



REV	DATE	DRAWN/CHKD	DESCRIPTION	PART NUMBER	OUTER PANEL THICKNESS		B	L	P	H1	H2
					MIN	MAX	±.005				
				56-271-1-EEE	.060	.125	.016	.070	.31	.57	.81
				56-271-2-EEE	.125	.185	.060	.130	.37	.51	.75

INCHES

ALL DIMENSIONS WITHOUT TOLERANCES ARE FOR REFERENCE ONLY.



THIRD ANGLE PROJECTION

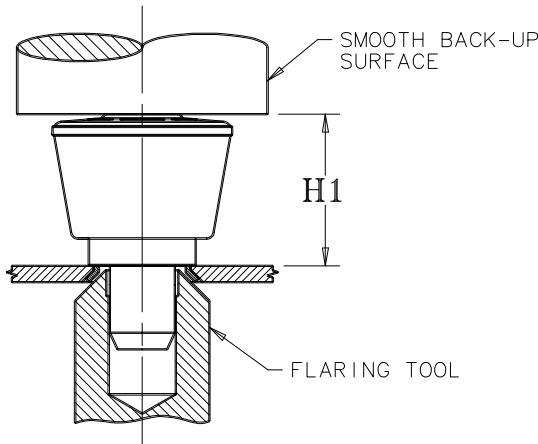
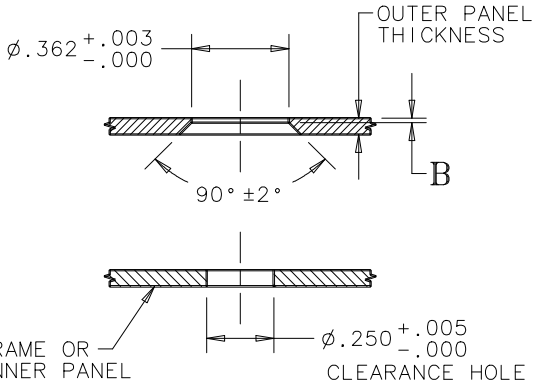
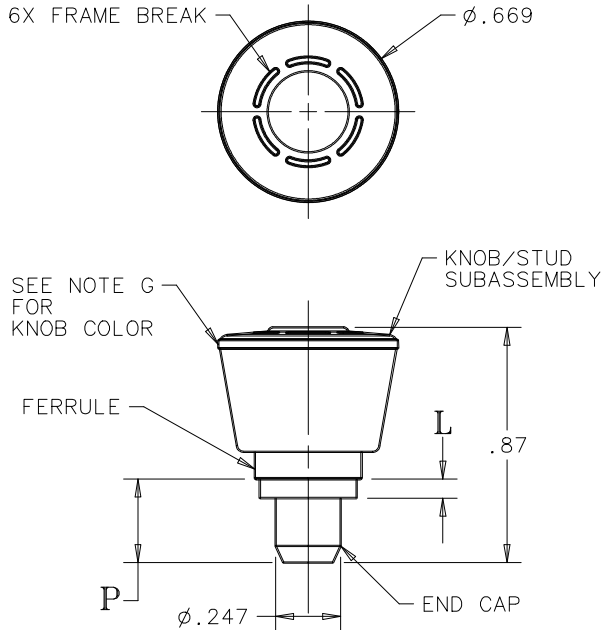


A PAPER SIZE

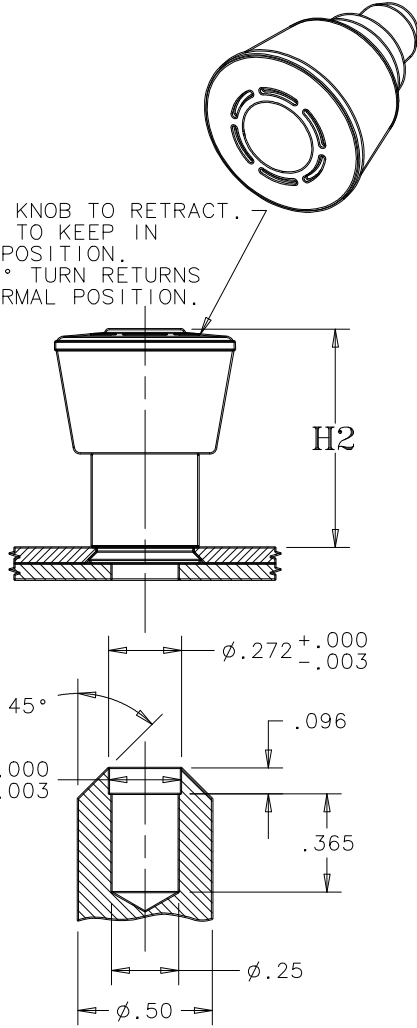
NOTES:

- A. INSTALLATION INSTRUCTIONS:
1. DRILL OR PUNCH INSTALLATION HOLE.
 2. PLACE FERRULE INTO INSTALLATION HOLE.
 3. PROVIDE SOLID BACK-UP BEHIND HOLE WITH CLEARANCE HOLE FOR END CAP.
 4. PRESS ON HEAD OF KNOB/STUD SUBASSEMBLY UNTIL SHOULDER OF FERRULE IS FIRMLY AGAINST OUTER PANEL.
 5. PUNCH CANNOT TOUCH PLASTIC DURING INSTALLATION.
- B. MATERIAL AND FINISH:
- KNOB - PC/ABS, BLACK
 - STUD - HARDENED STEEL, ZINC PLATE PLUS SEALER
 - FERRULE - ALUMINUM, NATURAL
 - ENDCAP - STEEL, ZINC PLATE PLUS SEALER
 - SPRING - STAINLESS STEEL, PASSIVATED
- C. GATE NOT ORIENTED WITH FRAME BREAK.
- D. FLASH HEIGHT GREATER THAN .012 NOT ACCEPTABLE.
- E. SURFACE IMPERFECTIONS: INSPECT PARTS FROM 2 FEET FOR 3 SECONDS. FOUR SURFACE IMPERFECTIONS MAX PER PART ALLOWED. SURFACE IMPERFECTIONS TO BE NO LARGER THAN .090 IN DIAMETER, HEIGHT, OR WIDTH.
- F. PARTS SHIPPED BULK.
- G. PART NUMBER SUFFIX "EEE" = KNOB COLOR
-000 = BLACK
(FOR ADDITIONAL COLORS SEE J-47-0-3)

PULL UP ON KNOB TO RETRACT.
ROTATE 90° TO KEEP IN
RETRACTED POSITION.
ANOTHER 90° TURN RETURNS
STUD TO NORMAL POSITION.



PART NUMBER: 56-271-1-EEE SHOWN



FLARING TOOL DETAIL