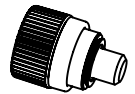


REVISION HISTORY			
REV	DATE	BY	DESCRIPTION
C	03NOV2015	MAL/JQ	PRN: P2015-2208

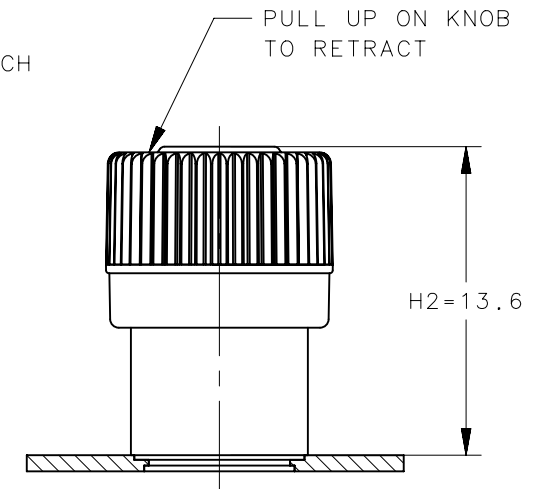
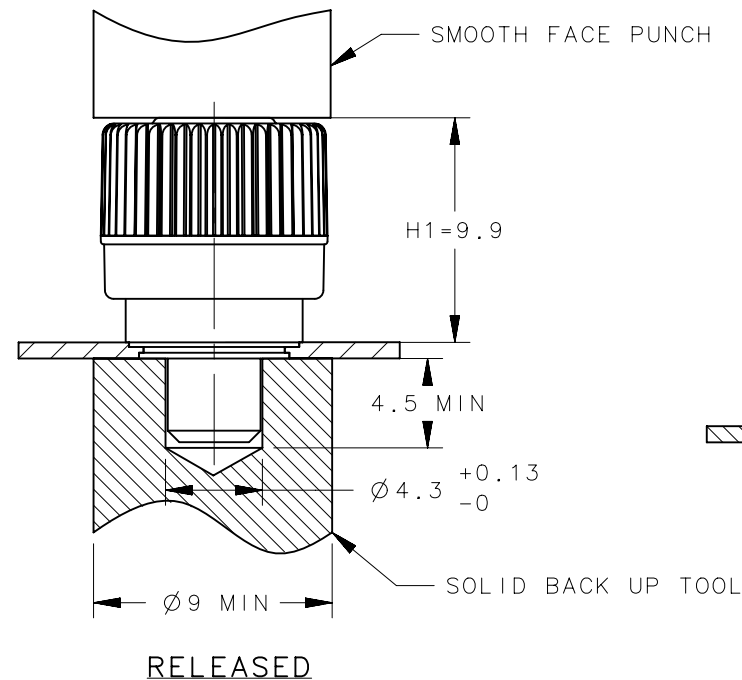
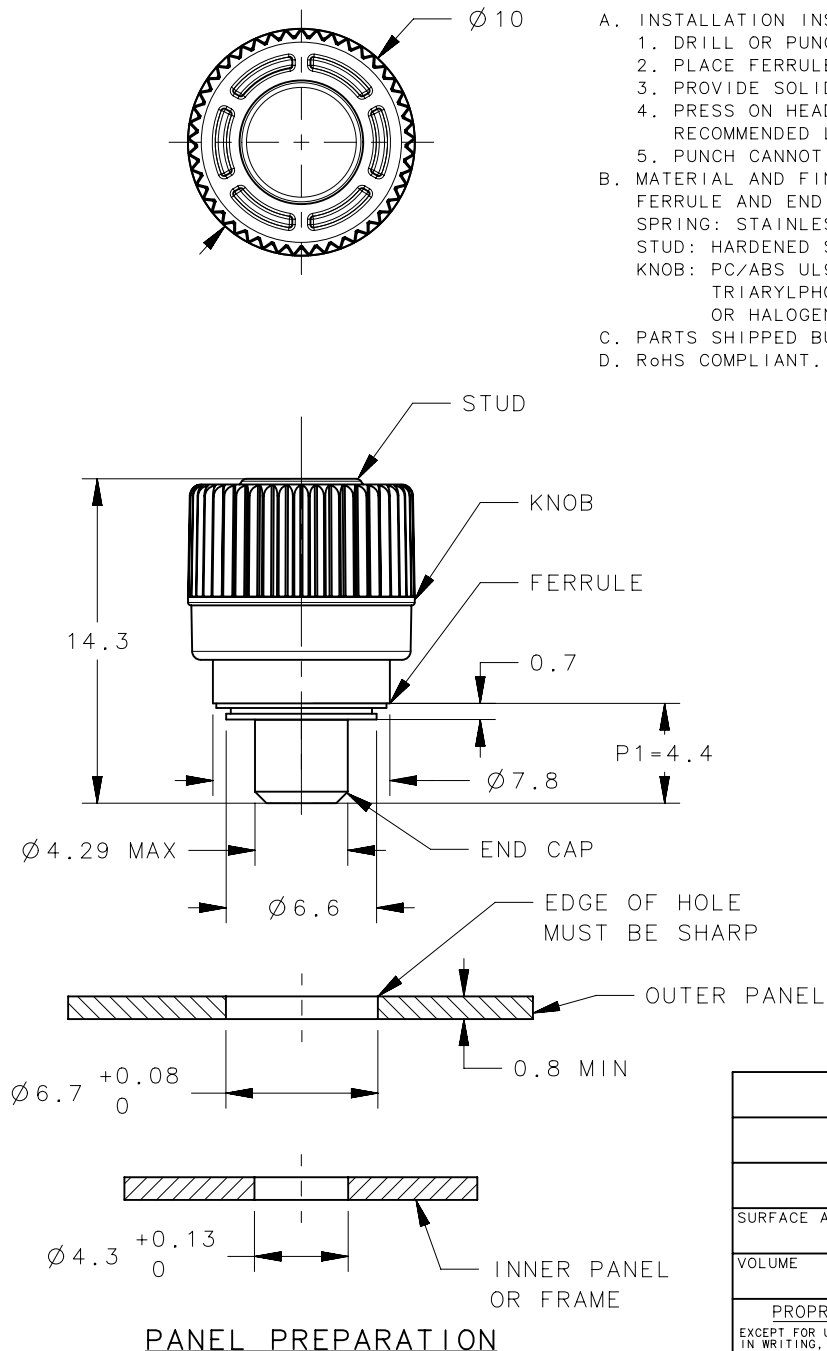
# NOTES:

- INSTALLATION INSTRUCTIONS:
  - DRILL OR PUNCH INSTALLATION HOLE.
  - PLACE FERRULE INTO INSTALLATION HOLE.
  - PROVIDE SOLID BACK-UP BEHIND HOLE WITH CLEARANCE HOLE FOR STUD.
  - PRESS ON HEAD OF STUD UNTIL SHOULDER OF FERRULE IS FIRMLY AGAINST OUTER PANEL.  
RECOMMENDED LOAD OF 8,000 N FOR STEEL,  $R_b < 60$ . RECOMMENDED LOAD OF 5,000 N FOR 5052-H32 ALUMINUM.
  - PUNCH CANNOT TOUCH PLASTIC DURING INSTALLATION.
- MATERIAL AND FINISH:
 

FERRULE AND END CAP: STEEL, ZINC PLATE PLUS SEALER.  
 SPRING: STAINLESS STEEL, PASSIVATED (NOT SHOWN)  
 STUD: HARDENED STEEL, ZINC PLATE PLUS SEALER.  
 KNOB: PC/ABS UL94 V0 RATED, FLAME RETARDANT;  
 TRIARYLPHOSPHATE (DOES NOT CONTAIN BROMINATED, CHLORINATED,  
 OR HALOGENATED ADDITIVES).
- PARTS SHIPPED BULK.
- RoHS COMPLIANT.



SCALE 1:1



## RETRACTED

"EEE" KNOB COLOR  
 -000 BLACK  
 SEE J-47-0-3 FOR  
 DETAILS

56-310-EEE  
 PART NUMBER

THIRD ANGLE PROJECTION	MILLIMETERS [IN]		DESCRIPTION	
SURFACE AREA	TOLERANCES UNLESS OTHERWISE NOTED		56 MINI PLUNGER	
VOLUME	ALL DIMENSIONS WITHOUT TOLERANCES ARE FOR REFERENCE ONLY.		PRESS-IN, 4C KNOB OVERMOLD, NON STAY OPEN	
PROPRIETARY ITEM	SIZE	SYSTEM	DWG NO.	
EXCEPT FOR USES EXPRESSLY GRANTED IN WRITING, INFORMATION DISCLOSED HEREON IS CONFIDENTIAL AND ALL RIGHTS, PATENT AND OTHERWISE, ARE RESERVED BY SOUTHCO, INC.	A4	NX	J-56-310-EEE	
PER ASME Y14.5M-1994	DRAWN BY	DATE	SCALE	SHEET
	MAL/JQ	06JUL2015	3:1	1 OF 1

**southco®**  
 CONNECT • CREATE • INNOVATE