

REVISION HISTORY

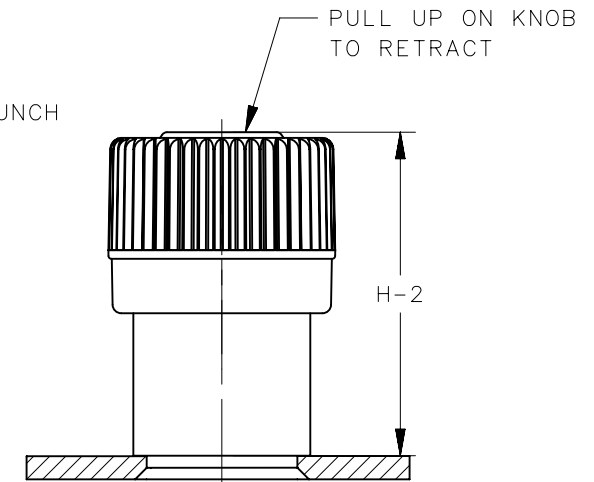
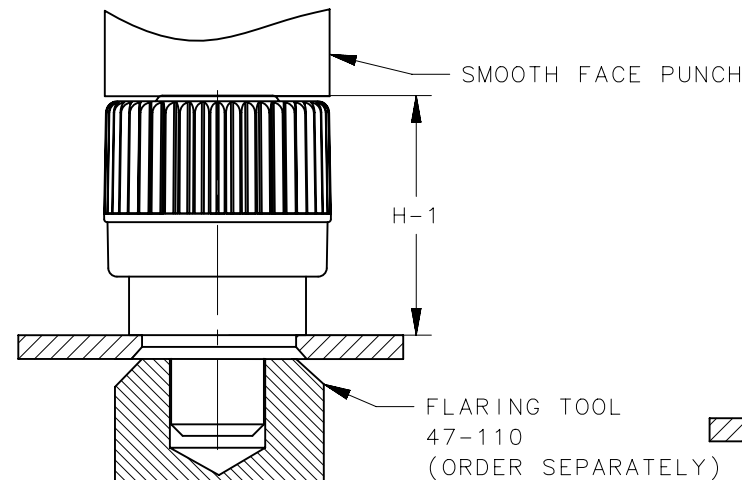
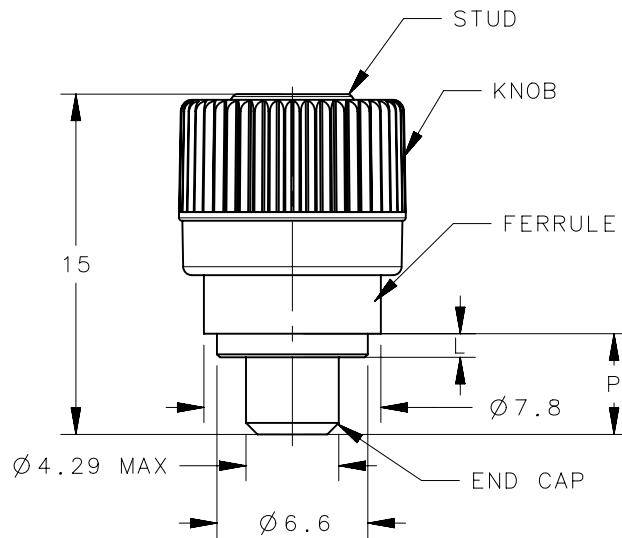
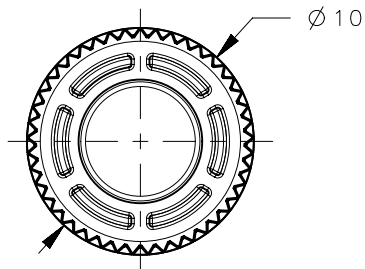
| REV | DATE | BY | DESCRIPTION |
|-----|-----------|--------|-----------------|
| B | 03NOV2015 | MAL/JQ | PRN: P2015-2208 |

NOTES:

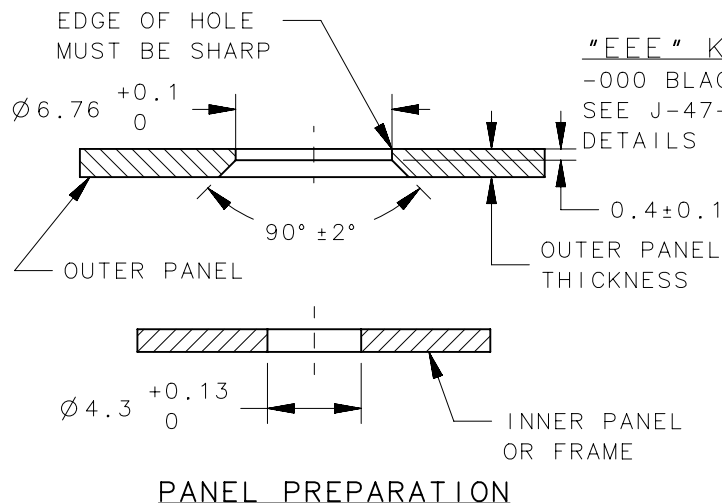
- A. INSTALLATION INSTRUCTIONS:
 1. DRILL OR PUNCH INSTALLATION HOLE.
 2. PLACE FERRULE INTO INSTALLATION HOLE.
 3. PROVIDE SOLID BACK-UP BEHIND HEAD
 4. PRESS ON HEAD OF STUD UNTIL SHOULDER OF FERRULE IS FIRMLY AGAINST OUTER PANEL.
 AND FLARE WITH 47-110. RECOMMENDED INSTALLATION LOAD OF 2,000 N.
 5. PUNCH CANNOT TOUCH PLASTIC DURING INSTALLATION.
- B. MATERIAL AND FINISH:
 END CAP: STEEL, ZINC PLATE PLUS SEALER.
 FERRULE: ALUMINUM, NATURAL
 SPRING: STAINLESS STEEL, PASSIVATED (NOT SHOWN)
 STUD: HARDENED STEEL, ZINC PLATE PLUS SEALER.
 KNOB: PC/ABS UL94 V0 RATED, FLAME RETARDANT;
 TRIARYLPHOSPHATE (DOES NOT CONTAIN BROMINATED, CHLORINATED,
 OR HALOGENATED ADDITIVES).
- C. PARTS SHIPPED BULK.
 D. RoHS COMPLIANT.



SCALE 1:1



RETRACTED



"EEE" KNOB COLOR
 -000 BLACK
 SEE J-47-0-3 FOR
 DETAILS

RELEASED

| | | | | | | |
|--------------|-----------------|-----------------|-----|-----|------|------|
| 56-320-2-EEE | 1.5 | 2.3 | 5.2 | 1.8 | 9.8 | 13.5 |
| 56-320-1-EEE | 0.8 | 1.5 | 4.4 | 1.0 | 10.6 | 14.3 |
| PART NUMBER | OUTER PANEL MIN | OUTER PANEL MAX | P | L | H-1 | H-2 |

| | | | | | | | | |
|--|--|---|-----------|--|--------|--|--|--|
| THIRD ANGLE PROJECTION | | | | | | | southco [®] CONNECT • CREATE • INNOVATE | |
| MILLIMETERS [IN] | | | | | | | | |
| SURFACE AREA | | TOLERANCES UNLESS OTHERWISE NOTED | | DESCRIPTION | | | | |
| VOLUME | | ALL DIMENSIONS WITHOUT TOLERANCES ARE FOR REFERENCE ONLY. | | 56 MINI PLUNGER FLARE-IN, 4C KNOB OVERMOLD, NON STAY OPEN | | | | |
| PROPRIETARY ITEM | | SIZE | SYSTEM | DWG NO. | | | | |
| EXCEPT FOR USES EXPRESSLY GRANTED IN WRITING, INFORMATION DISCLOSED HEREON IS CONFIDENTIAL AND ALL RIGHTS, PATENT AND OTHERWISE, ARE RESERVED BY SOUTHCO, INC. | | A4 | NX | J-56-320-EEE | | | | |
| PER ASME Y14.5M-1994 | | DRAWN BY | DATE | SCALE | SHEET | | | |
| | | MAL/JQ | 06JUL2015 | 3:1 | 1 OF 1 | | | |