



PROPRIETARY ITEM - EXCEPT FOR USES EXPRESSLY GRANTED IN WRITING INFORMATION DISCLOSED HEREON IS CONFIDENTIAL AND ALL RIGHTS PATENT AND OTHERWISE ARE RESERVED BY SOUTHCO, INC.

No. 56 SPRING LOADED PLUNGER ASSEMBLY, FLARE-IN STYLE, WITH SMALL OVERMOLDED KNOB AND WITHOUT STAY-OPEN FEATURE

DATE	DRAWN	CHKD	SCALE	DRAWING NUMBER
28FEB2003	DLH	VNI	2:1	J-56-170

REV	DATE	DRAWN/CHKD	DESCRIPTION

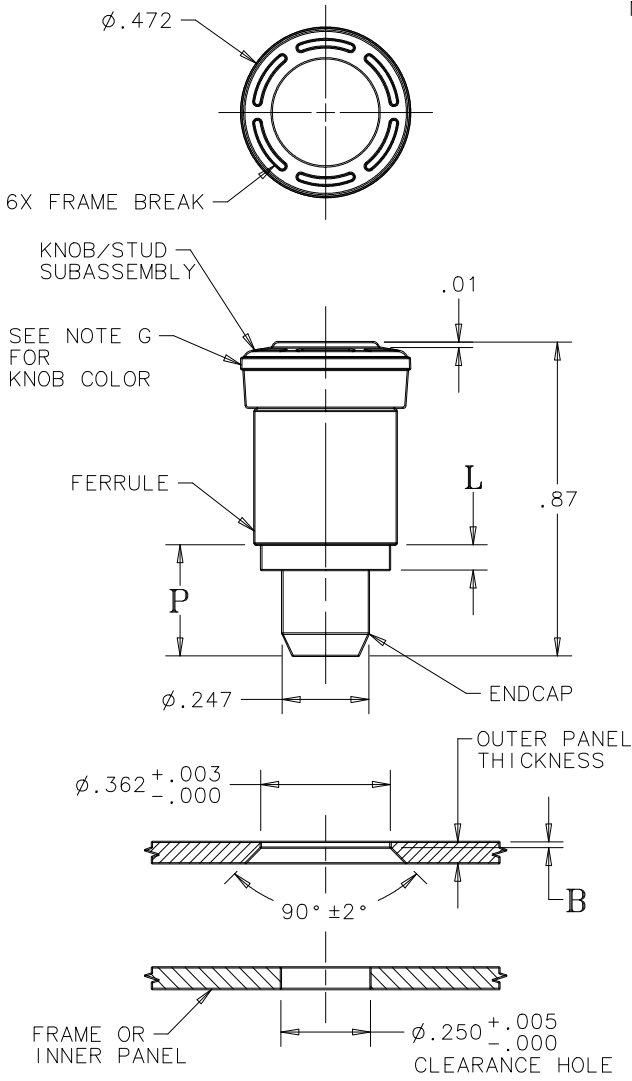
PART NUMBER	OUTER PANEL THICKNESS		B	L	P	H1	H2
	MIN	MAX	±.005				
56-170-1-EEE	.060	.125	.016	.070	.31	.57	.81
56-170-2-EEE	.125	.185	.060	.130	.37	.51	.75

INCHES

ALL DIMENSIONS WITHOUT TOLERANCES ARE FOR REFERENCE ONLY.

THIRD ANGLE PROJECTION

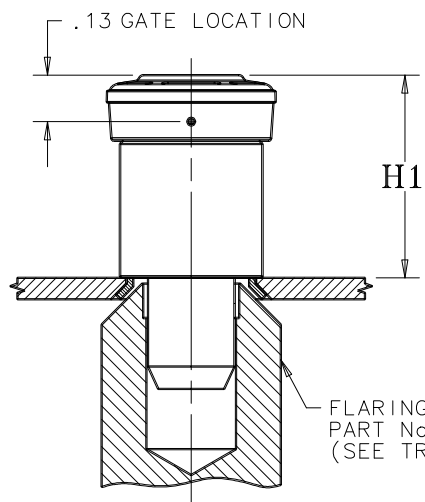
A PAPER SIZE



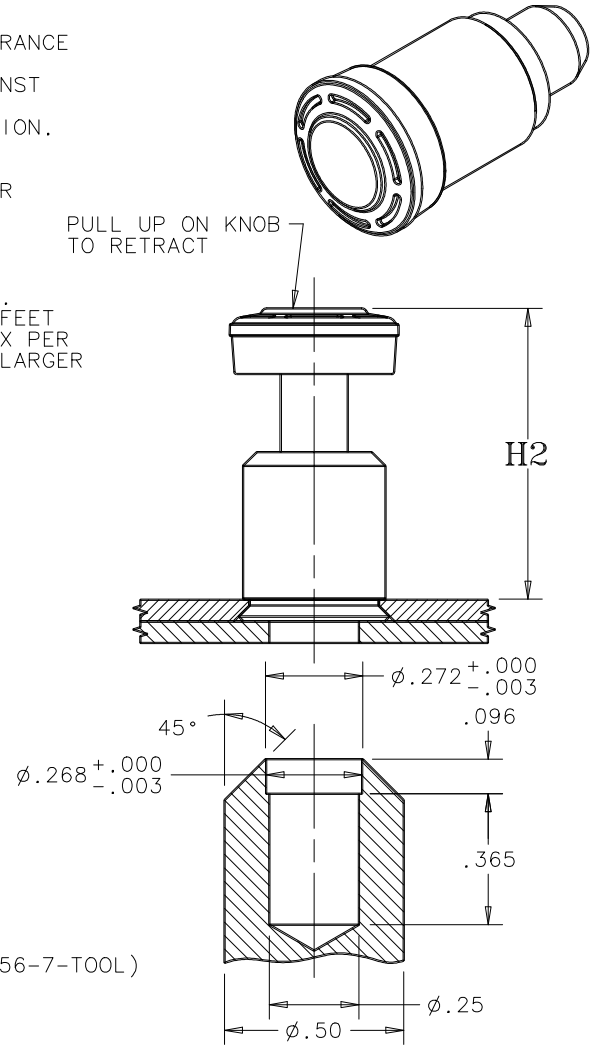
PANEL PREPARATION

NOTES:

- A. INSTALLATION INSTRUCTIONS:
 1. DRILL OR PUNCH INSTALLATION HOLE.
 2. PLACE FERRULE INTO INSTALLATION HOLE.
 3. PROVIDE SOLID BACK-UP BEHIND HOLE WITH CLEARANCE HOLE FOR ENDCAP.
 4. FLARE FERRULE UNTIL SHOULDER IS FIRMLY AGAINST OUTER PANEL.
 5. PUNCH CANNOT TOUCH PLASTIC DURING INSTALLATION.
- B. MATERIAL AND FINISH:
 - KNOB - PC/ABS, BLACK
 - STUD - HARDENED STEEL, ZINC PLATE PLUS SEALER
 - FERRULE - ALUMINUM, NATURAL
 - ENDCAP - STEEL, ZINC PLATE PLUS SEALER
 - SPRING - STAINLESS STEEL, PASSIVATED
- C. GATE NOT ORIENTED WITH FRAME BREAK.
- D. FLASH HEIGHT GREATER THAN .012 NOT ACCEPTABLE.
- E. SURFACE IMPERFECTIONS: INSPECT PARTS FROM 2 FEET FOR 3 SECONDS. FOUR SURFACE IMPERFECTIONS MAX PER PART ALLOWED. SURFACE IMPERFECTIONS TO BE NO LARGER THAN .090 IN DIAMETER, HEIGHT, OR WIDTH.
- F. PARTS SHIPPED BULK.
- G. PART NUMBER SUFFIX "EEE" = KNOB COLOR
 -000 = BLACK
 (FOR ADDITIONAL COLORS SEE J-47-0-3)



PART NUMBER: 56-170-1-EEE SHOWN



FLARING TOOL DETAIL