

NOTES:

A. INSTALLATION INSTRUCTIONS:

1. DRILL OR PUNCH INSTALLATION HOLE.
2. PLACE FERRULE INTO INSTALLATION HOLE.
3. PROVIDE SOLID BACK-UP BEHIND HEAD
4. PRESS ON HEAD OF STUD UNTIL SHOULDER OF FERRULE IS FIRMLY AGAINST OUTER PANEL AND FLARE WITH 47-110. RECOMMENDED INSTALLATION LOAD OF 2000 N.
5. PUNCH CANNOT TOUCH PLASTIC DURING INSTALLATION.

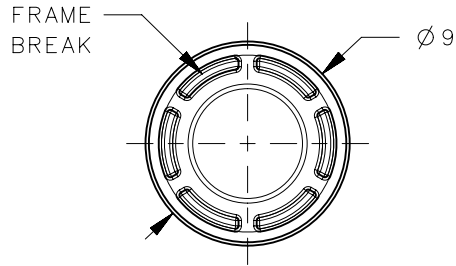
B. MATERIAL AND FINISH:

ENDCAP: STEEL, ZINC PLATE PLUS SEALER
 FERRULE: ALUMINUM, NATURAL
 SPRING: STAINLESS STEEL, PASSIVATED (NOT SHOWN)
 STUD: HARDENED STEEL, ZINC PLATE PLUS SEALER
 KNOB: PC/ABS UL94 VO RATED, FLAME RETARDANT;
 TRIARYLPHOSPHATE (DOES NOT CONTAIN BROMINATED,
 CHLORINATED, OR HALOGENATED ADDITIVES).

C. GATE NOT ORIENTED WITH FRAME BREAK.

D. COSMETIC SPECIFICATION: ALL SURFACES (UNLESS OTHERWISE SPECIFIED) ARE TO BE PER SOUTHCO SPECIFICATION S-121-02 AND S-121-04, CLASS B (REFER TO SECTION 1.0 FOR CROSS REFERENCE TABLE)

E. PARTS SHIPPED BULK



REVISION HISTORY			
REV	DATE	BY	DESCRIPTION
B	09JUL2014	TVA/MJS	PRN: P2014-1050

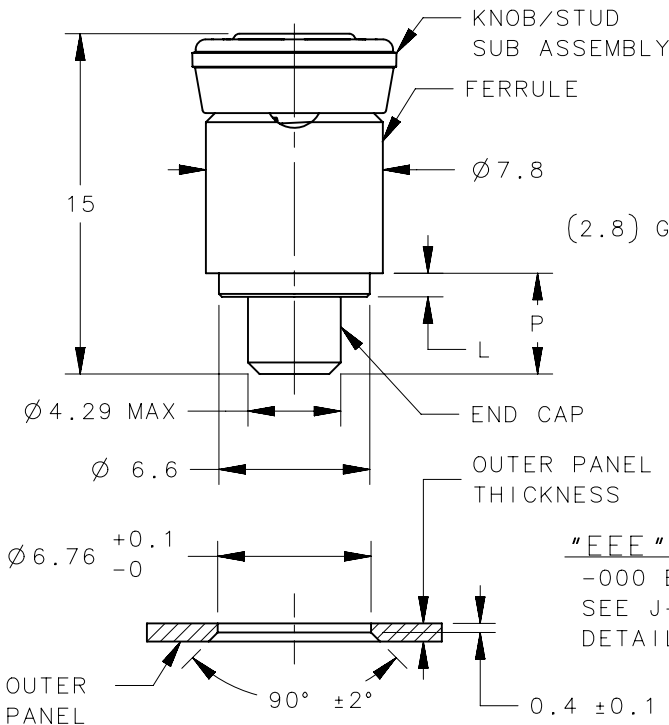


SCALE 1:1

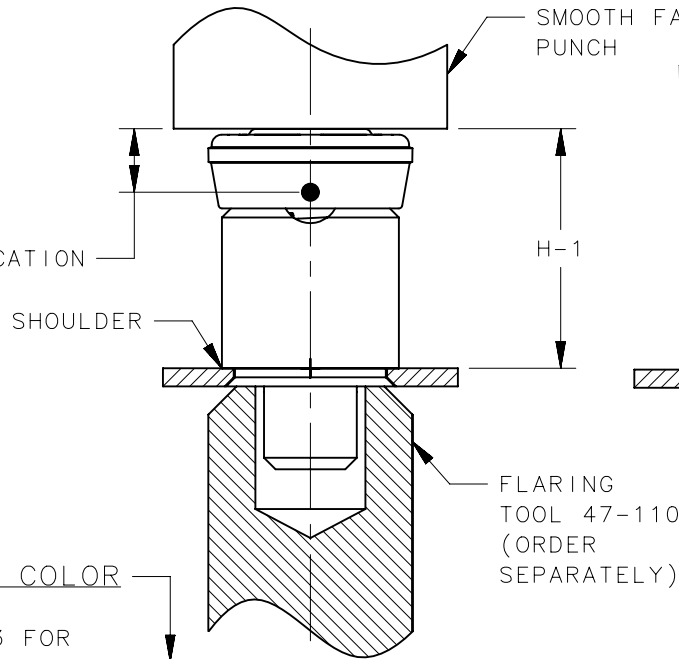


SCALE 1:1

PULL UP ON KNOB TO RETRACT. ROTATE 90° TO KEEP IN RETRACTED POSITION. ANOTHER 90° TURN RETURNS STUD TO NORMAL POSITION.

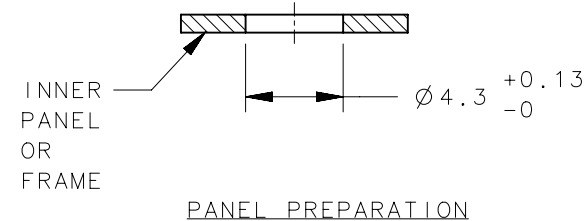


"EEE" KNOB COLOR
 -000 BLACK
 SEE J-47-0-3 FOR
 DETAILS



PART NUMBER 56-121-1-EEE SHOWN

56-121-2-EEE	1.5	2.3	5.2	1.8	9.8	13.5
56-121-1-EEE	0.8	1.5	4.4	1.0	10.6	14.3
PART NUMBER	OUTER PANEL MIN	OUTER PANEL MAX	P	L	H-1	H-2



PANEL PREPARATION

THIRD ANGLE PROJECTION	
MILLIMETERS [IN]	
TOLERANCES UNLESS OTHERWISE NOTED	
ALL DIMENSIONS WITHOUT TOLERANCES ARE FOR REFERENCE ONLY.	
PROPRIETARY ITEM	
EXCEPT FOR USES EXPRESSLY GRANTED IN WRITING, INFORMATION DISCLOSED HEREON IS CONFIDENTIAL AND ALL RIGHTS, PATENT AND OTHERWISE, ARE RESERVED BY SOUTHCO, INC.	
PER ASME Y14.5M-1994	

southco [®]			
CONNECT • CREATE • INNOVATE			
DESCRIPTION			
Quick Access Fastener			
56 MINI FLARE-IN ASSEMBLY OVERMOLD STAY OPEN			
SIZE	SYSTEM	DWG NO.	
A4	NX	J-56-121	
DRAWN BY	DATE	SCALE	SHEET
TVA	07OCT2013	3:1	1 OF 1