

PANEL PREPARATION

NOTES:

A. INSTALLATION INSTRUCTIONS:

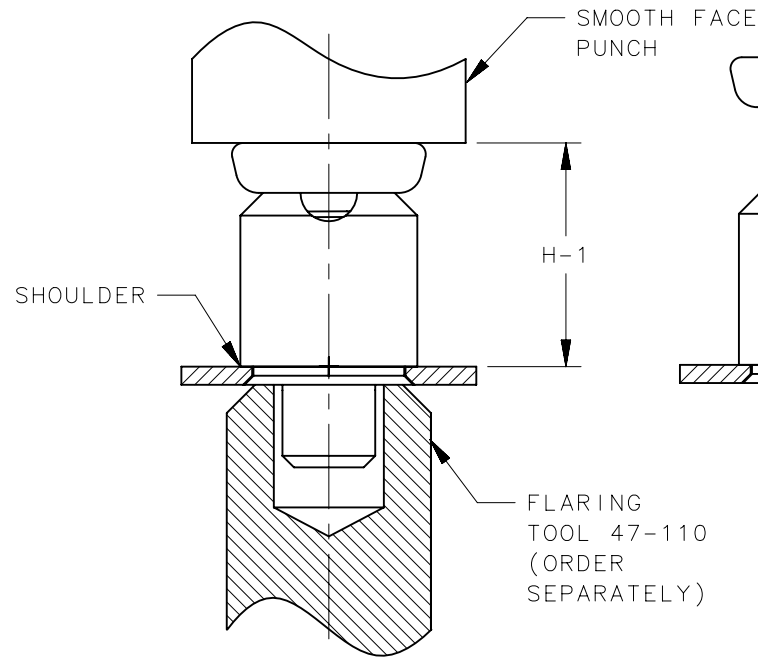
1. DRILL OR PUNCH INSTALLATION HOLE.
2. PLACE FERRULE INTO INSTALLATION HOLE.
3. PROVIDE SOLID BACK-UP BEHIND HEAD
4. PRESS ON HEAD OF STUD UNTIL SHOULDER OF FERRULE IS FIRMLY AGAINST OUTER PANEL AND FLARE WITH 47-110. RECOMMENDED INSTALLATION LOAD OF 2,000 N

B. MATERIAL AND FINISH:

ENDCAP: STEEL, ZINC PLATE PLUS SEALER
FERRULE: ALUMINUM, NATURAL
SPRING: STAINLESS STEEL, PASSIVATED (NOT SHOWN)
STUD: HARDENED STEEL, ZINC PLATE PLUS SEALER

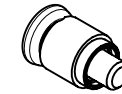
C. COSMETIC SPECIFICATION: ALL SURFACES (UNLESS OTHERWISE SPECIFIED) ARE TO BE PER SOUTHCO SPECIFICATION S-121-02, CLASS B (REFER TO SECTION 1.0 FOR CROSS REFERENCE TABLE)

D. PARTS SHIPPED BULK



REVISION HISTORY

REV	DATE	BY	DESCRIPTION
B	09JUL2014	TVA/MJS	PRN: P2014-1050



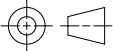
SCALE 1:1



SCALE 1:1

PULL UP ON STUD TO RETRACT. ROTATE 90° TO KEEP IN RETRACTED POSITION. ANOTHER 90° TURN RETURNS STUD TO NORMAL POSITION.

PART NUMBER 56-21-1-15 SHOWN

56-21-2-15	1.5	2.3	5.2	1.8	9.1	12.8
56-21-1-15	0.8	1.5	4.4	1.0	9.9	13.6
PART NUMBER	OUTER PANEL MIN	OUTER PANEL MAX	P	L	H-1	H-2
	THIRD ANGLE PROJECTION	 <div>southco[®] CONNECT • CREATE • INNOVATE</div>				
	MILLIMETERS [IN]					
	TOLERANCES UNLESS OTHERWISE NOTED	DESCRIPTION				
	ALL DIMENSIONS WITHOUT TOLERANCES ARE FOR REFERENCE ONLY.	Quick Access Fastener				
		56 MINI FLARE-IN ASSEMBLY STAY OPEN				
PROPRIETARY ITEM		SIZE	SYSTEM	DWG NO.		
EXCEPT FOR USES EXPRESSLY GRANTED IN WRITING, INFORMATION DISCLOSED HEREON IS CONFIDENTIAL AND ALL RIGHTS, PATENT AND OTHERWISE ARE RESERVED BY SOUTHCO, INC.		A4	NX	J-56-21		
	PER ASME Y14.5M-1994	DRAWN BY	TVA	DATE	12SEP2013	SCALE
						3 : 1
						SHEET 1 OF 1