

DRAWING NUMBER  
**J - 53 - 10 - 26**

SCALE  
**N.T.S.**

CHKD  
**SJM**

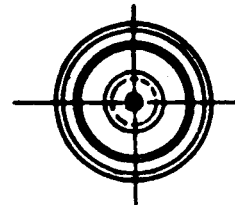
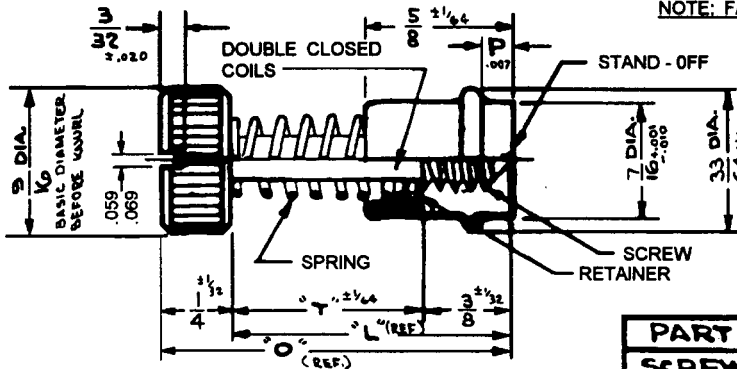
DRAWN  
**KLH**

DATE  
**4-11-80**

SOUTHCO No 53 FASTENER ASSEMBLIES  
1/4 - 20 & 1/4 - 28 THREADS 9/16 DIA. HEAD

DRAWING NUMBER  
**J - 53 - 10 - 26**

NOTE: FASTENER SHIPPED UNASSEMBLED



PART	MATERIAL	FINISH
SCREW	STAINLESS STEEL	BLACK ORGANIC COATING
STAND-OFF	STAINLESS STEEL	BLACK ORGANIC COATING
RETAINER	STAINLESS STEEL	PASSIVATE
SPRING	STAINLESS STEEL	PASSIVATE

PROPRIETARY ITEM - EXCEPT FOR USES EXPRESSLY GRANTED IN WRITING, INFORMATION DISCLOSED HEREON IS CONFIDENTIAL AND ALL RIGHTS, PATENT AND OTHERWISE, ARE RESERVED BY SOUTHCO, INC.

REV. B 5MAR93 JRR PRN: S-1-03  
REV. A JGK 4-13-82 PRN: S-1-01

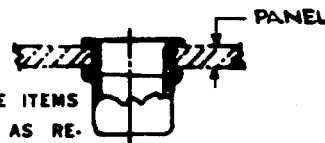
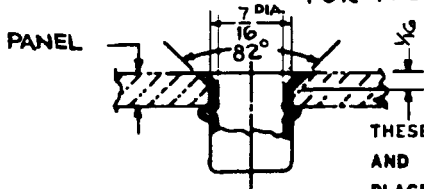
**ASSEMBLY PART NUMBERS**

SLOTTED		UNSLOTTED		T	L	O	P
1/4 20 UNC - 2A	1/4 28 UNF - 2A	1/4 - 20 UNC - 2A	1/4 - 28 UNF - 2A				
53-11-410-26	53-14-410-26	53-21-410-26	53-24-410-26	11/16	1/2	1/4	1/8
53-11-510-26	53-14-510-26	53-21-510-26	53-24-510-26	11/16	1/2	1/4	3/16
53-11-610-26	53-14-610-26	53-21-610-26	53-24-610-26	11/16	1/2	1/4	1/4
53-11-411-26	53-14-411-26	53-21-411-26	53-24-411-26	11/16	1/2	1/4	1/8
53-11-511-26	53-14-511-26	53-21-511-26	53-24-511-26	11/16	1/2	1/4	3/16
53-11-611-26	53-14-611-26	53-21-611-26	53-24-611-26	11/16	1/2	1/4	1/4
53-11-412-26	53-14-412-26	53-21-412-26	53-24-412-26	3/4	1/2	1/4	1/8
53-11-512-26	53-14-512-26	53-21-512-26	53-24-512-26	3/4	1/2	1/4	3/16
53-11-612-26	53-14-612-26	53-21-612-26	53-24-612-26	3/4	1/2	1/4	1/4
53-11-413-26	53-14-413-26	53-21-413-26	53-24-413-26	13/16	3/8	7/16	1/8
53-11-513-26	53-14-513-26	53-21-513-26	53-24-513-26	13/16	3/8	7/16	3/16
53-11-613-26	53-14-613-26	53-21-613-26	53-24-613-26	13/16	3/8	7/16	1/4
53-11-414-26	53-14-414-26	53-21-414-26	53-24-414-26	7/8	1/2	1/2	1/8
53-11-514-26	53-14-514-26	53-21-514-26	53-24-514-26	7/8	1/2	1/2	3/16
53-11-614-26	53-14-614-26	53-21-614-26	53-24-614-26	7/8	1/2	1/2	1/4
53-11-415-26	53-14-415-26	53-21-415-26	53-24-415-26	15/16	5/8	9/16	1/8
53-11-515-26	53-14-515-26	53-21-515-26	53-24-515-26	15/16	5/8	9/16	3/16
53-11-615-26	53-14-615-26	53-21-615-26	53-24-615-26	15/16	5/8	9/16	1/4
53-11-416-26	53-14-416-26	53-21-416-26	53-24-416-26	1 1/8	3/4	5/8	1/8
53-11-516-26	53-14-516-26	53-21-516-26	53-24-516-26	1 1/8	3/4	5/8	3/16
53-11-616-26	53-14-616-26	53-21-616-26	53-24-616-26	1 1/8	3/4	5/8	1/4

**INSTALLATION METHOD "A"**

**INSTALLATION METHOD "B"**

FOR FASTENER INSTALLATION SEE DWG. J-53-1



THESE ASSEMBLIES ARE NON-REPAIRABLE ITEMS AND COMPONENTS ARE NOT AVAILABLE AS REPLACEMENT OR REPAIR PARTS.

WHEN DIMENSION "P" IS:	PANEL RANGE IS:	
	METHOD "A"	METHOD "B"
1/8	7/64 TO 9/64	1/16 TO 5/64
3/16	11/64 TO 13/64	3/32 TO 9/64
1/4	15/64 TO 17/64	5/32 TO 13/64



U.S. DATE	APR			
1	2	3	4	5