

DRAWING NUMBER
J-53-26-26

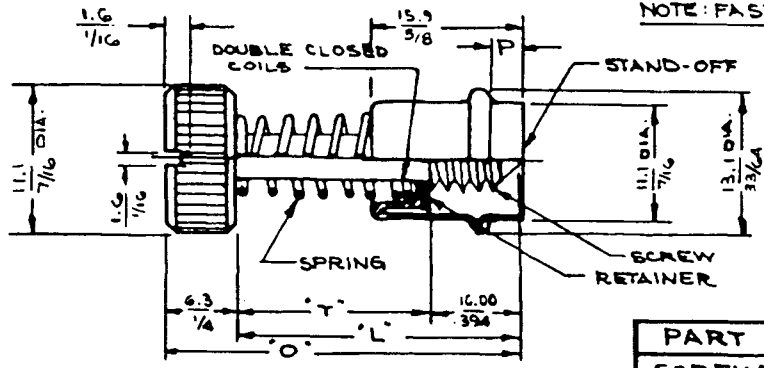
SCALE
N.T.S.

CHKD

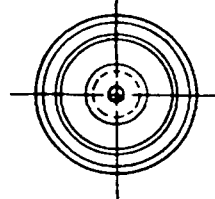
DRAWN
[Signature]

DATE
10-18-88

SOUTHCO N° 53 FASTENER ASSEMBLIES
M5x0.8 THREAD 7/16 DR. HEAD (BLACK)



NOTE: FASTENER SHIPPED UNASSEMBLED



DRAWING NUMBER
J-53-26-26

PROPRIETARY ITEM—EXCEPT FOR USES EXPRESSLY GRANTED IN WRITING, INFORMATION DISCLOSED HEREON IS CONFIDENTIAL AND ALL RIGHTS, PATENT AND OTHERWISE, ARE RESERVED BY SOUTHCO, INC.

PART	MATERIAL	FINISH
SCREW	STAINLESS STEEL	BLACK ORGANIC COATING
STAND-OFF	STAINLESS STEEL	BLACK ORGANIC COATING
RETAINER	STAINLESS STEEL	PASSIVATE
SPRING	STAINLESS STEEL	PASSIVATE

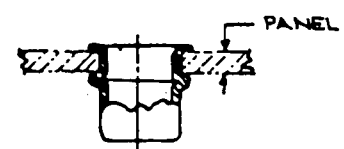
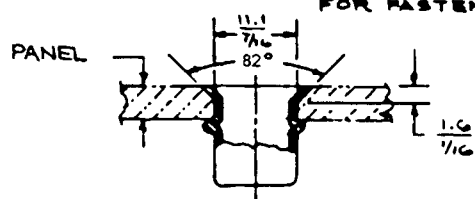
MILLIMETER/INCH
MILLIMETER
INCH

ASSEMBLY PART NUMBERS		T	L	O	P
SLOTTED	UNSLOTTED				
M5x0.8	M5x0.8				
53-76-714-26	53-86-714-26				
814	814	14.00	24.00	30.35	3.2/1/8
914	914	.552	.945	1.195	4.8/3/16
716	716				6.3/1/4
816	816	16.00	26.00	32.35	3.2/1/8
916	916	.630	1.024	1.274	4.8/3/16
718	718				6.3/1/4
818	818	18.00	28.00	34.35	3.2/1/8
918	918	.709	1.102	1.352	4.8/3/16
720	720				6.3/1/4
820	820	20.00	30.00	36.35	3.2/1/8
920	920	.787	1.181	1.431	4.8/3/16
722	722				6.3/1/4
822	822	22.00	32.00	38.35	3.2/1/8
922	922	.864	1.260	1.510	4.8/3/16
724	724				6.3/1/4
824	824	24.00	34.00	40.35	3.2/1/8
924	924	.945	1.339	1.589	4.8/3/16
726	726				6.3/1/4
826	826	26.00	36.00	42.35	3.2/1/8
926	926	1.024	1.417	1.667	4.8/3/16
53-76-926-26	53-86-926-26				

INSTALLATION METHOD "A"

INSTALLATION METHOD "B"

FOR FASTENER INSTALLATION SEE DWG. J-53-1



WHEN DIMENSION "P" IS:	PANEL RANGE IS:	
	METHOD "A"	METHOD "B"
3.2/1/8	2.8 - 3.6 7/64 - 9/64	1.6 - 2.0 1/16 - 3/64
4.8/3/16	4.4 - 5.2 11/64 - 13/64	2.4 - 3.0 3/32 - 5/64
6.3/1/4	5.9 - 6.7 15/64 - 17/64	3.0 - 3.6 5/32 - 3/16



REV A 5MAR83 JRR PRN: S-1-63