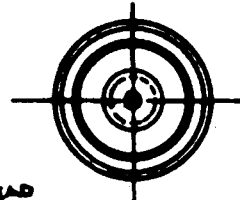
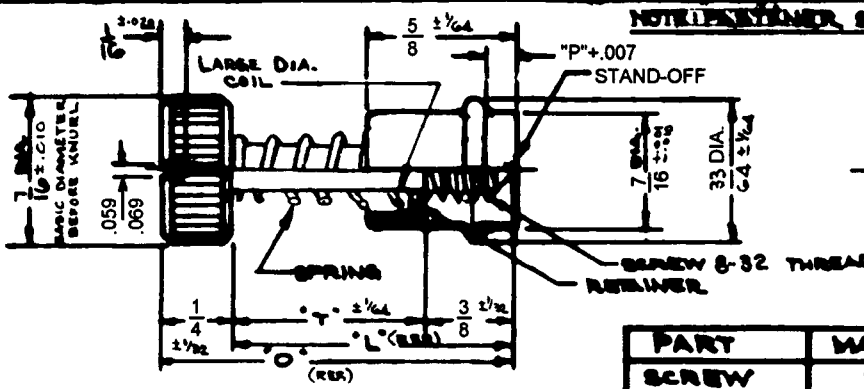


SOUTHCO NO 53 FASTENER ASSEMBLIES
 8-32 THREAD 7/16 DIA. HEAD
 DRAWING NUMBER J-53-7-26
 SCALE N.T.S.
 CHKD SFM
 DRAWN KLM
 DATE 4-11-80

DRAWING NUMBER J-53-7-26



PART	MATERIAL	FINISH
SCREW	STAINLESS STEEL	BLACK ORGANIC COATING
STAND-OFF	STAINLESS STEEL	BLACK ORGANIC COATING
RETAINER	STAINLESS STEEL	PASSIVATE
SPRING	STAINLESS STEEL	PASSIVATE

REV 3 5 MAR 93 TR PRN 5-1-03
 REV A 4-13-82 HSK PRN 5-1-81

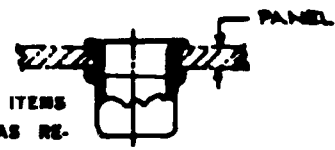
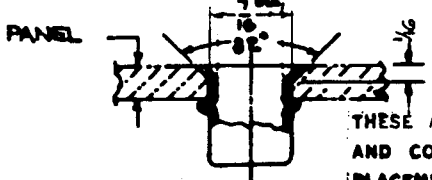
ASSEMBLY PART NUMBERS

SLOTTED		UNSLOTTED		T	L	O	P
8-32 UNC-2A		8-32 UNC-2A					
53-17-710-26		53-27-710-26		1/8			1/8
53-17-810-26		53-27-810-26		3/16	1/2	1/4	3/16
53-17-910-26		53-27-910-26		1/4			1/4
53-17-711-26		53-27-711-26		1/8			1/8
53-17-811-26		53-27-811-26		3/16	1/2	1/4	3/16
53-17-911-26		53-27-911-26		1/4			1/4
53-17-712-26		53-27-712-26		1/8			1/8
53-17-812-26		53-27-812-26		3/16	1/2	1/4	3/16
53-17-912-26		53-27-912-26		1/4			1/4
53-17-713-26		53-27-713-26		1/8			1/8
53-17-813-26		53-27-813-26		3/16	1/2	1/4	3/16
53-17-913-26		53-27-913-26		1/4			1/4
53-17-714-26		53-27-714-26		1/8			1/8
53-17-814-26		53-27-814-26		3/16	1/2	1/4	3/16
53-17-914-26		53-27-914-26		1/4			1/4
53-17-715-26		53-27-715-26		1/8			1/8
53-17-815-26		53-27-815-26		3/16	1/2	1/4	3/16
53-17-915-26		53-27-915-26		1/4			1/4
53-17-716-26		53-27-716-26		1/8			1/8
53-17-816-26		53-27-816-26		3/16	1/2	1/4	3/16
53-17-916-26		53-27-916-26		1/4			1/4

INSTALLATION METHOD 'A'

INSTALLATION METHOD 'B'

FOR FASTENER INSTALLATION SEE DWG. J-53-1



THESE ASSEMBLIES ARE NON-REPAIRABLE ITEMS AND COMPONENTS ARE NOT AVAILABLE AS REPLACEMENT OR REPAIR PARTS.

WHEN DIMENSION 'P' IS:	PANEL RANGE IS:	
	METHOD 'A'	METHOD 'B'
1/8	7/64 TO 9/64	1/16 TO 5/64
3/16	11/64 TO 13/64	3/32 TO 9/64
1/4	15/64 TO 17/64	5/32 TO 13/64

APP.	DATE	DATE	DATE