

"B" RECESS STYLES
 3 - No.2 PHILLIPS/SLOT
 4 - T15 TORX®/SLOT

"D" HEAD STYLES
 K - KNURLED
 N - SMOOTH

"P" PACKAGE
 R - REEL PACKAGE
 T - TRAY PACKAGE

REVISION HISTORY			
REV	DATE	BY	DESCRIPTION
D	25JUL2013	JQ/TVA	PRN: P2013-1517

P/N: 52-SM-3311-K SHOWN



SCALE 1:1

- NOTES:
- MATERIAL AND FINISH: RoHS COMPLIANT
 SCREW: STEEL, HARDENED, ZINC PLATE PLUS SEALER
 SPRING: 300 SERIES STAINLESS STEEL, PASSIVATED
 STANDOFF: STEEL, TIN PLATE
 PLUG: SILICONE RUBBER
 PATCH: POLYIMIDE
 - INSTALLATION INSTRUCTION:
 - PREPARE HOLE AND SOLDER PAD AS SHOWN. HOLE DIAMETER, INCLUDING TOLERANCE, IS FINAL SIZE.
 - PRINT THE PCB BOARD WITH SOLDER PASTE. THE SOLDER PASTE SHOULD COVER THE SOLDER PAD.
 - SMT MACHINE TO PICK AND PLACE THE WHOLE SCREW WITH PATCH AND PLUG INTO LOCATED PANEL HOLES.
 - THE PC BOARDS WILL CONTINUE THROUGH THE SET UP HEAT SOLDERING CHAMBER AND FINISH THE CYCLE. MAXIMUM TEMP 535°F (280°C).
 - THE PATCH AND PLUG ON SCREW WILL BE REMOVED AFTER SOLDERING DONE AND CANNOT BE REUSED.
 - TO REMOVE THE PLUG: PULL SCREW HEAD UP TO UNFASTENED POSITION, THEN THE PLUG CAN BE PULLED OFF EASILY.
 - TORX® IS REGISTERED TRADEMARK OF ACUMENT™ INTELLECTUAL PROPERTIES, LLC.
 - COSMETIC SPECIFICATION: ALL SURFACES (UNLESS OTHERWISE SPECIFIED) ARE TO BE PER SOUTHCO SPECIFICATION S-121-02, CLASS B, STANDOFF CLASS C (REFER TO SECTION 1.0 FOR CROSS REFERENCE TABLE).
 - SEE PAGE 2 FOR PACKAGE INFORMATION.

52-SM-3B21-D-P	2.3	6.8	1.6
52-SM-3B11-D-P	0.8	5.3	1.6
PART NUMBER	"P-1"	"P-2"	PANEL THICKNESS

THIRD ANGLE PROJECTION	
MILLIMETERS [IN]	
TOLERANCES UNLESS OTHERWISE NOTED	
ALL DIMENSIONS WITHOUT TOLERANCES ARE FOR REFERENCE ONLY.	
PROPRIETARY ITEM	
EXCEPT FOR USES EXPRESSLY GRANTED IN WRITING, INFORMATION DISCLOSED HEREON IS CONFIDENTIAL AND ALL RIGHTS, PATENT AND OTHERWISE, ARE RESERVED BY SOUTHCO, INC.	
PER ASME Y14.5M-1994	

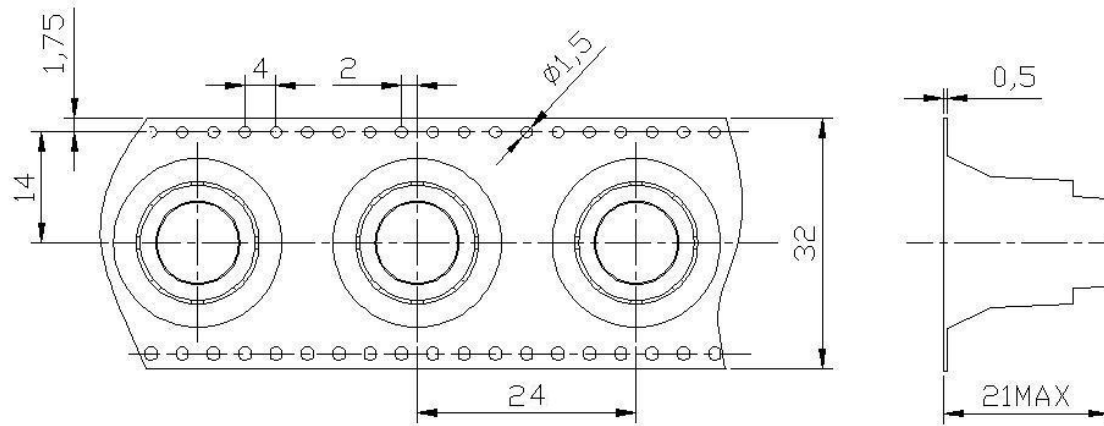
southco®
 CONNECT • CREATE • INNOVATE

DESCRIPTION: 52-SM CAPTIVE FASTENER ASSEMBLY M3 THREAD

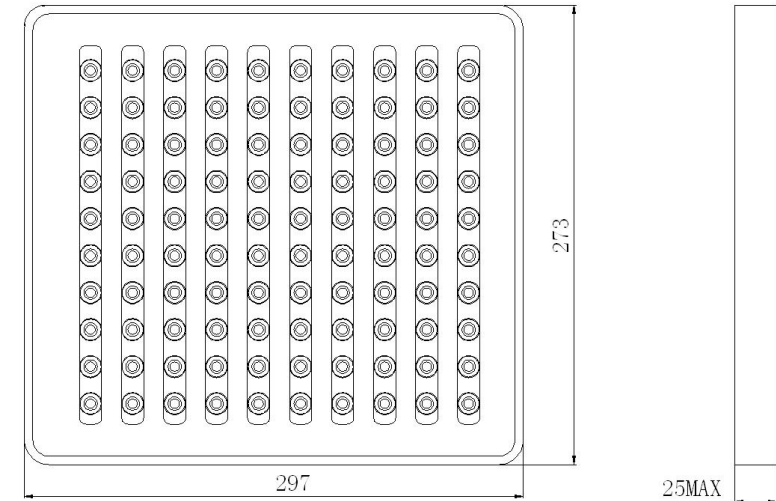
SIZE: A4	SYSTEM: NX	DWG NO.: J-52-SM-M3
DRAWN BY: JQ/TVA	DATE: 21MAR2012	SCALE: 2:1 SHEET: 1 OF 2

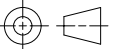

REVISION HISTORY			
REV	DATE	BY	DESCRIPTION
D	25JUL2013	JQ/TVA	PRN: P2013-1517

REEL PACKAGE: 13 INCH REEL PER EIA-481, 150 PIECES PER REEL



TRAY PACKAGE: 100 PIECES PER TRAY



	THIRD ANGLE PROJECTION 	 CONNECT • CREATE • INNOVATE			
	MILLIMETERS [IN]				
	TOLERANCES UNLESS OTHERWISE NOTED	DESCRIPTION 52-SM CAPTIVE FASTENER ASSEMBLY M3 THREAD			
	ALL DIMENSIONS WITHOUT TOLERANCES ARE FOR REFERENCE ONLY.	SIZE A4	SYSTEM NX	DWG NO. J-52-SM-M3	
<small>PROPRIETARY ITEM EXCEPT FOR USES EXPRESSLY GRANTED IN WRITING, INFORMATION DISCLOSED HEREON IS CONFIDENTIAL AND ALL RIGHTS, PATENT AND OTHERWISE, ARE RESERVED BY SOUTHCO, INC.</small>	PER ASME Y14.5M-1994	DRAWN BY JQ/TVA	DATE 21MAR2012	SCALE 2:1	SHEET 2 OF 2