



PROPRIETARY ITEM - EXCEPT FOR USES EXPRESSLY GRANTED IN WRITING INFORMATION DISCLOSED HEREON IS CONFIDENTIAL AND ALL RIGHTS PATENT AND OTHERWISE ARE RESERVED BY SOUTHCO, INC.

52 CAPTIVE SCREW ASSEMBLY
FLARE-IN STYLE, KNURLED HEAD, M3 THREAD

DATE	DRAWN	CHKD	SCALE
06FEB2002	AJH	TVA	3:1

DRAWING NUMBER
J-52-3-9

REV	DATE	DRAWN/CHKD	DESCRIPTION	PART NUMBER	MATERIAL AND FINISH	PANEL THICKNESS		L	Y	P-1	P-2
						MIN	MAX				
A	16APR2002	TVA/AJH	PRN: P2002-0215 (RELEASED)	52-37-11-X	SEE NOTE A	0.8	2.4	1	0.4	0.8	5.3
B	22MAY2002	RJB	PRN: P2002-0301	52-39-11-X	SEE NOTE A	0.8	2.4	1	0.4	0.8	5.3
C	11NOV2003	LTS/MJS	PRN: P2003-1024								
D	15NOV2017	CMS/CDW	PRN: P2017-2816								
E	28FEB2018	CMS/ACH	PRN: P2018-0522								

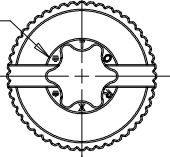
MILLIMETERS

ALL DIMENSIONS WITHOUT TOLERANCES ARE FOR REFERENCE ONLY.

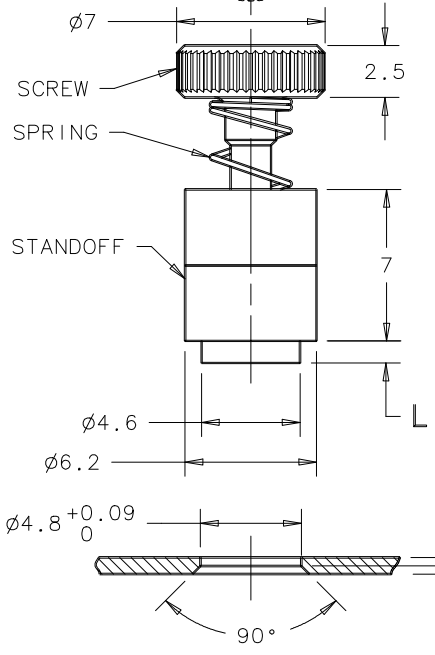
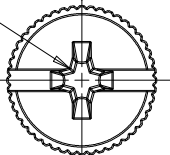
THIRD ANGLE PROJECTION

A4 PAPER SIZE

T15 TORX/SLOT RECESS (52-37-11-X) SEE NOTE A



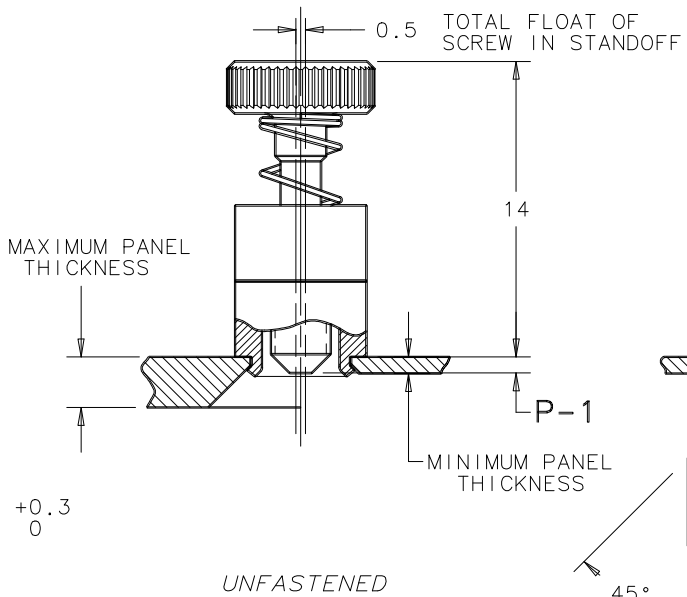
NUMBER 2 PHILLIPS/SLOT RECESS (52-39-11-X) SEE NOTE A



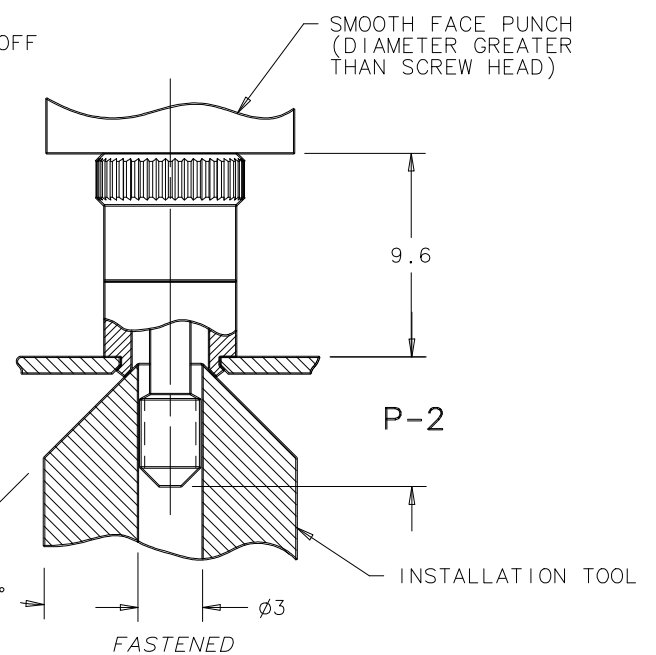
PANEL PREPARATION

NOTES:

- A- SCREW: STEEL, HARDENED, ZINC PLATE PLUS SEALER (X=4, BRIGHT; X=5, BLACK)
SPRING: 302 STAINLESS STEEL, PASSIVATED
STANDOFF: 6000 SERIES ALUMINUM (X=4, NATURAL; X=5. BLACK ANODIZE)
- B- INSTALLATION INSTRUCTIONS:
1. PREPARE THE HOLE IN THE PANEL, COUNTERSINK UNDERSIDE OF THE PANEL AS SHOWN.
2. PUNCH SURFACE AND INSTALLATION TOOL MUST REMAIN PARALLEL DURING FLARING OF STANDOFF.
ONLY USE LIGHT PRESSURE TO FLARE STANDOFF. RECOMMENDED LOAD OF 3000N
3. USE SOUTHCO INSTALLATION TOOL, PART NUMBER 47-104, TO FLARE THIS ASSEMBLY.
- C- TORX IS A REGISTERED TRADEMARK OF THE ACUMENT® INTELLECTUAL PROPERTIES, LLC.
- D- RECOMMENDED MAXIMUM TIGHTENING TORQUE OF 60 N-cm.



UNFASTENED



FASTENED