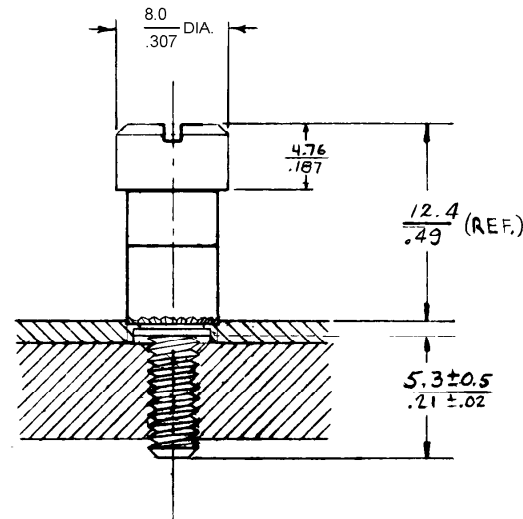
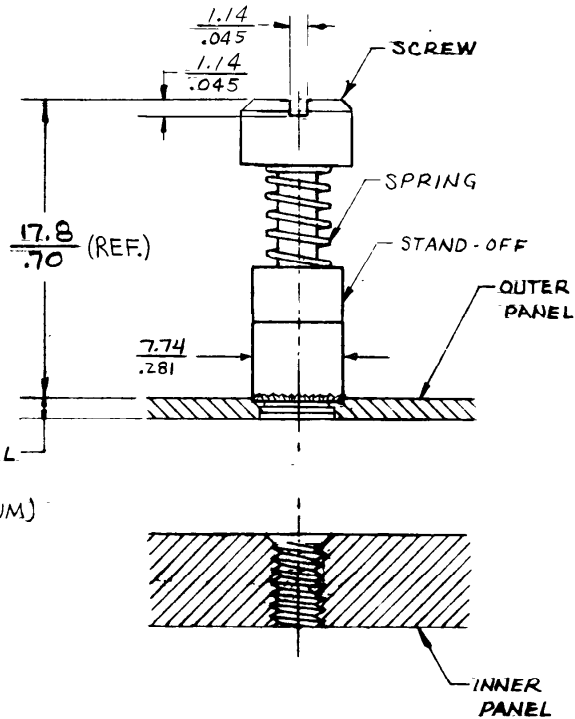




Nº 52 ASSEMBLY-INSTALLATION INSTRUCTIONS
 Nº 6-32 TH'D ~ PRESS-IN INSTALLATION ~ SLOTTED SCREW

DATE	DRAWN	CHKD	SCALE	DRAWING NUMBER
4-24-84	ACZ		N.T.S.	J-52-50-401-24

REV. LET.	DATE	BY-CHKD	REVISIONS	ASSEMBLY PART NUMBER
A	1-15-87	GCB	PRN-52-12	52-50-401-24
B	5-14-87	RJB	17.8/.70 WAS 17.3/.68	
C	6-30-88	WAW	PRN: 52-17	
D	5-MAR-93	VIG	PRN: S-1-03	
E	13APR95	KGS	PRN: 58-98	



INSTALLATION INSTRUCTIONS

1. PREPARE A $6.35^{+0.08}_{-0.00} / .250^{+0.003}_{-0.000}$ DIA. HOLE IN OUTER PANEL.
2. PLACE SCREW ASSEMBLY INTO HOLE IN OUTER PANEL AND PRESS TO CAPTURE ASSEMBLY IN PANEL.
3. INSTALL USING A BACK UP TOOL WITH A $3.66 / .144$ DIA. CLEARANCE HOLE

SCREW FASTENER ASSEMBLY CONSISTS OF ONE EACH OF THE FOLLOWING: SCREW, SPRING AND STANDOFF. ALL COMPONENTS ARE STAINLESS STEEL, PASSIVATED. SPRING IS TYPE 302, SCREW AND STANDOFF ARE TYPE 303.

MILLIMETER/INCH

MILLIMETER
INCH

PROPRIETARY ITEM - EXCEPT FOR USES EXPRESSLY GRANTED IN WRITING, INFORMATION DISCLOSED HEREON IS CONFIDENTIAL AND ALL RIGHTS, PATENT AND OTHERWISE, ARE RESERVED BY SOUTHCO, INC.

TOLERANCE UNLESS OTHERWISE NOTED
 METRIC - TWO PLACE (XX)±0.25 ONE PLACE (X)±0.3
 INCH - DECIMAL±.010

DRAWING NUMBER
J-52-50-401-24