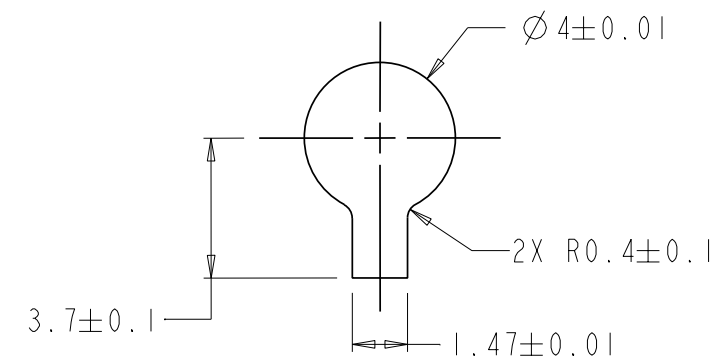
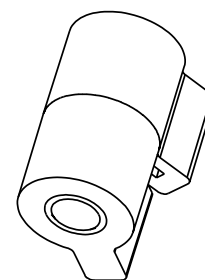
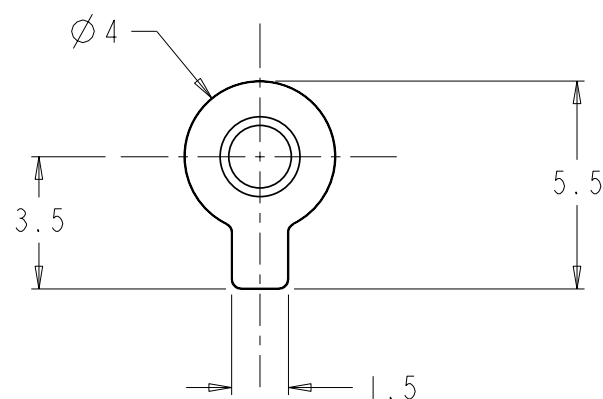
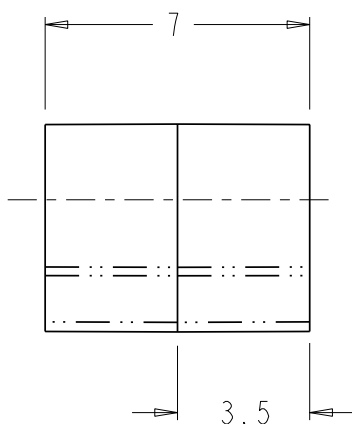


PROPRIETY ITEM - EXCEPT FOR USES EXPRESSLY GRANTED IN WRITING.  
 INFORMATION DISCLOSED HEREON IS CONFIDENTIAL AND ALL RIGHTS  
 PATENT AND OTHERWISE ARE RESERVED BY SOUTHCO, INC.

NOTES:

1. MATERIAL: HOUSING - ZINC ALLOY  
 ADAPTER - ALUMINUM  
 SHAFT - HARDENED STEEL  
 TORQUE ELEMENTS - HARDENED STEEL
2. FINISH: NATURAL
3. FOR MOUNTING IN MATERIALS OTHER THAN POLYMERS  
 CONTACT SOUTHCO FOR DETAILS.

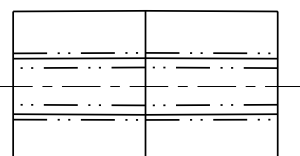
REVISION RECORD			
SYMB	DESCRIPTION	BY	DATE
A	PRN: 2006-0033	GEA/JM	06JAN06
B	PRN: P2006-0314	TK/JM	21FEB06
C	PRN: P2006-0566	JM	13APR06
D	PRN: P2006-0736	AJH/RLR	27MAY2006



**PANEL PREPARATION  
 (POLYMERS)**

1/2 DEGREE MAXIMUM DRAFT  
 3.45 MAX DEPTH

PART NUMBER	TORQUE (IN-LBF)
ST-4A-3S-33	0.3 ± 0.2



ALL DIMENSIONS ARE  
 IN MILLIMETERS  
 ALL DIMENSIONS  
 WITHOUT  
 TOLERANCES  
 ARE FOR  
 REFERENCE  
 ONLY

		TITLE ST-4A HINGE ASSEMBLY	
		DWG No J-ST-4A	REVISION D
DESIGNER CMW	DRAFTER	MATERIAL	
MODEL NAME ST4A1	SCALE 5.000	CALC. WEIGHT/VOL.	
		3.2 ALL SURFACES EXCEPT AS NOTED	06-16-2005
		FORMAT B	