

**southco**

PROPRIETARY ITEM - EXCEPT FOR USES EXPRESSLY GRANTED IN WRITING INFORMATION DISCLOSED HEREON IS CONFIDENTIAL AND ALL RIGHTS PATENT AND OTHERWISE ARE RESERVED BY SOUTHCO, INC.

**MODIFIED No. 47 CAPTIVE FASTENER  
M5 THREAD, SNAP-IN STYLE**

DATE	DRAWN	CHKD	SCALE	DRAWING NUMBER
03MAY2004	AJH	MSR	2:1	N-40484-J

REV	DATE	DRAWN/CHKD	DESCRIPTION	ITEM	PART NUMBER
				ASSEMBLY	47-99-816-XXX

**MILLIMETERS**

ALL DIMENSIONS WITHOUT TOLERANCES ARE FOR REFERENCE ONLY.

THIRD ANGLE PROJECTION

A4 PAPER SIZE

NOTES:

A. SAME AS 47-92-514-14 EXCEPT SCREW IS 4.4mm LONGER AND COLOR

B. MATERIAL AND FINISH:

    KNOB: 6000 SERIES ALUMINUM, POWDER COATED (-XXX)

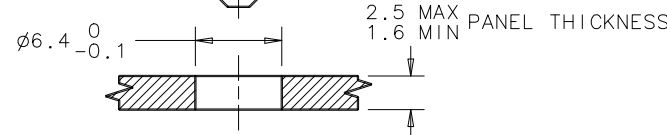
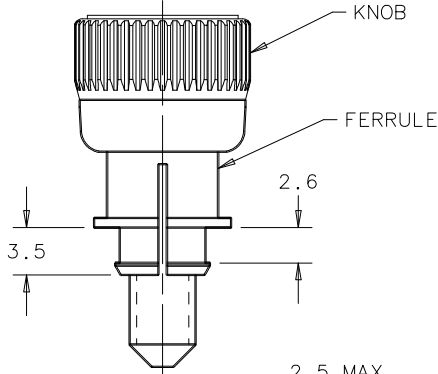
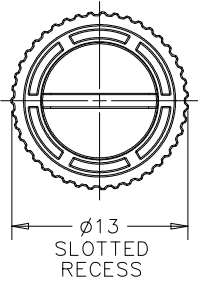
    SCREW: HARDENED CARBON STEEL, ZINC PLATE, CHROMATE PLUS SEALER

(NOTE: FOR FINISH (-XXX) ON SCREW HEAD AND KNOB SEE DRAWING J-47-0-3)

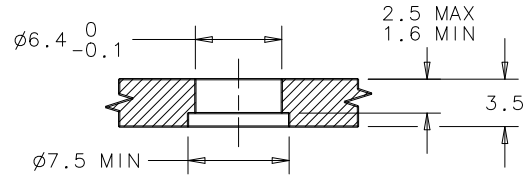
FERRULE: 6000 SERIES ALUMINUM, NATURAL

SPRING (INTERNAL COMPONENT, NOT SHOWN): 300 SERIES STAINLESS STEEL, PASSIVATED

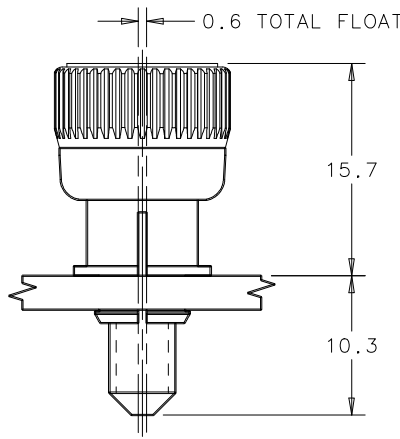
- C. TO INSTALL FASTENER:
1. PREPARE PANEL AS SHOWN. NOTE: IF HOLES ARE DRILLED, TOP EDGE OF HOLE SHOULD BE CHAMFERED.
  2. SCREW ASSEMBLY CAN BE INSTALLED WITH FINGER PRESSURE FROM PUNCH SIDE OF PANEL. NOTE: ASSEMBLY MUST BE KEPT PERPENDICULAR TO PANEL WHILE SNAPPING INTO HOLE.
  3. FOR INSTALLATION FORCE GUIDELINES SEE DRAWING TD-47-10-J.
- D. KNOB AND SCREW ARE SPRING LOADED OUTWARD AS SHOWN BELOW.



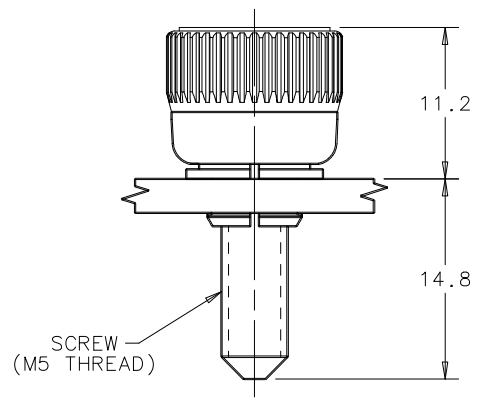
**PANEL PREPARATION I**  
REQUIRES SPACE BETWEEN INNER AND OUTER PANELS



**PANEL PREPARATION II**  
PROVIDES A FLUSH PANEL-TO-PANEL CONDITION WHEN FASTENED



**UNFASTENED**



**FASTENED**