

<b>southco</b>		PROPRIETARY ITEM - EXCEPT FOR USES EXPRESSLY GRANTED IN WRITING INFORMATION DISCLOSED HEREON IS CONFIDENTIAL AND ALL RIGHTS PATENT AND OTHERWISE ARE RESERVED BY SOUTHCO, INC.			NO. 47 SENTINEL™ SCREW ASSEMBLY PRESS-IN STYLE, 6-32 THREAD SIZE			DATE 01APR96	DRAWN JSS	CHKD CRS	SCALE 2:1	DRAWING NUMBER J-47-3-632-1
REV	DATE	DRAWN/CHKD	DESCRIPTION	PART NUMBER	P-1	P-2	*T*					
A	15AUG96	JSS	PRN: 47-221	47-W0-2X1-Y2	.02	.21	.75					
B	06SEP96	JSS	PRN: 47-223	47-W1-2X1-Y2	.09	.27	.81					
C	03APR98	MDM	PRN: 47-299	47-W2-2X1-Y2	.15	.33	.87					
D	09APR98	VP	PRN: 47-312	47-W3-2X1-Y2	.21	.40	.94					
E	17JUN98	MBC	PRN: 47-312A									
F	18JUL2005	CSC/MDY	PRN: P2005-0746									
G	28MAR2006	RLR/MDY	PRN: P2006-0276									
H	14FEB2012	CMS/TVA	PRN: P2011-1182									



INCHES  
ALL DIMENSIONS WITHOUT TOLERANCES ARE FOR REFERENCE ONLY.

NOTES:  
A. MATERIAL AND FINISH:

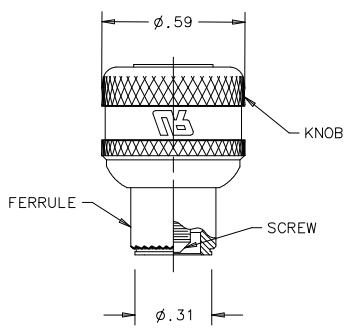
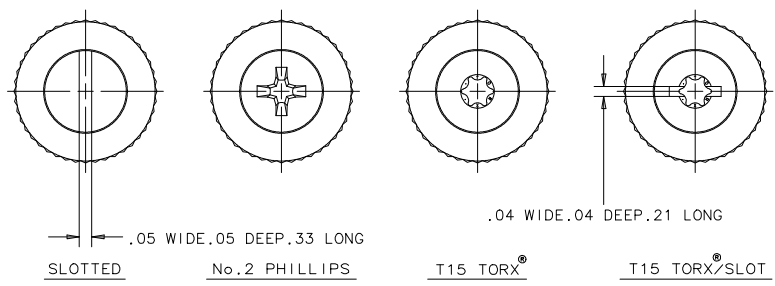
KNOB: ALUMINUM, NATURAL OR BLACK ORGANIC COATING  
SCREW: 1008 CASE HARDENED STEEL, ZINC PLATE CHROMATE PLUS SEALER OR BLACK ORGANIC COATING.  
FERRULE: CASE HARDENED STEEL, ZINC PLATE CHROMATE PLUS SEALER.  
SPRING: 302 STAINLESS STEEL, PASSIVATED.  
RATCHET MECHANISM: HARDENED STEEL, BLACK OXIDE

\*W\* THREAD      \*X\* SCREW RECESS      \*Y\* FINISH ON KNOB AND SCREW  
6- 6-32            0- SLOTTED                    2- NATURAL (BRIGHT)  
                          2- PHILLIPS                    6- BLACK  
                          4- TORX®  
                          6- TORX®/SLOT COMBINATION

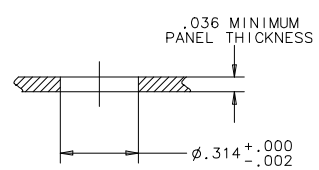
B. FOR USE IN LOW CARBON STEELS, ALUMINUM AND STAINLESS STEELS IN THE ANNEALED CONDITION THAT ARE R<sub>B</sub>85 OR SOFTER.

- INSTALLATION INSTRUCTIONS:  
1. PREPARE PANEL AS SHOWN. TOP EDGE OF HOLE SHOULD BE SHARP. RECOMMENDED MIN. DISTANCE FROM EDGE OF PANEL TO THE CENTERLINE OF THE HOLE IS .47.  
2. PLACE FERRULE INTO INSTALLATION HOLE.  
3. PROVIDE A SOLID BACK-UP SURFACE BEHIND THE PANEL WITH A CLEARANCE HOLE OF  $\phi .146 \pm .004$  FOR THE SCREW.  
4. PRESS THE KNURL INTO PANEL UNTIL ONLY THE TOP OF THE KNURL ON THE FERRULE IS VISIBLE.  
5. HAND TIGHTEN FIRMLY TO ENGAGE THE RATCHET MECHANISM.

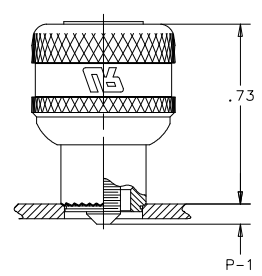
SCREW RECESS STYLES



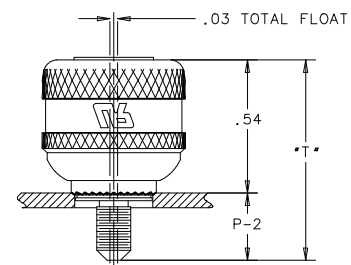
UNFASTENED SCREW RETRACTED



PANEL PREPARATION



UNFASTENED SCREW PROJECTED



FASTENED