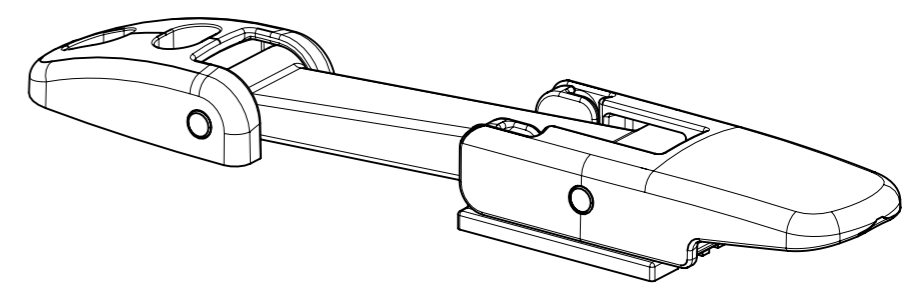
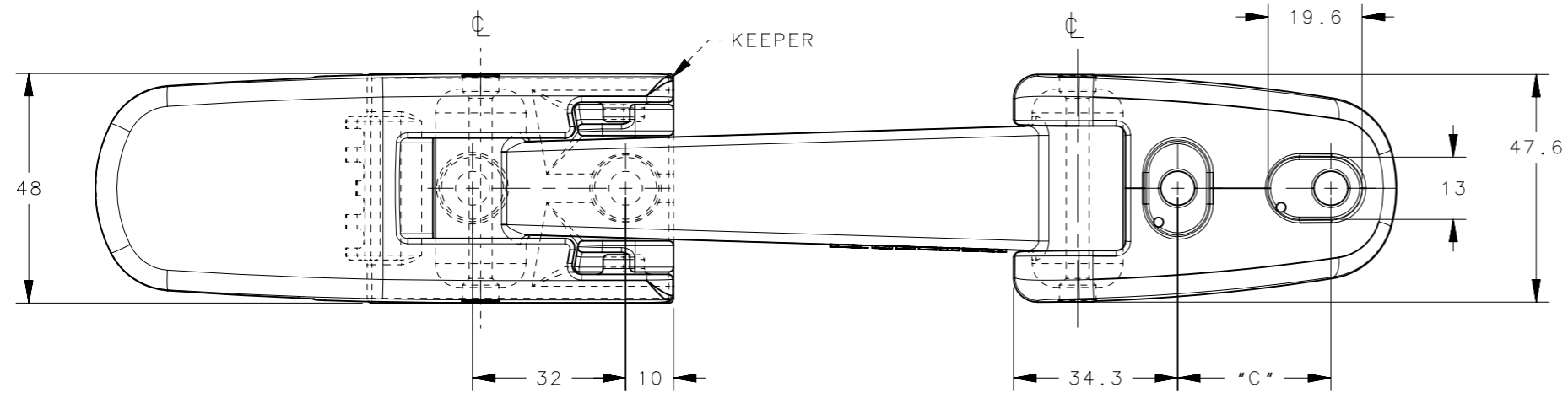
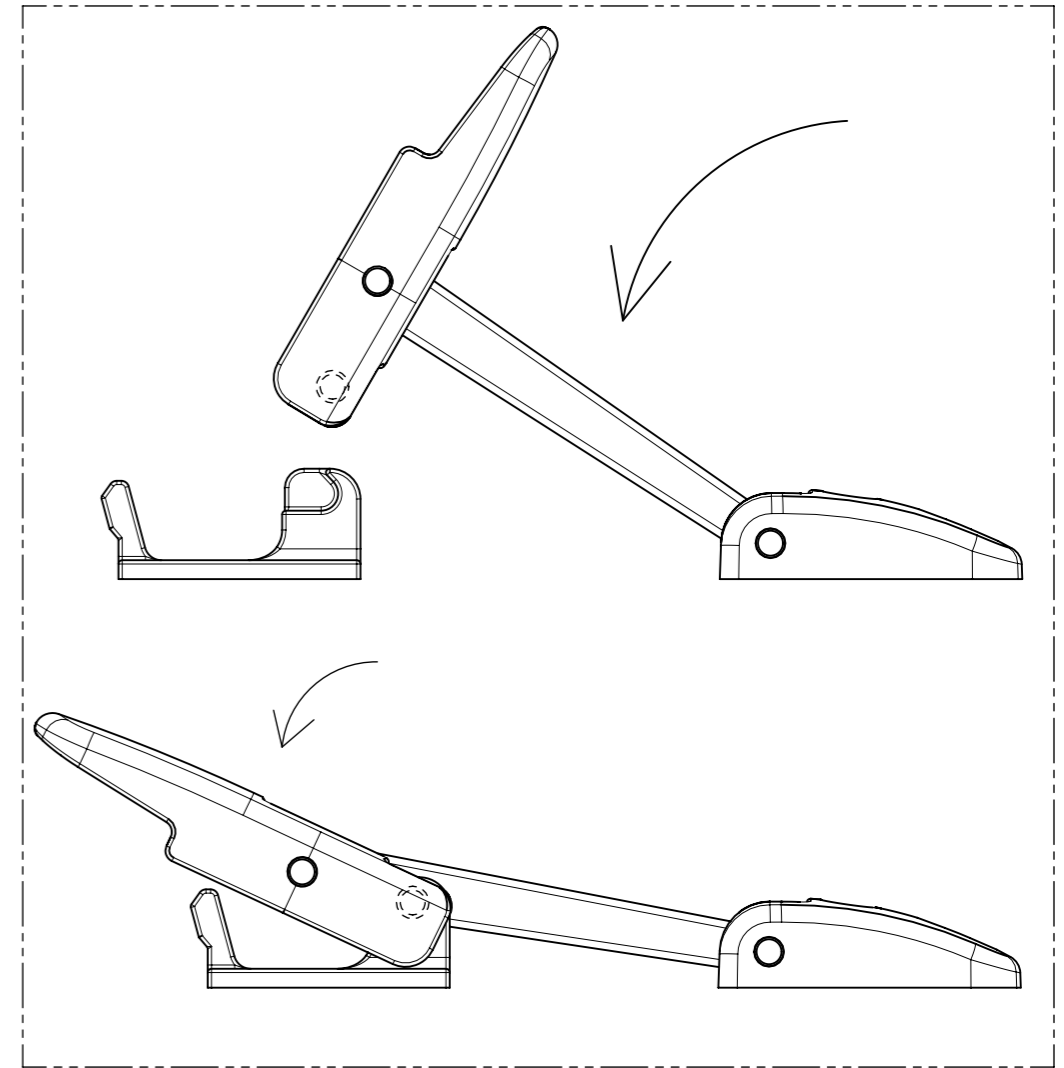
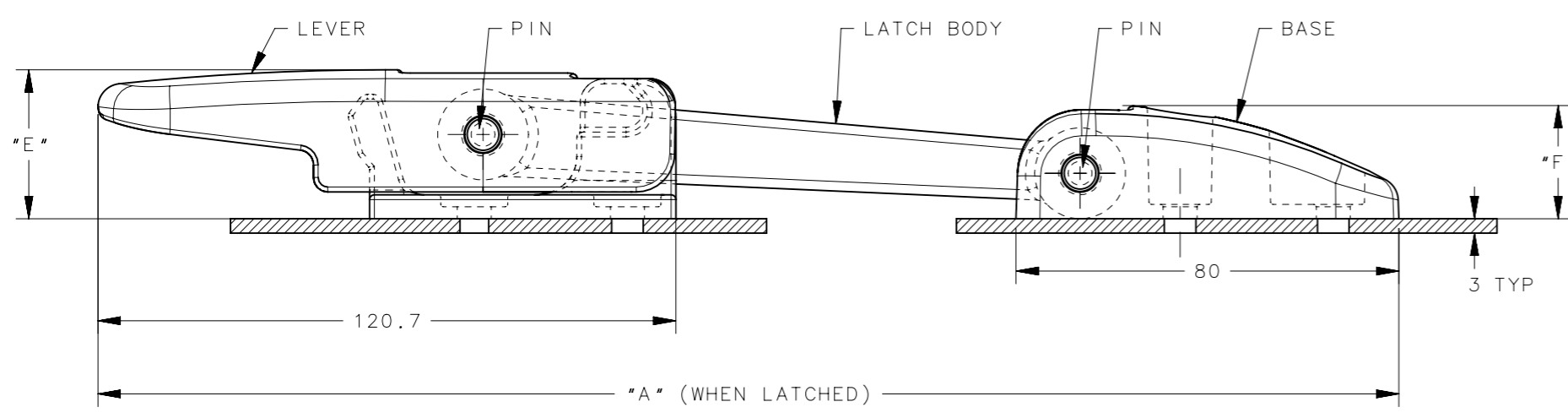


REVISION HISTORY			
REV	DATE	BY	DESCRIPTION
I	27MAR2018	JGG/ACH	PRN: P2018-0741

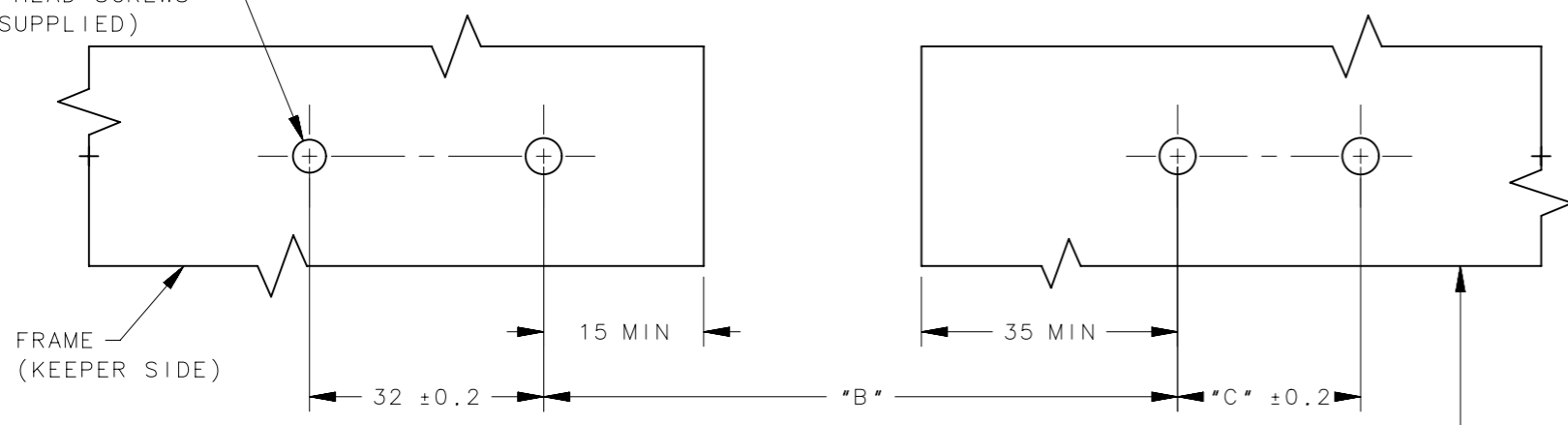


SCALE 1:2



**LATCH OPERATION**

(4X) Ø "D" ±0.1  
USE M5 OR M6 PAN OR  
ROUND HEAD SCREWS  
(NOT SUPPLIED)



NOTES:  
PART SHIPPED LAYER PACKAGED.  
FOR INDIVIDUAL BAGGED ASSEMBLIES ADD -2 TO PART NUMBER. (EXAMPLE: 37-30-294-60-2)

**MATERIAL AND FINISH:**  
LATCH BODY: EPDM RUBBER, OR POLYURETHANE (305), BLACK  
LEVER, KEEPER, AND BASE: GLASS-FILLED NYLON, BLACK  
PIN: STAINLESS STEEL OR HARDENED STAINLESS STEEL (37-40-305-60 ONLY)

PART NUMBER	A	B	C	D	E	F
37-40-305-60	300	144±4	32	6.6	39.1	29
37-40-295-60	300	144±4	32	6.6	31.1	23.5
37-30-297-60	379	222±6	25.4	5.5	31.1	23.5
37-30-294-60	254	97±3	25.4	5.5	31.1	23.5

THIRD ANGLE PROJECTION				
MILLIMETERS [IN]				
SURFACE AREA	TOLERANCES UNLESS OTHERWISE NOTED		DESCRIPTION	
VOLUME	ALL DIMENSIONS WITHOUT TOLERANCES ARE FOR REFERENCE ONLY.		37 DRAW LATCH	
PROPRIETARY ITEM	SIZE	SYSTEM	DWG NO.	J-37-29
EXCEPT FOR USES EXPRESSLY GRANTED IN WRITING, INFORMATION DISCLOSED HEREON IS CONFIDENTIAL AND ALL RIGHTS, PATENT AND OTHERWISE, ARE RESERVED BY SOUTHCO, INC.	A3	NX		
PER ASME Y14.5M-1994	DRAWN BY	DATE	SCALE	SHEET
	DLH/JSS	11OCT1996	1:1	1 OF 1