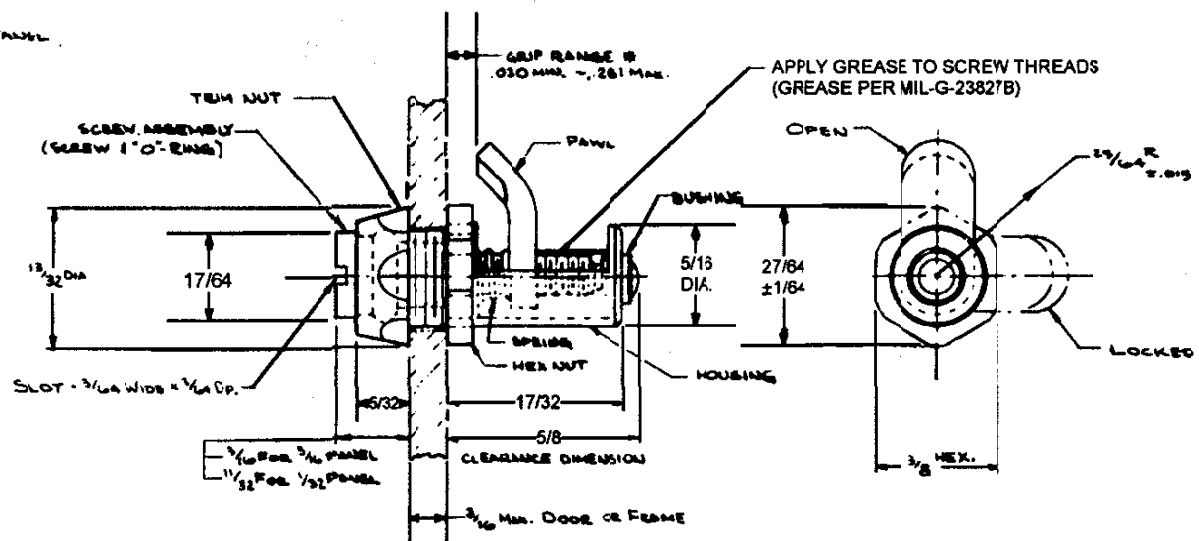
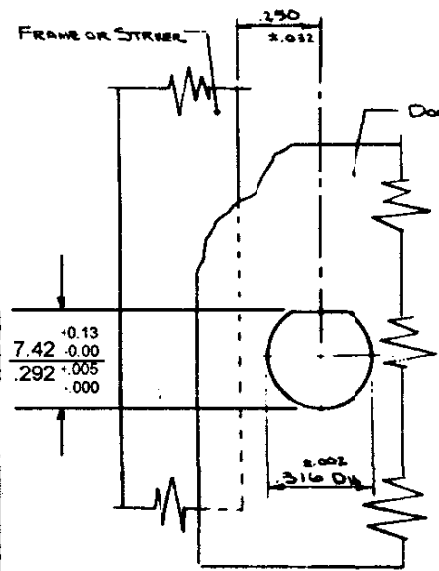


REV. LET.	DATE	BY-CHKD	REVISIONS	ITEM	PART No.	MATERIAL	FINISH	R.S.	DATE	APP.
Q	8-15-89	ESY	DELETED PREVIOUS REV. JUNE 27-88	ASSEMBLY	27-20-501-50			A	7-12-71	
H	11-13-89	PKR	PRN: 27-48B	SCREW ASSEMBLY	27-26-501-50	SEE NOTE "A"	SEE NOTE "A"	B	8-4-71	
I	18 JAN 93	JSK	PRN: 14-75	HOUSING	27-0-7996-25	STAINLESS STL	BLACK ORGANIC COATING	C	6-29-71	
				PAWL	27-23-101-24		PASSIVATE	D	10-27-71	
				SPRINGS	27-14-101-24		PASSIVATE			
				TRIM NUT	27-82-403-25		BLACK ORGANIC COATING			
				HEX NUT	27-83-301-24	STAINLESS STEEL	PASSIVATE			
				BUSHING	27-81-301-15	BRASS	NATURAL			

THESE ASSEMBLIES ARE NON-REPAIRABLE ITEMS AND COMPONENTS ARE NOT AVAILABLE AS REPLACEMENT OR REPAIR PARTS.

NOTE "A" - SCREW - STAINLESS STL ~ BLACK ORGANIC COATING  
 "O"-RING - SYNTHETIC RUBBER ~ NATURAL

IF OUTER PAWL THICKNESS PERMITTING, MAX. GRIP MAY BE EXTENDED WHERE NECESSARY BY ADJUSTING HEX NUT TOWARD SCREW HEAD.



**Mounting Instructions**

PUNCH SHAPED HOLE IN PANEL, LOCATED AS SHOWN. INSERT FASTENER FROM BACK SIDE OF PANEL, MAKING SURE HEX NUT IS AT BACK EDGE OF HOUSING CUTOUT. SUP TRIM NUT OVER SCREW AND RUN DOWN FINGER TIGHT AGAINST PANEL. WITH PAWL IN LOCKED POSITION AND HOUSING PROPERLY ORIENTED, HOLD HOUSING IN POSITION AND TIGHTEN HEX NUT HARD AGAINST PANEL WITH 3/8 OPEN-END WRENCH THEN PUSH KNOB ONTO KNURLED HEAD OF SCREW.