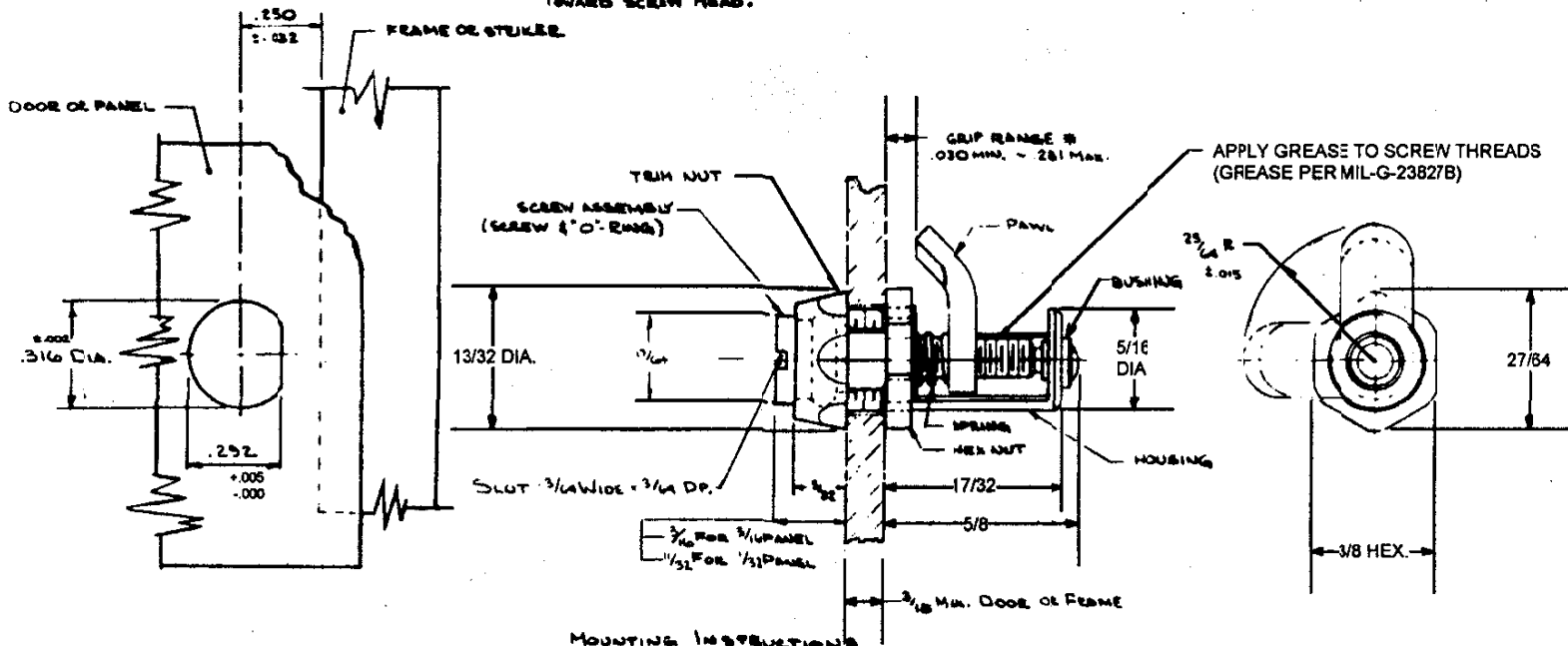


REV. LET.	DATE	BY-CHKD	REVISIONS	ITEM	PART No.	MATERIAL	FINISH	R.S.	DATE	APP.
G	4-11-89	DWF	PRN: 27-46	ASSEMBLY	27-10-501-50			A		
H	8-15-89	ESH	PRN: 27-48	SCREW ASSEMBLY	27-16-501-50	SEE NOTE "A"	SEE NOTE "A"	B		
I	11-13-89	PKE	PRN: 27-48 B	HOUSING	27-0-7950-25	STAINLESS STL	BLACK ORGANIC COATING	C		
J	18 JAN 93	JSK	PRN: 14-75	PAWL	27-13-101-2A		PASSIVATE	D		
				SPRING	27-14-102-2A		PASSIVATE			
				TECH NUT	27-82-403-25		BLACK ORGANIC COATING			
				HEX NUT	27-83-301-2A	STAINLESS STL	PASSIVATE			
				BUSHING	27-81-301-15	BRASS	NATURAL			

THESE ASSEMBLIES ARE NON-REPAIRABLE ITEMS
 AND COMPONENTS ARE NOT AVAILABLE AS RE-
 PLACEMENT OR REPAIR PARTS.

NOTE "A" ~ SCREW - STAINLESS STL ~ BLACK ORGANIC COATING
 "O" RING - SYNTHETIC RUBBER ~ NATURAL

IF OUTER PAWL THICKNESS PERMITTING, MAX. GRIP MAY BE
 EXTENDED WHERE NECESSARY BY ADJUSTING HEX NUT
 TOWARD SCREW HEAD.



MOUNTING INSTRUCTIONS

PUNCH SHAPED HOLE IN PANEL, LOCATED AS SHOWN. INSERT FASTENER FROM BACK SIDE OF PANEL, MAKING SURE HEX NUT IS AT BACK EDGE OF HOUSING. CUT OUT. SLIP TECH NUT OVER SCREW AND RUN DOWN FINGER TIGHT AGAINST PANEL. WITH PAWL IN LOCKED POSITION AND HOUSING PROPERLY ORIENTED, HOLD HOUSING IN POSITION AND TIGHTEN HEX NUT HARD AGAINST PANEL WITH $\frac{3}{8}$ OPEN-END WRENCH