



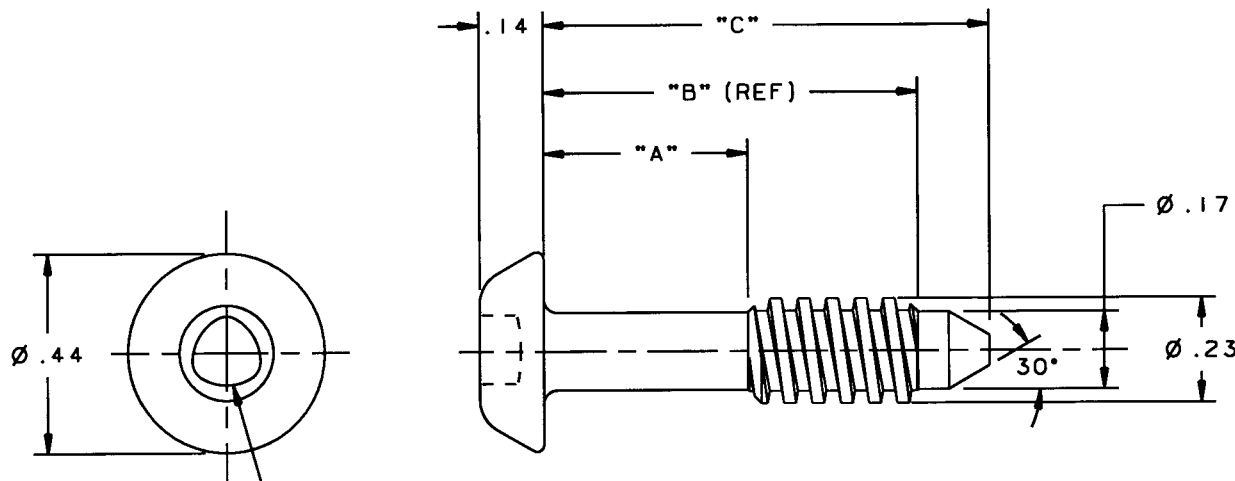
NO. 12 TOOLHEAD SCREWS
200 TO 600 LENGTHS

DATE	DRAWN	CHKD	SCALE	DRAWING NUMBER
12-9-87	JHV		NTS	J-12-T-1

REV.	DATE	BY-CHKD	REVISIONS
A	/24/89	JHV	DWG WAS NJ-12-29-11-1; REDRAWN ON CAD
B	03 FEB 93	MPF	PRN: S-99-1-D
C	07NOV96	JGK	PRN: S-1-06A

MATERIAL - CARBON STEEL
HEAT TREAT - CASE HARDENED
FINISH - ZINC PLATE, CHROMATE PLUS SEALER.

PART NO.	"A"	"B"	"C"
12-T-102	.100	.328	.486
12-T-103	.150		
12-T-202	.100		
12-T-203	.150	.453	.611
12-T-204	.200		
12-T-205	.250		
12-T-302	.100		
12-T-303	.150		
12-T-304	.200	.578	.736
12-T-305	.250		
12-T-307	.350		
12-T-402	.100		
12-T-403	.150		
12-T-404	.200	.703	.861
12-T-405	.250		
12-T-407	.350		
12-T-409	.450		
12-T-502	.100		
12-T-503	.150		
12-T-504	.200	.828	.986
12-T-505	.250		
12-T-507	.350		
12-T-509	.450		
12-T-511	.550		
12-T-602	.100		
12-T-603	.150		
12-T-604	.200		
12-T-605	.250		
12-T-607	.350	.953	1.111
12-T-609	.450		
12-T-611	.550		
12-T-613	.650		
12-T-615	.750		



No. 4 SIZE TOOLHEAD RECESS:
OPERATE WITH SOUTHCO KEY 29-90-214-10
OR DRIVER 29-90-114-10

FORMAT 3/88

PROPRIETARY ITEM - EXCEPT FOR USES EXPRESSLY GRANTED IN WRITING
INFORMATION DISCLOSED HEREON IS CONFIDENTIAL AND ALL RIGHTS PATENT
AND OTHERWISE ARE RESERVED BY **SOUTHCO, INC.**

PAT. PENDING

ALL DIMENSIONS WITHOUT TOLERANCES ARE REFERENCE.
DIMENSIONS IN INCHES.
THIRD ANGLE PROJECTION

DRAWING NUMBER
J-12-T-1