

Cup

ISCUP Cup 2 80x40x30

Part no.: 10.01.15.00004

<https://www.schmalz.com/10.01.15.00004>



Homepage > Vacuum Clamping Technology > Clamping Solutions for Woodworking > Modernization of CNC Machining Centers > Innospann Steel-Plate > ISCUP Cup 2 80x40x30

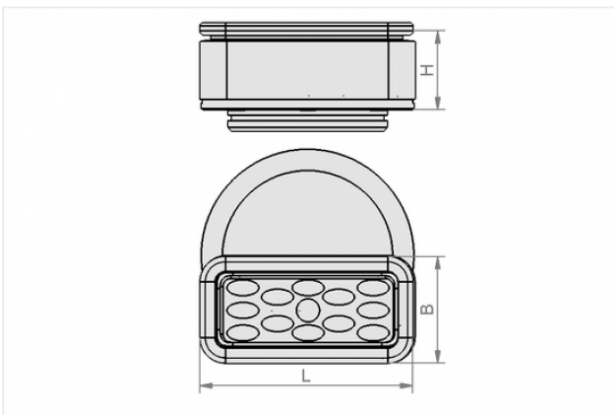
Suction cup for Innospann



Dimensions (LxB): 80 x 40 mm

Height H: 30 mm

Design Data



Attribute	Value
-----------	-------

B	40 mm
---	-------

H	30 mm
---	-------

L	80 mm
---	-------

Technical Data

Attribute	Value
-----------	-------

Weight	0.092 kg
--------	----------

Contact to Schmalz

J. Schmalz GmbH | Johannes-Schmalz-Straße, 72293 Glatten, Deutschland | +49 7443 2403-102 | customercenter@schmalz.de

Spare Parts



ISRPL 66x26x8.5

Part no. 10.01.15.00018

Friction plate

Length: 66 mm

Width: 26 mm

Height: 8.5 mm

Type: Cup 2



ISDR 81x43x12 Cup 2

Part no. 10.01.15.00021

Sealing frame

Length L: 81 mm

Width B: 43 mm

Height H: 12 mm

Type: Cup 2



DI-PROF 4x10 MOS EPDM HR

Part no. 10.01.15.00062

Sealing section for construction of specific gripper solutions

Width B: 4 mm

Height H: 10 mm

Material-Type: Foam rubber

Sealing material: EPDM

Shape: half-round