

# Cup

## ISCUP Cup 1 80x80x30

Part no.: 10.01.15.00003

<https://www.schmalz.com/10.01.15.00003>



Homepage > Vacuum Clamping Technology > Clamping Solutions for Woodworking > Modernization of CNC Machining Centers > Innospann Steel-Plate > ISCUP Cup 1 80x80x30

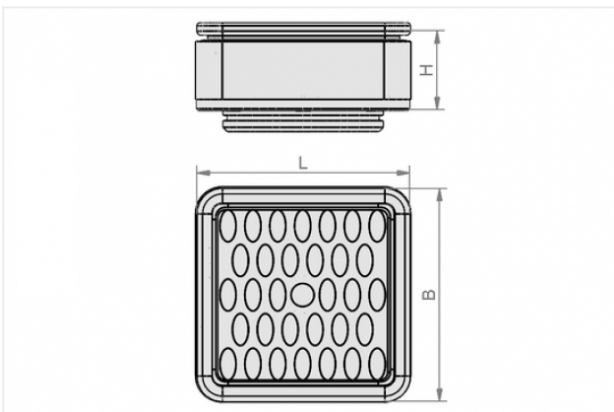
### Suction cup for Innospann



Dimensions (LxB): 80 x 80 mm

Height H: 30 mm

### Design Data



Attribute	Value
-----------	-------

B	80 mm
---	-------

H	30 mm
---	-------

L	80 mm
---	-------

### Technical Data

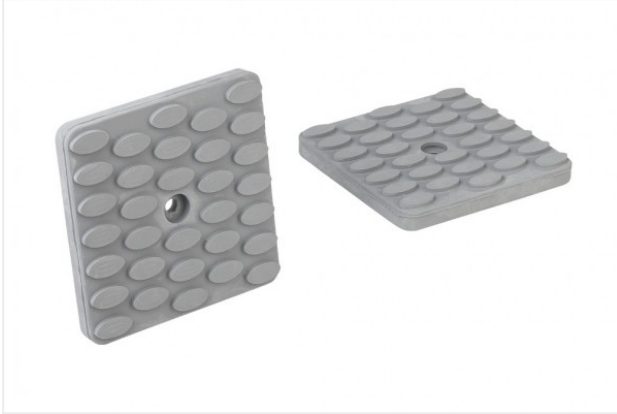
Attribute	Value
-----------	-------

Weight	0.148 kg
--------	----------

### Contact to Schmalz

J. Schmalz GmbH | Johannes-Schmalz-Straße, 72293 Glatten, Deutschland | +49 7443 2403-102 | [customercenter@schmalz.de](mailto:customercenter@schmalz.de)

## Spare Parts



### **ISRPL 66x66x8.5**

Part no. 10.01.15.00017

Friction plate

Length: 66 mm

Width: 66 mm

Height: 8.5 mm

Type: Cup 1



### **ISDR 81x81x12 Cup 1**

Part no. 10.01.15.00020

Sealing frame

Length L: 81 mm

Width B: 81 mm

Height H: 12 mm

Type: Cup 1



### **DI-PROF 4x10 MOS EPDM HR**

Part no. 10.01.15.00062

Sealing section for construction of specific gripper solutions

Width B: 4 mm

Height H: 10 mm

Material-Type: Foam rubber

Sealing material: EPDM

Shape: half-round