

Vacuum pump EVE-TR 40 AC3

Part no.: 10.03.01.00142

<https://www.schmalz.com/10.03.01.00142>



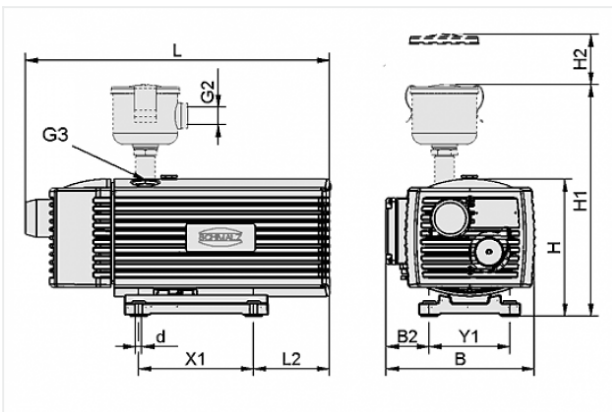
Homepage > Vacuum Technology for Automation > Vacuum Components > Vacuum Generators > Vacuum Pumps > Dry-Running Vacuum Pumps
EVE-TR > EVE-TR 40 AC3

Oil-free pump with constant suction rate, robust, requires little maintenance



Noise level (50 Hz): 67 dB
Voltage (50 Hz): 190-255V or 330-440V
Voltage (60 Hz): 190-290V or 330-500V
Suction rate (50 Hz): 40 m³/h
Suction rate (60 Hz): 48 m³/h
Vacuum (50Hz): -850 mbar
Rated power (50 Hz): 1.25 kW
Rated power (60 Hz): 1.5 kW
Weight: 38.5 kg

Design Data



Attribute	Value
B	280 mm
B2	51 mm
d	7 mm
G3	G3/4"-F
H	290 mm
L	572 mm
L2	131 mm
X1	220 mm
Y1	190 mm

Contact to Schmalz

J. Schmalz GmbH | Johannes-Schmalz-Straße, 72293 Glatten, Deutschland | +49 7443 2403-102 | customercenter@schmalz.de

Technical Data

Attribute	Value
Suction rate (50 Hz)	40 m ³ /h
Suction rate (60 Hz)	48 m ³ /h
Voltage (50 Hz)	190-255V or 330-440V
Voltage (60 Hz)	190-290V or 330-500V
Rated power (50 Hz)	1.25 kW
Rated power (60 Hz)	1.5 kW
Current type	AC3
Noise level (50 Hz)	67 dB
Weight	38.5 kg
Protection	IP 55

Spare Parts



FILT-EINS EVE-TR-25-40

Part no. 10.03.01.00029

Filter insert (round)

for: Pump EVE-TR

Size: 25-40

Accessories

[Contact to Schmalz](#)



MSS-K 4-6.3A

Part no. 10.04.04.00121

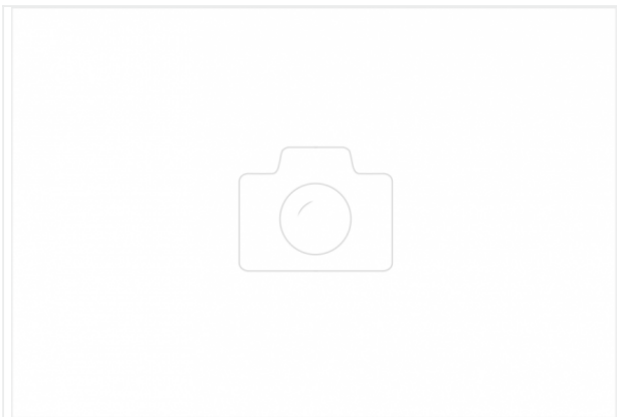
Motor-protection switch with housing

Current range: 4.0 ... 6.3 A

Actuation: Rotary switch

Colour: grey

Protection: IP 65



VBV -950...0 G1-AG EVE 10-40

Part no. 10.03.01.00136

Vacuum valve for limiting the maximum vacuum pressure

Vacuum range: -950 ... 0 mbar

Thread G1: G1"-M

Length L: 53.5 mm

for: Pump EVE

Size: 10-40



VST EVE-TR-40

Part no. 10.03.01.00135

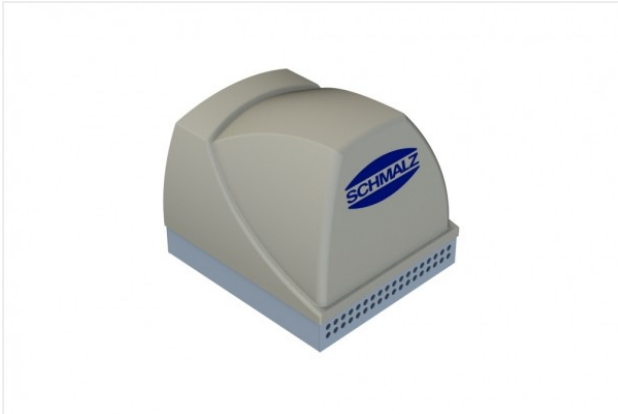
Set of parts subject to wear pump

for: Pump EVE-TR

Size: 40

contains: Brush slide kit

and: Filter



SBB-650x575x565-ST-VZ

Part no. 10.04.04.00117

Silencer box for reduction of the noise level

Material: Steel

Surface: galvanised

Length L: 650 mm

Width B: 575 mm

Height H: 565 mm