

# Vacuum pump EVE-TR 16 AC F

Part no.: 10.03.01.00146

<https://www.schmalz.com/10.03.01.00146>



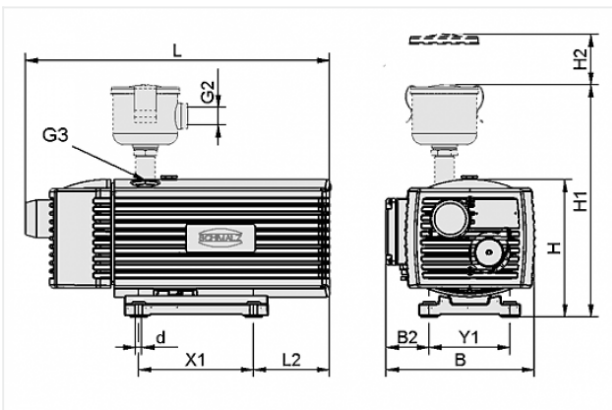
Homepage > Vacuum Technology for Automation > Vacuum Components > Vacuum Generators > Vacuum Pumps > Dry-Running Vacuum Pumps  
EVE-TR > EVE-TR 16 AC F

## Oil-free pump with constant suction rate, robust, requires little maintenance



Noise level (50 Hz): 61 dB  
Voltage (50 Hz): 220-240V  
Voltage (60 Hz): 220-240V  
with: Filter  
Suction rate (50 Hz): 16 m<sup>3</sup>/h  
Suction rate (60 Hz): 19 m<sup>3</sup>/h  
Vacuum (50Hz): -850 mbar  
Rated power (50 Hz): 0.55 kW  
Rated power (60 Hz): 0.66 kW  
Weight: 23.4 kg

### Design Data



| Attribute | Value |
|-----------|-------|
|-----------|-------|

|   |        |
|---|--------|
| B | 231 mm |
|---|--------|

|    |       |
|----|-------|
| B2 | 66 mm |
|----|-------|

|   |      |
|---|------|
| d | 7 mm |
|---|------|

|    |        |
|----|--------|
| G2 | G3/4-F |
|----|--------|

|    |        |
|----|--------|
| G3 | G1/2-F |
|----|--------|

|   |        |
|---|--------|
| H | 214 mm |
|---|--------|

|    |        |
|----|--------|
| H1 | 345 mm |
|----|--------|

|    |       |
|----|-------|
| H2 | 70 mm |
|----|-------|

|   |        |
|---|--------|
| L | 452 mm |
|---|--------|

|    |       |
|----|-------|
| L2 | 73 mm |
|----|-------|

|    |        |
|----|--------|
| X1 | 202 mm |
|----|--------|

|    |        |
|----|--------|
| Y1 | 125 mm |
|----|--------|

### Contact to Schmalz

J. Schmalz GmbH | Johannes-Schmalz-Straße, 72293 Glatten, Deutschland | +49 7443 2403-102 | [customercenter@schmalz.de](mailto:customercenter@schmalz.de)

## Technical Data

| Attribute            | Value                |
|----------------------|----------------------|
| Suction rate (50 Hz) | 16 m <sup>3</sup> /h |
| Suction rate (60 Hz) | 19 m <sup>3</sup> /h |
| Voltage (50 Hz)      | 220-240V             |
| Voltage (60 Hz)      | 220-240V             |
| Rated power (50 Hz)  | 0.55 kW              |
| Rated power (60 Hz)  | 0.66 kW              |
| Current type         | AC                   |
| Noise level (50 Hz)  | 61 dB                |
| Weight               | 23.4 kg              |
| Protection           | IP 54                |

## Spare Parts



### **FILT-EINS 3 65x70 PAP STF-3/4-IG**

Part no. 10.07.01.00017

Filter insert (round)

Filter pore size: 3 µm

External diameter D: 65 mm

Length L: 70 mm

Filter material: Paper

for: Filters STF

Size: 3/4-IG

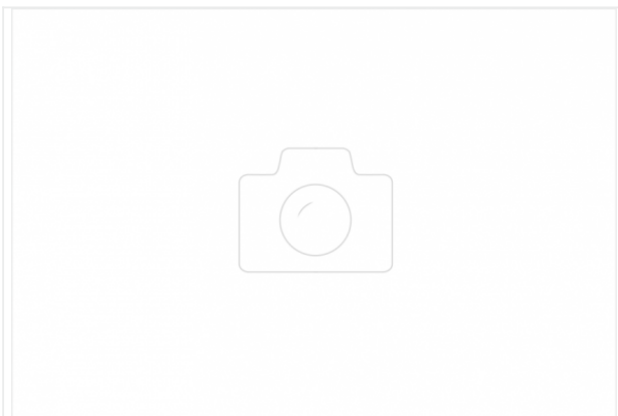


**FILT-EINS EVE-16-25**  
Part no. 10.03.01.00022  
Filter insert (round)  
for: Pump  
Size: 16-25

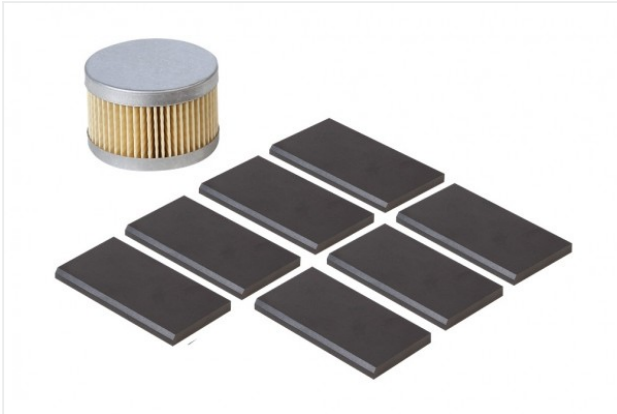
## Accessories



**MSS-K 4-6.3A**  
Part no. 10.04.04.00121  
Motor-protection switch with housing  
Current range: 4.0 ... 6.3 A  
Actuation: Rotary switch  
Colour: grey  
Protection: IP 65



**VBV -950...0 G1-AG EVE 10-40**  
Part no. 10.03.01.00136  
Vacuum valve for limiting the maximum vacuum pressure  
Vacuum range: -950 ... 0 mbar  
Thread G1: G1"-M  
Length L: 53.5 mm  
for: Pump EVE  
Size: 10-40



**VST EVE-TR-16**

Part no. 10.03.01.00133

Set of parts subject to wear pump  
for: Pump EVE-TR

Size: 16

contains: Brush slide kit  
and: Filter



**SBB-650x575x565-ST-VZ**

Part no. 10.04.04.00117

Silencer box for reduction of the noise level

Material: Steel

Surface: galvanised

Length L: 650 mm

Width B: 575 mm

Height H: 565 mm