

Compact ejector

SMPi 20 IMP RD M12-5

<https://www.schmalz.com/10.02.02.03353>



Part no.: 10.02.02.03353

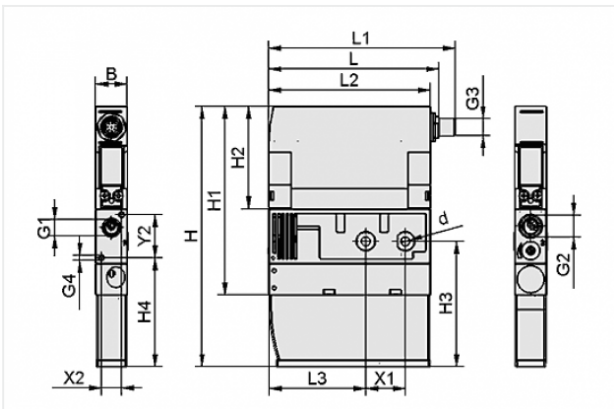
Homepage > Vacuum Technology for Automation > Vacuum Components > Vacuum Generators > Compact Ejectors > Compact Ejectors SCPI / SMPi > SMPi 20 IMP RD M12-5

Compact ejector MEGA PUMP with power blow-off function



Nozzle size: 2,0 mm
 Suction rate (max): 135 l/min
 Air consumption (during evac.): 180 l/min
 Noise level (free): 75 dB
 at operating press.: 4.0 ... 7.0 bar
 Vacuum (max): -850 mbar
 Control: Double pilot valve
 with: digital air-saving function
 Electrical connection:
 Male connect M12, 5 pol
 Protection: IP 65

Design Data



| Attribute | Value |
|-----------|----------|
| B | 22 mm |
| d | 6.6 mm |
| G1 | G1/4"-F |
| G2 | G3/8"-F |
| G3 | M12x1-M |
| G4 | M4-F |
| H | 181.5 mm |
| H1 | 131.5 mm |
| H2 | 71.5 mm |
| H3 | 87.5 mm |
| H4 | 76 mm |

Contact to Schmalz

J. Schmalz GmbH | Johannes-Schmalz-Straße, 72293 Glatten, Deutschland | +49 7443 2403-102 | customercenter@schmalz.de

| Attribute | Value |
|-----------|----------|
| L | 118.5 mm |
| L1 | 129.7 mm |
| L2 | 112.5 mm |
| L3 | 67.5 mm |
| X1 | 27.5 mm |
| X2 | 14 mm |
| Y2 | 30 mm |

Technical Data

| Attribute | Value |
|---|------------------------|
| Nozzle diameter | 2 mm |
| Degree of evacuation | 85 % |
| Suction rate (max) | 8.1 m ³ /h |
| Suction rate (max) | 135 l/min |
| Air consumption (during evac.) | 10.8 m ³ /h |
| Air consumption (during evac.) | 180 l/min |
| Air consumption (blow off) (max) | 200 l/min |
| Noise level (free) | 75 dB |
| Pressure range (operating pressure) | 4.0 ... 7.0 bar |
| Int. hose diameter (recom.) comp.-air | 6 mm |
| Int. hose diameter (recom.) vacuum side | 8 mm |
| Control | Double pilot valve |
| Weight | 0.56 kg |
| Ambient temperature | 0 ... 50 °C |
| Pressure range (operating pressure) | 58.0 ... 101.5 psi |

Contact to Schmalz

| Attribute | Value |
|--------------------------------|------------|
| Suction rate (max) | 4.767 cfm |
| Air consumption (during evac.) | 6.356 cfm |
| Vacuum (max) | -25.1 inHg |
| Product family | SMPI |

Note:

- The supply voltage for vacuum switches and solenoid valves is 24V DC
- Air consumption: At optimal operating pressure
- Hose diameter: For max. length 2 m

Spare Parts



SD 111x21x45 SMPI/SCPI

Part no. 10.02.02.03904

Silencer for vacuum generators

Length L: 111 mm

Width B: 21 mm

Height H: 45 mm

for: Compact ejectors SMPI/SCPI

Accessories



ASK B-M12-5 5000

Part no. 21.04.05.00080

Connection cable

Interface Connection cable:

Fem connect M12, 5 pol

Cable length: 5000 mm

Material: PUR-Cable



ASV SMPI/SCPI 3xS-M12-4

Part no. 10.02.02.03372

Connection distributor

for: Ejector SMPI/SCPI

Interface Connection cable:

Fem connect M12, 5 pol

Interface Connection cable:

3xConnect M12, 4 pol

Length L: 1075 mm



ASV SMPI/SCPI 2xS-M12-4

Part no. 10.02.02.03490

Connection distributor

for: Ejector SMPI/SCPI

Interface Connection cable:

Fem connect M12, 5 pol

Interface Connection cable:

2xConnect M12, 4 pol

Length L: 1050 mm



GP 2 SMP 15..30/SCP 20..30

Part no. 10.02.02.00917

Compressed-air distributor for use as a manifold and for building ejector blocks

Number of connections: 2

Length L: 78 mm

Width B: 38 mm

Height H: 49.5 mm

for: SMP 15..30/SCP 20..30



GP 3 SMP 15..25/SCP 20..25

Part no. 10.02.02.00918

Compressed-air distributor for use as a manifold and for building ejector blocks

Number of connections: 3

Length L: 101 mm

Width B: 38 mm

Height H: 49.5 mm

for: SMP 15..25/SCP 20..25



GP 4 SMP 15..20/SCP 20

Part no. 10.02.02.00919

Compressed-air distributor for use as a manifold and for building ejector blocks

Number of connections: 4

Length L: 124 mm

Width B: 38 mm

Height H: 49.5 mm

for: SMP 15..20/SCP 20



GP 5 SMP 15

Part no. 10.02.02.00920

Compressed-air distributor for use as a manifold and for building ejector blocks

Number of connections: 5

Length L: 147 mm

Width B: 38 mm

Height H: 49.5 mm

for: SMP 15



GP 6 SMP 15

Part no. 10.02.02.00921

Compressed-air distributor for use as a manifold and for building ejector blocks

Number of connections: 6

Length L: 170 mm

Width B: 38 mm

Height H: 49.5 mm

for: SMP 15



EJEK-PL SMP(i)15..30/SCP(i)20..30

Part no. 10.02.02.00728

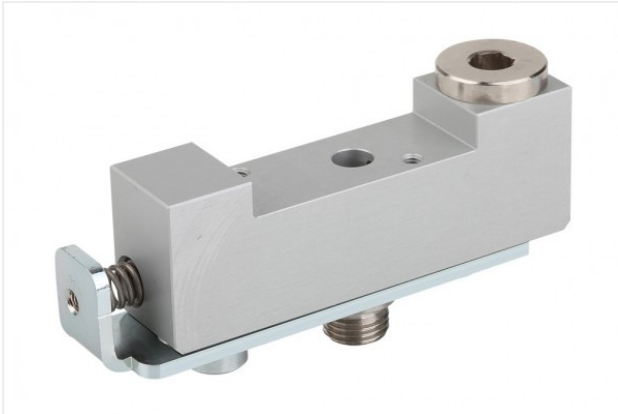
Ejector blanking plate

Length: 38 mm

Width: 22 mm

Height: 8 mm

for: SMP(i) 15..30/SCP(i) 20..30



ADP-Q 90.5x22x29.7 SMPi/SCPi

Part no. 10.02.02.03463

Baseplate for the construction of ejector blocks

Length L: 90.5 mm

Width B: 22 mm

Height H: 29.7 mm

Number of connections: 1

for: Compact ejectors SMPi/SCPi



EJEK-TEST SMPi/SCPi

Part no. 10.02.02.03588

Ejector tester

for: Compact ejectors SMPi/SCPi