

Compact ejector SMPI 15 IMP VD M12-5

<https://www.schmalz.com/10.02.02.03338>



Part no.: 10.02.02.03338

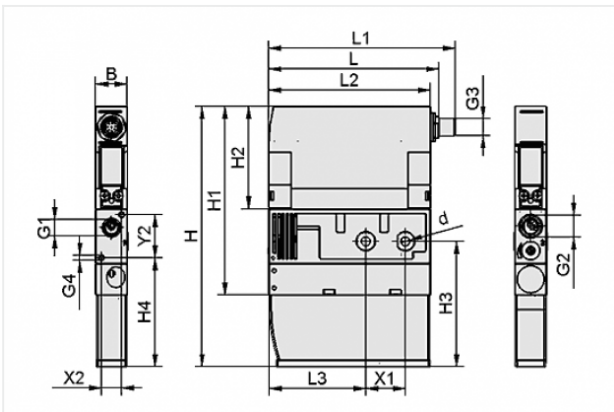
Homepage > Vacuum Technology for Automation > Vacuum Components > Vacuum Generators > Compact Ejectors > Compact Ejectors SCPI / SMPI > SMPI 15 IMP VD M12-5

Compact ejector MEGA PUMP with power blow-off function



Nozzle size: 1,5 mm
 Suction rate (max): 75 l/min
 Air consumption (during evac.):
 115 l/min
 Noise level (free): 75 dB
 at operating press.: 4.0 ... 7.0 bar
 Vacuum (max): -850 mbar
 Control: Double pilot valve
 with: digital vacuum switch
 Electrical connection:
 Male connect M12, 5 pol
 Protection: IP 65

Design Data



Attribute	Value
B	22 mm
d	6.6 mm
G1	G1/4"-F
G2	G3/8"-F
G3	M12x1-M
G4	M4-F
H	181.5 mm
H1	131.5 mm
H2	71.5 mm
H3	87.5 mm
H4	76 mm

Contact to Schmalz

J. Schmalz GmbH | Johannes-Schmalz-Straße, 72293 Glatten, Deutschland | +49 7443 2403-102 | customercenter@schmalz.de

Attribute	Value
L	118.5 mm
L1	129.7 mm
L2	112.5 mm
L3	67.5 mm
X1	27.5 mm
X2	14 mm
Y2	30 mm

Technical Data

Attribute	Value
Nozzle diameter	1.5 mm
Degree of evacuation	85 %
Suction rate (max)	4.5 m ³ /h
Suction rate (max)	75 l/min
Air consumption (during evac.)	7.2 m ³ /h
Air consumption (during evac.)	115 l/min
Air consumption (blow off) (max)	200 l/min
Noise level (free)	75 dB
Pressure range (operating pressure)	4.0 ... 7.0 bar
Int. hose diameter (recom.) comp.-air	6 mm
Int. hose diameter (recom.) vacuum side	6 mm
Control	Double pilot valve
Weight	0.56 kg
Ambient temperature	0 ... 50 °C
Pressure range (operating pressure)	58.0 ... 101.5 psi

Contact to Schmalz

Attribute	Value
Suction rate (max)	2.648 cfm
Air consumption (during evac.)	4.061 cfm
Vacuum (max)	-25.1 inHg
Product family	SMPI

Note:

- The supply voltage for vacuum switches and solenoid valves is 24V DC
- Air consumption: At optimal operating pressure
- Hose diameter: For max. length 2 m

Spare Parts



SD 111x21x45 SMPI/SCPI

Part no. 10.02.02.03904

Silencer for vacuum generators

Length L: 111 mm

Width B: 21 mm

Height H: 45 mm

for: Compact ejectors SMPI/SCPI

Accessories



ASK B-M12-5 5000

Part no. 21.04.05.00080

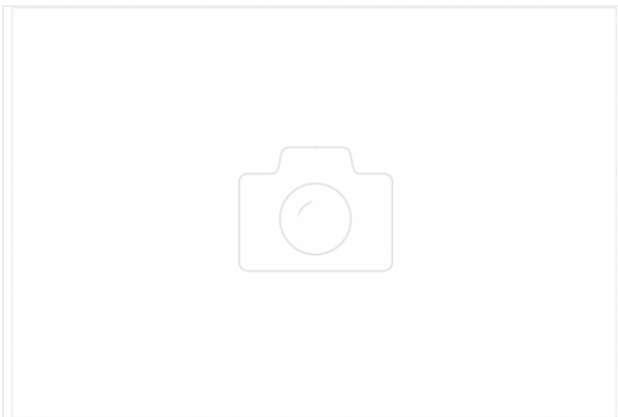
Connection cable

Interface Connection cable:

Fem connect M12, 5 pol

Cable length: 5000 mm

Material: PUR-Cable



ASV SMPI/SCPI 3xS-M12-4

Part no. 10.02.02.03372

Connection distributor

for: Ejector SMPI/SCPI

Interface Connection cable:

Fem connect M12, 5 pol

Interface Connection cable:

3xConnect M12, 4 pol

Length L: 1075 mm



ASV SMPI/SCPI 2xS-M12-4

Part no. 10.02.02.03490

Connection distributor

for: Ejector SMPI/SCPI

Interface Connection cable:

Fem connect M12, 5 pol

Interface Connection cable:

2xConnect M12, 4 pol

Length L: 1050 mm



GP 2 SMP 15..30/SCP 20..30

Part no. 10.02.02.00917

Compressed-air distributor for use as a manifold and for building ejector blocks

Number of connections: 2

Length L: 78 mm

Width B: 38 mm

Height H: 49.5 mm

for: SMP 15..30/SCP 20..30



GP 3 SMP 15..25/SCP 20..25

Part no. 10.02.02.00918

Compressed-air distributor for use as a manifold and for building ejector blocks

Number of connections: 3

Length L: 101 mm

Width B: 38 mm

Height H: 49.5 mm

for: SMP 15..25/SCP 20..25



GP 4 SMP 15..20/SCP 20

Part no. 10.02.02.00919

Compressed-air distributor for use as a manifold and for building ejector blocks

Number of connections: 4

Length L: 124 mm

Width B: 38 mm

Height H: 49.5 mm

for: SMP 15..20/SCP 20



GP 5 SMP 15

Part no. 10.02.02.00920

Compressed-air distributor for use as a manifold and for building ejector blocks

Number of connections: 5

Length L: 147 mm

Width B: 38 mm

Height H: 49.5 mm

for: SMP 15



GP 6 SMP 15

Part no. 10.02.02.00921

Compressed-air distributor for use as a manifold and for building ejector blocks

Number of connections: 6

Length L: 170 mm

Width B: 38 mm

Height H: 49.5 mm

for: SMP 15



EJEK-PL SMP(i)15..30/SCP(i)20..30

Part no. 10.02.02.00728

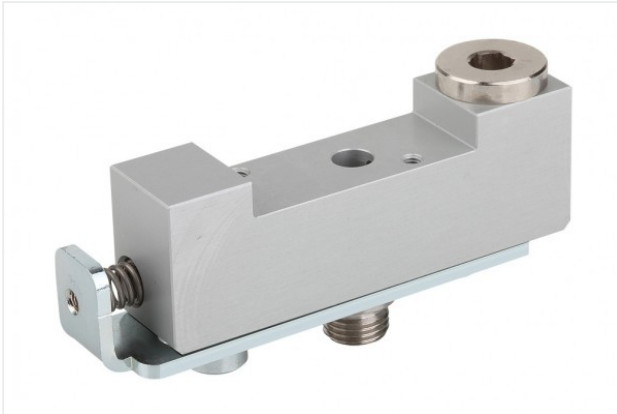
Ejector blanking plate

Length: 38 mm

Width: 22 mm

Height: 8 mm

for: SMP(i) 15..30/SCP(i) 20..30



ADP-Q 90.5x22x29.7 SMPi/SCPi

Part no. 10.02.02.03463

Baseplate for the construction of ejector blocks

Length L: 90.5 mm

Width B: 22 mm

Height H: 29.7 mm

Number of connections: 1

for: Compact ejectors SMPi/SCPi



EJEK-TEST SMPi/SCPi

Part no. 10.02.02.03588

Ejector tester

for: Compact ejectors SMPi/SCPi