

Compressed-air connection plate

GP 3 SMP 15..25/SCP 20..25

<https://www.schmalz.com/10.02.02.00918>



Part no.: 10.02.02.00918

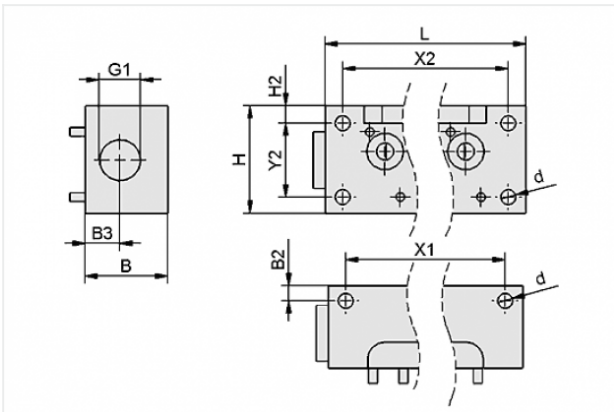
Homepage > Vacuum Technology for Automation > Vacuum Components > Vacuum Generators > Compact Ejectors > GP 3 SMP 15..25/SCP 20..25

Compressed-air distributor for use as a manifold and for building ejector blocks



Number of connections: 3
 Length L: 101 mm
 Width B: 38 mm
 Height H: 49.5 mm
 for: SMP 15..25/SCP 20..25

Design Data



Attribute	Value
B	38 mm
B2	7 mm
B3	16 mm
d	7 mm
G1	G1/2"-F
H	49.5 mm
H2	8 mm
L	101 mm
X1	85 mm
X2	85 mm
Y2	34 mm

Contact to Schmalz

J. Schmalz GmbH | Johannes-Schmalz-Straße, 72293 Glatten, Deutschland | +49 7443 2403-102 | customercenter@schmalz.de

Technical Data

Attribute	Value
Weight	481 g

Spare Parts



O-RING 14x1.5 NBR-70

Part no. 10.07.08.00150

O-ring

Internal diameter d: 14 mm

Cord diameter: 1.5 mm

Material: Nitrile rubber NBR

Material hardness: 70 °Sh



EJEK-PL SMP(i)15..30/SCP(i)20..30

Part no. 10.02.02.00728

Ejector blanking plate

Length: 38 mm

Width: 22 mm

Height: 8 mm

for: SMP(i) 15..30/SCP(i) 20..30