

# Compressed-air connection plate

## GP 2 SMP 15..30/SCP 20..30

Part no.: 10.02.02.00917

<https://www.schmalz.com/10.02.02.00917>



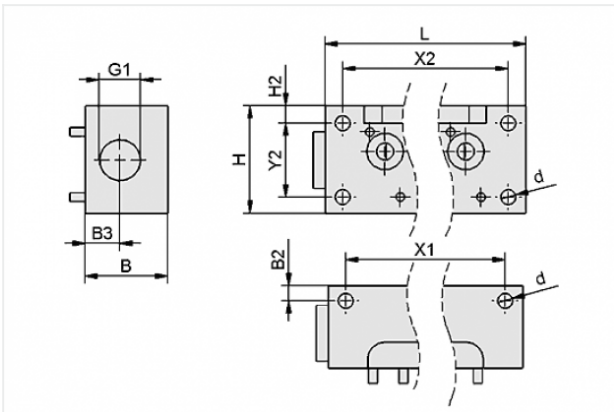
Homepage > Vacuum Technology for Automation > Vacuum Components > Vacuum Generators > Compact Ejectors > GP 2 SMP 15..30/SCP 20..30

### Compressed-air distributor for use as a manifold and for building ejector blocks



Number of connections: 2  
 Length L: 78 mm  
 Width B: 38 mm  
 Height H: 49.5 mm  
 for: SMP 15..30/SCP 20..30

#### Design Data



Attribute	Value
B	38 mm
B2	7 mm
B3	16 mm
d	7 mm
G1	G1/2"-F
H	49.5 mm
H2	8 mm
L	78 mm
X1	62 mm
X2	62 mm
Y2	34 mm

#### Contact to Schmalz

J. Schmalz GmbH | Johannes-Schmalz-Straße, 72293 Glatten, Deutschland | +49 7443 2403-102 | [customercenter@schmalz.de](mailto:customercenter@schmalz.de)

## Technical Data

Attribute	Value
Weight	375 g

## Spare Parts



### **O-RING 14x1.5 NBR-70**

Part no. 10.07.08.00150

O-ring

Internal diameter d: 14 mm

Cord diameter: 1.5 mm

Material: Nitrile rubber NBR

Material hardness: 70 °Sh



### **EJEK-PL SMP(i)15..30/SCP(i)20..30**

Part no. 10.02.02.00728

Ejector blanking plate

Length: 38 mm

Width: 22 mm

Height: 8 mm

for: SMP(i) 15..30/SCP(i) 20..30