

# Basic ejector

## SBP-C 07 S01 NC AI

<https://www.schmalz.com/10.02.01.00588>



Part no.: 10.02.01.00588

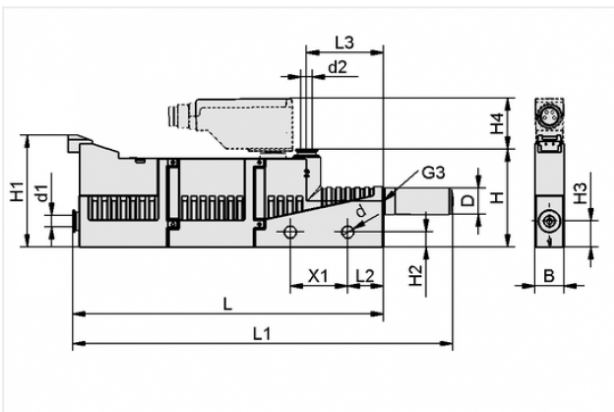
Homepage > Vacuum Technology for Automation > Vacuum Components > Vacuum Generators > Basic Ejectors > Basic Ejectors SBP-C with Additional Functions > SBP-C 07 S01 NC AI

### Basic ejector BASE PUMP-controlled with very light construction



Nozzle size: 0,7 mm  
 Connection: Hose D4(1)-D4(2)  
 Pressure optimal: 5.4 bar  
 Suction rate (max): 16 l/min  
 Air consumption (during evac.):  
 24 l/min  
 Control: Normally closed  
 Shape: With blow-off system

### Design Data



Attribute	Value
B	10 mm
d	4.2 mm
d1	4 mm
d2	4 mm
D	9 mm
G3	M5-F
H	34 mm
H1	39 mm
H2	5.2 mm
H3	9 mm
L	108 mm
L1	132 mm
L2	12.5 mm

### Contact to Schmalz

J. Schmalz GmbH | Johannes-Schmalz-Straße, 72293 Glatten, Deutschland | +49 7443 2403-102 | [customercenter@schmalz.de](mailto:customercenter@schmalz.de)

Attribute	Value
L3	27 mm
X1	20 mm

## Technical Data

Attribute	Value
Nozzle diameter	0.7 mm
Degree of evacuation	85 %
Suction rate (max)	1 m <sup>3</sup> /h
Suction rate (max)	16 l/min
Air consumption (during evac.)	1.4 m <sup>3</sup> /h
Air consumption (during evac.)	24 l/min
Noise level (free)	65 dB
Noise level (workp. gripped)	59 dB
Pressure range (operating pressure)	3.0 ... 6.0 bar
Pressure optimal	5.4 bar
Int. hose diameter (recom.) comp.-air	2 mm
Int. hose diameter (recom.) vacuum side	2 mm
Weight	35 g
Ambient temperature	0 ... 50 °C
Pressure range (operating pressure)	43.5 ... 87.0 psi
Pressure optimal	78.3 psi
Suction rate (max)	0.565 cfm
Air consumption (during evac.)	0.847 cfm

### Note:

- The supply voltage for vacuum switches and solenoid valves is 24 VDC
- Air consumption: On version with solenoid valves SBP-C 07 (24) / SBP-C 25 (320) and optimal operating pressure

### Contact to Schmalz

- Hose diameter: For max. length 2 m

## Spare Parts



### **SD M5-AG 9x24**

Part no. 10.02.01.00539

Silencer for vacuum generators

Thread G1: M5-M

External diameter D: 9 mm

Length L: 24 mm

## Accessories



### **BEF-PL 111.1x45x3 SBP**

Part no. 10.02.01.00511

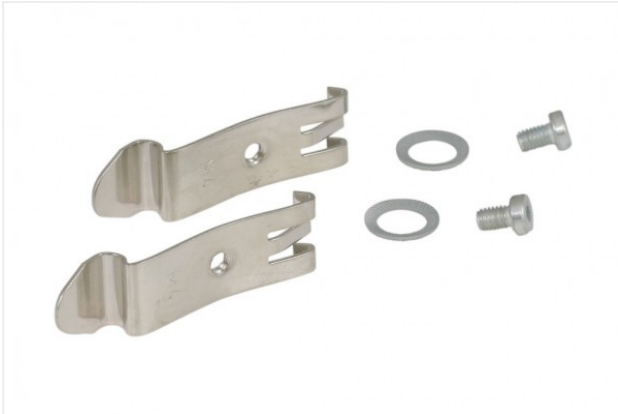
Mounting plate

Length L: 111.1 mm

Width B: 45 mm

Height H: 3 mm

for: Basic ejectors SBP



**SET SBP M4-IG**

Part no. 10.02.01.00769

Mounting set

for: Basic ejectors SBP

Type: M4-IG



**ASK B-MIC10 3000 K-2P**

Part no. 21.04.06.00086

Connection cable

Interface Connection cable:

Connect. 10mm

Cable length: 3000 mm

Interface Connection cable: Cable 2

Material: PUR-Cable