

Attribute	Value
L4	12.5 mm
LG1	9 mm
LG2	10 mm
SW1	17 mm
SW2	19 mm
X1	20 mm

Technical Data

Attribute	Value
Nozzle diameter	2.5 mm
Degree of evacuation	85 %
Suction rate (max)	12.9 m ³ /h
Suction rate (max)	215 l/min
Air consumption (during evac.)	18.7 m ³ /h
Air consumption (during evac.)	311 l/min
Noise level (free)	78 dB
Noise level (workp. gripped)	70 dB
Pressure range (operating pressure)	3.0 ... 6.0 bar
Pressure optimal	4.5 bar
Int. hose diameter (recom.) comp.-air	6 mm
Int. hose diameter (recom.) vacuum side	7 mm
Weight	50 g
Ambient temperature	0 ... 60 °C
Pressure range (operating pressure)	43.5 ... 87.0 psi
Pressure optimal	65.2 psi

Contact to Schmalz

Attribute	Value
Suction rate (max)	7.592 cfm
Air consumption (during evac.)	10.982 cfm

Note:

- Air consumption: At optimal operating pressure
- Hose diameter: For max. length 2 m

Spare Parts

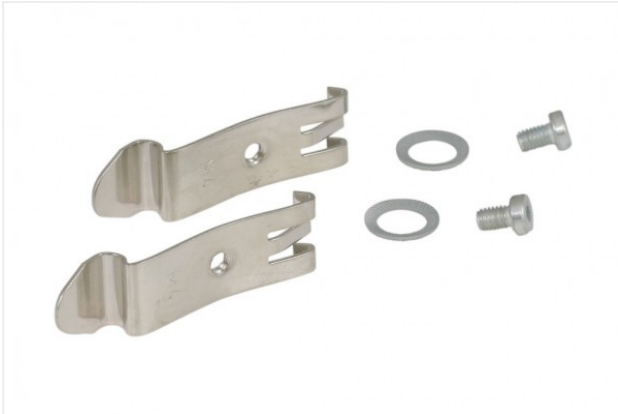


SD G3/8-AG 20x76 SBP
 Part no. 10.02.01.00719
 Silencer for vacuum generators
 Thread G1: G3/8-M
 External diameter D: 20 mm
 Length L: 76 mm
 for: Basic ejectors SBP

Accessories



BEF-PL 111.1x45x3 SBP
 Part no. 10.02.01.00511
 Mounting plate
 Length L: 111.1 mm
 Width B: 45 mm
 Height H: 3 mm
 for: Basic ejectors SBP



SET SBP M4-IG

Part no. 10.02.01.00769

Mounting set

for: Basic ejectors SBP

Type: M4-IG