

Attribute	Value
L4	12.5 mm
LG1	5 mm
LG2	5 mm
SW1	8 mm
SW2	8 mm
X1	20 mm

Technical Data

Attribute	Value
Nozzle diameter	0.5 mm
Degree of evacuation	85 %
Suction rate (max)	0.5 m ³ /h
Suction rate (max)	8 l/min
Air consumption (during evac.)	0.8 m ³ /h
Air consumption (during evac.)	13.5 l/min
Noise level (free)	58 dB
Noise level (workp. gripped)	53 dB
Pressure range (operating pressure)	3.0 ... 6.0 bar
Pressure optimal	4.5 bar
Int. hose diameter (recom.) comp.-air	2 mm
Int. hose diameter (recom.) vacuum side	2 mm
Weight	7.5 g
Ambient temperature	0 ... 60 °C
Pressure range (operating pressure)	43.5 ... 87.0 psi
Pressure optimal	65.2 psi

Contact to Schmalz

Attribute	Value
Suction rate (max)	0.282 cfm
Air consumption (during evac.)	0.476 cfm

Note:

- Air consumption: At optimal operating pressure
- Hose diameter: For max. length 2 m

Spare Parts



SD M5-AG 9x24

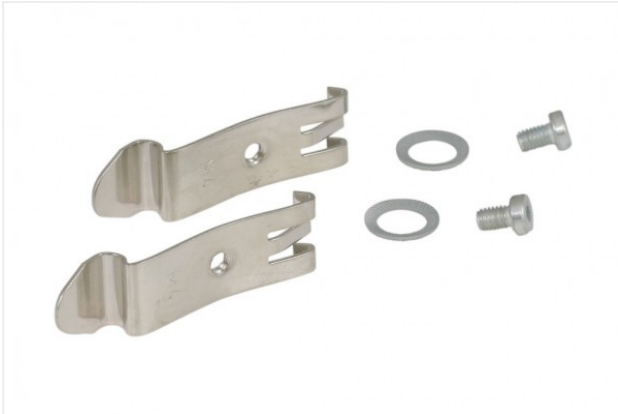
Part no. 10.02.01.00539
 Silencer for vacuum generators
 Thread G1: M5-M
 External diameter D: 9 mm
 Length L: 24 mm

Accessories



BEF-PL 111.1x45x3 SBP

Part no. 10.02.01.00511
 Mounting plate
 Length L: 111.1 mm
 Width B: 45 mm
 Height H: 3 mm
 for: Basic ejectors SBP



SET SBP M4-IG

Part no. 10.02.01.00769

Mounting set

for: Basic ejectors SBP

Type: M4-IG