

# Basic ejector SEG 30 LS SDA

<https://www.schmalz.com/10.02.01.00118>



Part no.: 10.02.01.00118

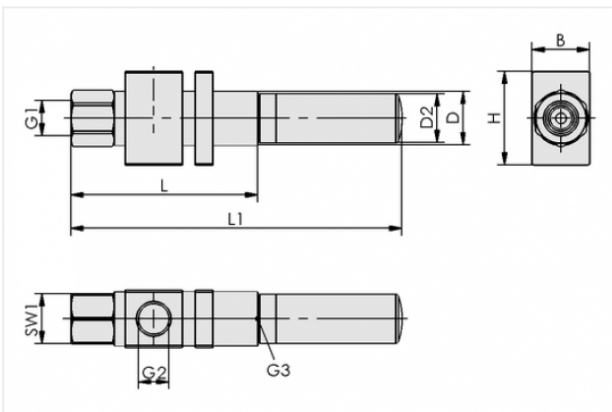
Homepage > Vacuum Technology for Automation > Vacuum Components > Vacuum Generators > Basic Ejectors > Basic Ejectors SEG > SEG 30 LS SDA

## Basic ejector with robust housing for universal use



Nozzle size: 3,0 mm  
Shape: For high suction capacity  
with: Axial silencer  
Suction rate (max): 370 l/min  
Air consumption (during evac.):  
392 l/min

## Design Data



| Attribute | Value |
|-----------|-------|
|-----------|-------|

|   |       |
|---|-------|
| B | 42 mm |
|---|-------|

|   |       |
|---|-------|
| D | 32 mm |
|---|-------|

|    |       |
|----|-------|
| D2 | 32 mm |
|----|-------|

|    |         |
|----|---------|
| G1 | G3/8"-F |
|----|---------|

|    |         |
|----|---------|
| G2 | G1/2"-F |
|----|---------|

|    |         |
|----|---------|
| G3 | G3/4"-F |
|----|---------|

|   |       |
|---|-------|
| H | 50 mm |
|---|-------|

|   |        |
|---|--------|
| L | 127 mm |
|---|--------|

|    |        |
|----|--------|
| L1 | 217 mm |
|----|--------|

|     |       |
|-----|-------|
| SW1 | 22 mm |
|-----|-------|

## Contact to Schmalz

J. Schmalz GmbH | Johannes-Schmalz-Straße, 72293 Glatten, Deutschland | +49 7443 2403-102 | [customercenter@schmalz.de](mailto:customercenter@schmalz.de)

## Technical Data

| Attribute                               | Value                  |
|---|------------------------|
| Nozzle diameter                         | 3 mm                   |
| with                                    | Axial silencer         |
| Degree of evacuation                    | 55 %                   |
| Suction rate (max)                      | 370 l/min              |
| Suction rate (max)                      | 22.2 m <sup>3</sup> /h |
| Suction rate (max)                      | 13.066 cfm             |
| Air consumption (during evac.)          | 392 l/min              |
| Air consumption (during evac.)          | 23.5 m <sup>3</sup> /h |
| Air consumption (during evac.)          | 13.843 cfm             |
| Pressure range (operating pressure)     | 3.0 ... 6.0 bar        |
| Pressure range (operating pressure)     | 43.5 ... 87.0 psi      |
| Pressure optimal                        | 5 bar                  |
| Pressure optimal                        | 72.5 psi               |
| Int. hose diameter (recom.) comp.-air   | 6 mm                   |
| Int. hose diameter (recom.) vacuum side | 12 mm                  |
| Weight                                  | 404 g                  |
| Ambient temperature                     | -10 ... 80 °C          |

### Note:

- Air consumption: At optimal operating pressure
- Hose diameter: For max. length 2 m

## Spare Parts

### Contact to Schmalz



**SD G3/4-AG 31x90 SEG**

Part no. 10.02.01.00909

Silencer for vacuum generators

Thread G1: G3/4-M

External diameter D: 31 mm

Length L: 90 mm

for: Basic ejectors SEG