

Basic ejector SEG 30 HS SDA

<https://www.schmalz.com/10.02.01.00117>



Part no.: 10.02.01.00117

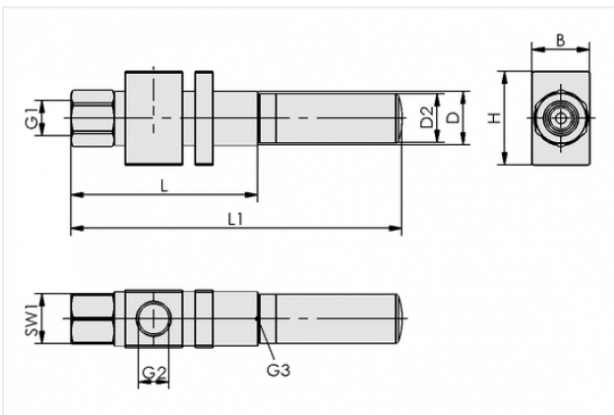
Homepage > Vacuum Technology for Automation > Vacuum Components > Vacuum Generators > Basic Ejectors > Basic Ejectors SEG > SEG 30 HS SDA

Basic ejector with robust housing for universal use



Nozzle size: 3,0 mm
Shape: For high vacuum
with: Axial silencer
Suction rate (max): 240 l/min
Air consumption (during evac.):
392 l/min

Design Data



Attribute	Value
-----------	-------

B	42 mm
---	-------

D	32 mm
---	-------

D2	32 mm
----	-------

G1	G3/8"-F
----	---------

G2	G1/2"-F
----	---------

G3	G3/4"-F
----	---------

H	50 mm
---	-------

L	127 mm
---	--------

L1	217 mm
----	--------

SW1	22 mm
-----	-------

Contact to Schmalz

J. Schmalz GmbH | Johannes-Schmalz-Straße, 72293 Glatten, Deutschland | +49 7443 2403-102 | customercenter@schmalz.de

Technical Data

Attribute	Value
Nozzle diameter	3 mm
with	Axial silencer
Degree of evacuation	85 %
Suction rate (max)	240 l/min
Suction rate (max)	14.4 m ³ /h
Suction rate (max)	8.475 cfm
Air consumption (during evac.)	392 l/min
Air consumption (during evac.)	23.5 m ³ /h
Air consumption (during evac.)	13.843 cfm
Pressure range (operating pressure)	3.0 ... 6.0 bar
Pressure range (operating pressure)	43.5 ... 87.0 psi
Pressure optimal	5 bar
Pressure optimal	72.5 psi
Int. hose diameter (recom.) comp.-air	6 mm
Int. hose diameter (recom.) vacuum side	12 mm
Weight	404 g
Ambient temperature	-10 ... 80 °C

Note:

- Air consumption: At optimal operating pressure
- Hose diameter: For max. length 2 m

Spare Parts

Contact to Schmalz



SD G3/4-AG 31x90 SEG

Part no. 10.02.01.00909

Silencer for vacuum generators

Thread G1: G3/4-M

External diameter D: 31 mm

Length L: 90 mm

for: Basic ejectors SEG