

# Basic ejector SEG 25 HS SDA

Part no.: 10.02.01.00115

<https://www.schmalz.com/10.02.01.00115>



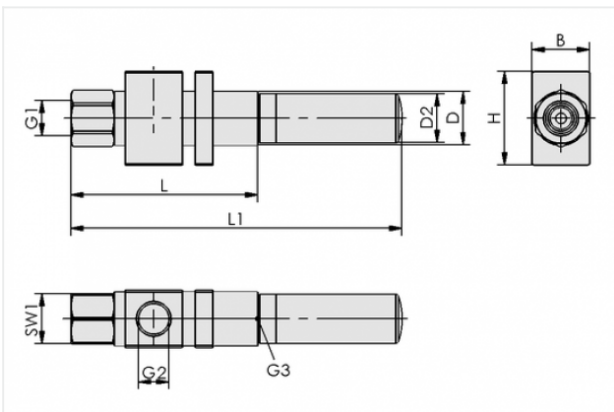
Homepage > Vacuum Technology for Automation > Vacuum Components > Vacuum Generators > Basic Ejectors > Basic Ejectors SEG > SEG 25 HS SDA

## Basic ejector with robust housing for universal use



Nozzle size: 2,5 mm  
Shape: For high vacuum  
with: Axial silencer  
Suction rate (max): 184 l/min  
Air consumption (during evac.):  
275 l/min

## Design Data



Attribute	Value
-----------	-------

B	32 mm
---	-------

D	28 mm
---	-------

D2	28 mm
----	-------

G1	G3/8"-F
----	---------

G2	G1/2"-F
----	---------

G3	G1/2"-F
----	---------

H	50 mm
---	-------

L	117 mm
---	--------

L1	180 mm
----	--------

SW1	22 mm
-----	-------

## Contact to Schmalz

J. Schmalz GmbH | Johannes-Schmalz-Straße, 72293 Glatten, Deutschland | +49 7443 2403-102 | [customercenter@schmalz.de](mailto:customercenter@schmalz.de)

## Technical Data

Attribute	Value
Nozzle diameter	2.5 mm
with	Axial silencer
Degree of evacuation	85 %
Suction rate (max)	184 l/min
Suction rate (max)	11 m <sup>3</sup> /h
Suction rate (max)	6.497 cfm
Air consumption (during evac.)	275 l/min
Air consumption (during evac.)	16.5 m <sup>3</sup> /h
Air consumption (during evac.)	9.711 cfm
Pressure range (operating pressure)	3.0 ... 6.0 bar
Pressure range (operating pressure)	43.5 ... 87.0 psi
Pressure optimal	5 bar
Pressure optimal	72.5 psi
Int. hose diameter (recom.) comp.-air	6 mm
Int. hose diameter (recom.) vacuum side	12 mm
Weight	295 g
Ambient temperature	-10 ... 80 °C

### Note:

- Air consumption: At optimal operating pressure
- Hose diameter: For max. length 2 m

## Spare Parts

### Contact to Schmalz



**SD G1/2-AG 27x63 SEG**

Part no. 10.02.01.00907

Silencer for vacuum generators

Thread G1: G1/2-M

External diameter D: 27 mm

Length L: 63 mm

for: Basic ejectors SEG