

Basic ejector SEG 15 HS SDA

Part no.: 10.02.01.00112

<https://www.schmalz.com/10.02.01.00112>



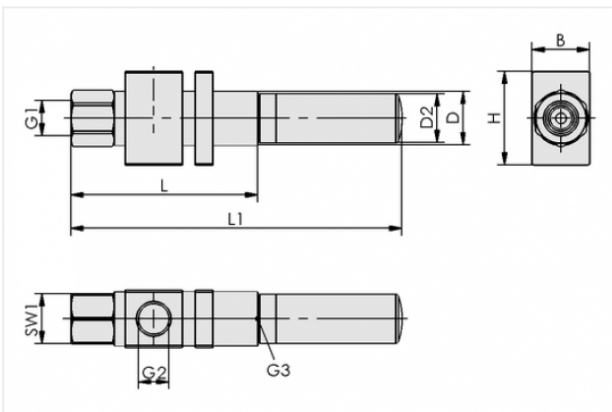
Homepage > Vacuum Technology for Automation > Vacuum Components > Vacuum Generators > Basic Ejectors > Basic Ejectors SEG > SEG 15 HS SDA

Basic ejector with robust housing for universal use



Nozzle size: 1,5 mm
Shape: For high vacuum
with: Axial silencer
Suction rate (max): 69 l/min
Air consumption (during evac.):
102 l/min

Design Data



Attribute	Value
-----------	-------

B	22 mm
---	-------

D	20 mm
---	-------

D2	20 mm
----	-------

G1	G1/4"-F
----	---------

G2	G1/4"-F
----	---------

G3	G1/4"-F
----	---------

H	38 mm
---	-------

L	75 mm
---	-------

L1	121 mm
----	--------

SW1	17 mm
-----	-------

Contact to Schmalz

J. Schmalz GmbH | Johannes-Schmalz-Straße, 72293 Glatten, Deutschland | +49 7443 2403-102 | customercenter@schmalz.de

Technical Data

Attribute	Value
Nozzle diameter	1.5 mm
with	Axial silencer
Degree of evacuation	85 %
Suction rate (max)	69 l/min
Suction rate (max)	4.1 m ³ /h
Suction rate (max)	2.436 cfm
Air consumption (during evac.)	102 l/min
Air consumption (during evac.)	6.1 m ³ /h
Air consumption (during evac.)	3.602 cfm
Pressure range (operating pressure)	3.0 ... 6.0 bar
Pressure range (operating pressure)	43.5 ... 87.0 psi
Pressure optimal	5 bar
Pressure optimal	72.5 psi
Int. hose diameter (recom.) comp.-air	4 mm
Int. hose diameter (recom.) vacuum side	6 mm
Weight	110 g
Ambient temperature	-10 ... 80 °C

Note:

- Air consumption: At optimal operating pressure
- Hose diameter: For max. length 2 m

Spare Parts

Contact to Schmalz



SD G1/4-AG 20x46 SEG

Part no. 10.02.01.00903

Silencer for vacuum generators

Thread G1: G1/4-M

External diameter D: 20 mm

Length L: 46 mm

for: Basic ejectors SEG