

# Basic ejector SEG 10 HS SDA

Part no.: 10.02.01.00111

<https://www.schmalz.com/10.02.01.00111>



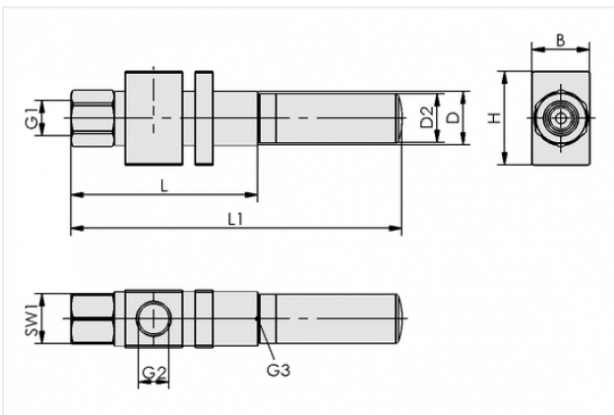
Homepage > Vacuum Technology for Automation > Vacuum Components > Vacuum Generators > Basic Ejectors > Basic Ejectors SEG > SEG 10 HS SDA

## Basic ejector with robust housing for universal use



Nozzle size: 1,0 mm  
Shape: For high vacuum  
with: Axial silencer  
Suction rate (max): 34 l/min  
Air consumption (during evac.):  
49 l/min

## Design Data



Attribute	Value
-----------	-------

B	16 mm
D	15 mm
D2	15 mm
G1	G1/8"-F
G2	G1/8"-F
G3	G1/8"-F
H	26 mm
L	57 mm
L1	97 mm
SW1	14 mm

## Contact to Schmalz

J. Schmalz GmbH | Johannes-Schmalz-Straße, 72293 Glatten, Deutschland | +49 7443 2403-102 | [customercenter@schmalz.de](mailto:customercenter@schmalz.de)

## Technical Data

Attribute	Value
Nozzle diameter	1 mm
with	Axial silencer
Degree of evacuation	85 %
Suction rate (max)	34 l/min
Suction rate (max)	2 m <sup>3</sup> /h
Suction rate (max)	1.2 cfm
Air consumption (during evac.)	49 l/min
Air consumption (during evac.)	2.9 m <sup>3</sup> /h
Air consumption (during evac.)	1.73 cfm
Pressure range (operating pressure)	3.0 ... 6.0 bar
Pressure range (operating pressure)	43.5 ... 87.0 psi
Pressure optimal	5 bar
Pressure optimal	72.5 psi
Int. hose diameter (recom.) comp.-air	2 mm
Int. hose diameter (recom.) vacuum side	4 mm
Weight	50 g
Ambient temperature	-10 ... 80 °C

### Note:

- Air consumption: At optimal operating pressure
- Hose diameter: For max. length 2 m

---

## Spare Parts

### Contact to Schmalz



**SD G1/8-AG 14x40**

Part no. 10.02.01.00540

Silencer for vacuum generators

Thread G1: G1/8-M

External diameter D: 14 mm

Length L: 40 mm