

Basic ejector SEG 07 HS SDA

<https://www.schmalz.com/10.02.01.00110>



Part no.: 10.02.01.00110

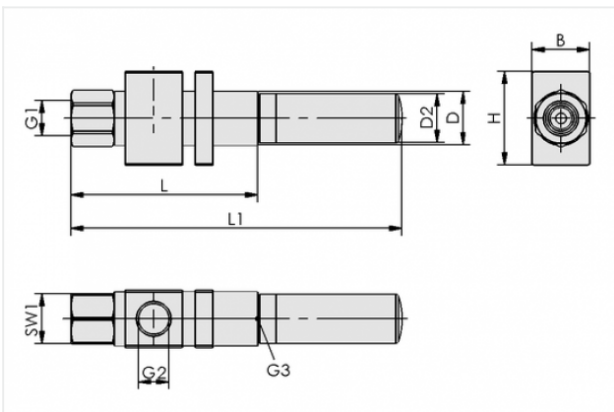
Homepage > Vacuum Technology for Automation > Vacuum Components > Vacuum Generators > Basic Ejectors > Basic Ejectors SEG > SEG 07 HS SDA

Basic ejector with robust housing for universal use



Nozzle size: 0,7 mm
Shape: For high vacuum
with: Axial silencer
Suction rate (max): 14 l/min
Air consumption (during evac.):
21 l/min

Design Data



Attribute	Value
-----------	-------

B	16 mm
D	15 mm
D2	15 mm
G1	G1/8"-F
G2	G1/8"-F
G3	G1/8"-F
H	26 mm
L	52 mm
L1	92 mm
SW1	14 mm

Contact to Schmalz

J. Schmalz GmbH | Johannes-Schmalz-Straße, 72293 Glatten, Deutschland | +49 7443 2403-102 | customercenter@schmalz.de

Technical Data

Attribute	Value
Nozzle diameter	0.7 mm
with	Axial silencer
Degree of evacuation	85 %
Suction rate (max)	14 l/min
Suction rate (max)	0.8 m ³ /h
Suction rate (max)	0.494 cfm
Air consumption (during evac.)	21 l/min
Air consumption (during evac.)	1.3 m ³ /h
Air consumption (during evac.)	0.741 cfm
Pressure range (operating pressure)	3.0 ... 6.0 bar
Pressure range (operating pressure)	43.5 ... 87.0 psi
Pressure optimal	5 bar
Pressure optimal	72.5 psi
Int. hose diameter (recom.) comp.-air	2 mm
Int. hose diameter (recom.) vacuum side	4 mm
Weight	45 g
Ambient temperature	-10 ... 80 °C

Note:

- Air consumption: At optimal operating pressure
- Hose diameter: For max. length 2 m

Spare Parts

Contact to Schmalz



SD G1/8-AG 14x40

Part no. 10.02.01.00540

Silencer for vacuum generators

Thread G1: G1/8-M

External diameter D: 14 mm

Length L: 40 mm