

Feed ejector SEC-750

Part no.: 10.02.01.00081

<https://www.schmalz.com/10.02.01.00081>



Homepage > Vacuum Technology for Automation > Vacuum Components > Special Grippers > Feed Ejectors > Feed Ejectors SEC > SEC-750

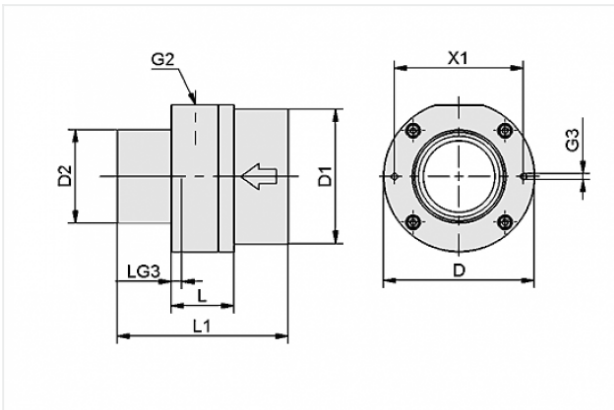
Powerful ejector for very porous parts



Nozzle size: 75 mm

Suction rate (max): 518.4 m³/h

Design Data



| Attribute | Value |
|-----------|---------|
| D | 140 mm |
| D1 | 125 mm |
| D2 | 100 mm |
| G2 | G1/2"-F |
| G3 | M6-F |
| L | 65 mm |
| L1 | 180 mm |
| LG3 | 6 mm |
| X1 | 126 mm |

Technical Data

Contact to Schmalz

J. Schmalz GmbH | Johannes-Schmalz-Straße, 72293 Glatten, Deutschland | +49 7443 2403-102 | customercenter@schmalz.de

| Attribute | Value |
|-------------------------------------|-------------------------|
| Nozzle diameter | 75 mm |
| Vacuum (max) | -5 mbar |
| Suction rate (max) | 8640 l/min |
| Suction rate (max) | 518.4 m ³ /h |
| Air consumption (during evac.) | 770 l/min |
| Air consumption (during evac.) | 46.2 m ³ /h |
| Pressure range (operating pressure) | 2.0 ... 6.0 bar |
| Ambient temperature | -20 ... 80 °C |
| Weight | 2.35 kg |
| Vacuum (max) | -0.147 inHg |
| Suction rate (max) | 305.112 cfm |
| Air consumption (during evac.) | 27.191 cfm |
| Pressure range (operating pressure) | 29.0 ... 87.0 psi |

Note:

- Air consumption: At optimal operating pressure (4,5 bar)