

# Feed ejector SEC-200 A2

Part no.: 10.02.01.01326

<https://www.schmalz.com/10.02.01.01326>



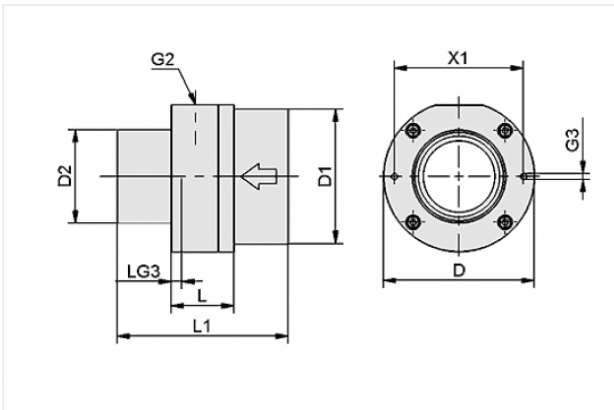
Homepage > Vacuum Technology for Automation > Vacuum Components > Special Grippers > Feed Ejectors > Feed Ejectors SEC > SEC-200 A2

## Powerful ejector for very porous parts



Nozzle size: 20 mm  
Suction rate (max): 82.5 m<sup>3</sup>/h  
Material: Stainless steel

## Design Data



Attribute	Value
D	50 mm
D1	38 mm
D2	32 mm
G2	G1/4"-F
G3	M4-F
L	30 mm
L1	90 mm
LG3	12 mm
X1	42 mm

## Technical Data

### Contact to Schmalz

J. Schmalz GmbH | Johannes-Schmalz-Straße, 72293 Glatten, Deutschland | +49 7443 2403-102 | [customercenter@schmalz.de](mailto:customercenter@schmalz.de)

<b>Attribute</b>	<b>Value</b>
Nozzle diameter	20 mm
Vacuum (max)	-85 mbar
Suction rate (max)	1375 l/min
Suction rate (max)	82.5 m <sup>3</sup> /h
Air consumption (during evac.)	290 l/min
Air consumption (during evac.)	17.4 m <sup>3</sup> /h
Pressure range (operating pressure)	2.0 ... 6.0 bar
Ambient temperature	-20 ... 80 °C
Material	Stainless steel
Weight	0.511 kg
Vacuum (max)	-2.51 inHg
Suction rate (max)	48.556 cfm
Air consumption (during evac.)	10.241 cfm
Pressure range (operating pressure)	29.0 ... 87.0 psi

**Note:**

- Air consumption: At optimal operating pressure (4,5 bar)