

# Feed ejector SEC-100 A2

Part no.: 10.02.01.01691

<https://www.schmalz.com/10.02.01.01691>



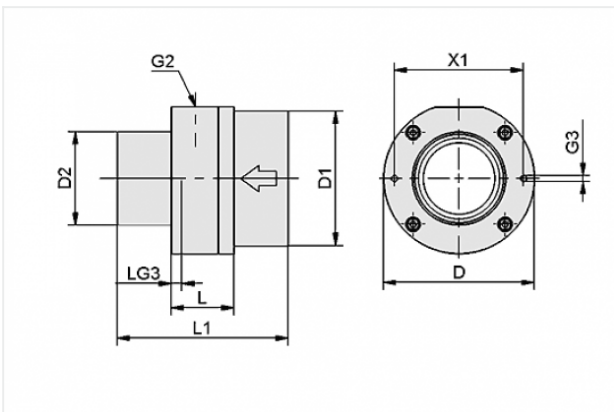
Homepage > Vacuum Technology for Automation > Vacuum Components > Special Grippers > Feed Ejectors > Feed Ejectors SEC > SEC-100 A2

## Powerful ejector for very porous parts



Nozzle size: 10 mm  
Suction rate (max): 36.6 m<sup>3</sup>/h  
Material: Stainless steel

## Design Data



Attribute	Value
D	37 mm
D1	19 mm
D2	19 mm
G2	G1/8"-F
G3	M4-F
L	21 mm
L1	70 mm
LG3	8 mm
X1	29 mm

## Technical Data

### Contact to Schmalz

J. Schmalz GmbH | Johannes-Schmalz-Straße, 72293 Glatten, Deutschland | +49 7443 2403-102 | [customercenter@schmalz.de](mailto:customercenter@schmalz.de)

Attribute	Value
Nozzle diameter	10 mm
Vacuum (max)	-185 mbar
Suction rate (max)	610 l/min
Suction rate (max)	36.6 m <sup>3</sup> /h
Air consumption (during evac.)	135 l/min
Air consumption (during evac.)	8.1 m <sup>3</sup> /h
Pressure range (operating pressure)	2.0 ... 6.0 bar
Ambient temperature	-20 ... 80 °C
Material	Stainless steel
Weight	0.206 kg
Vacuum (max)	-5.463 inHg
Suction rate (max)	21.541 cfm
Air consumption (during evac.)	4.767 cfm
Pressure range (operating pressure)	29.0 ... 87.0 psi

**Note:**

- Air consumption: At optimal operating pressure (4,5 bar)