

Feed ejector SEC-100

Part no.: 10.02.01.00078

<https://www.schmalz.com/10.02.01.00078>



Homepage > Vacuum Technology for Automation > Vacuum Components > Special Grippers > Feed Ejectors > Feed Ejectors SEC > SEC-100

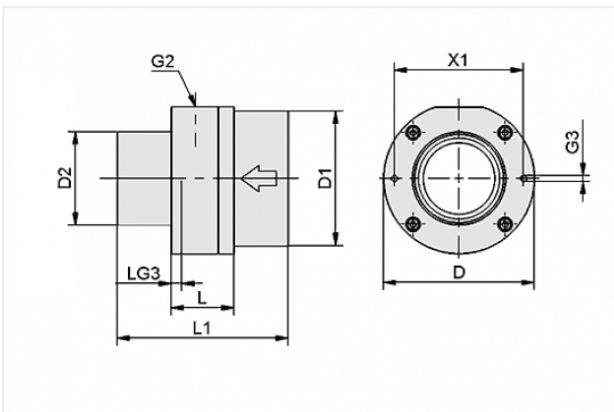
Powerful ejector for very porous parts



Nozzle size: 10 mm

Suction rate (max): 36.6 m³/h

Design Data



Attribute	Value
-----------	-------

D	37 mm
---	-------

D1	19 mm
----	-------

D2	19 mm
----	-------

G2	G1/8"-F
----	---------

G3	M4-F
----	------

L	21 mm
---	-------

L1	70 mm
----	-------

LG3	8 mm
-----	------

X1	29 mm
----	-------

Technical Data

Contact to Schmalz

J. Schmalz GmbH | Johannes-Schmalz-Straße, 72293 Glatten, Deutschland | +49 7443 2403-102 | customercenter@schmalz.de

Attribute	Value
Nozzle diameter	10 mm
Vacuum (max)	-185 mbar
Suction rate (max)	610 l/min
Suction rate (max)	36.6 m ³ /h
Air consumption (during evac.)	135 l/min
Air consumption (during evac.)	8.1 m ³ /h
Pressure range (operating pressure)	2.0 ... 6.0 bar
Ambient temperature	-20 ... 80 °C
Weight	0.07 kg
Vacuum (max)	-5.463 inHg
Suction rate (max)	21.541 cfm
Air consumption (during evac.)	4.767 cfm
Pressure range (operating pressure)	29.0 ... 87.0 psi

Note:

- Air consumption: At optimal operating pressure (4,5 bar)