

# Feed ejector SEC-60

<https://www.schmalz.com/10.02.01.01079>



Part no.: 10.02.01.01079

Homepage > Vacuum Technology for Automation > Vacuum Components > Special Grippers > Feed Ejectors > Feed Ejectors SEC > SEC-60

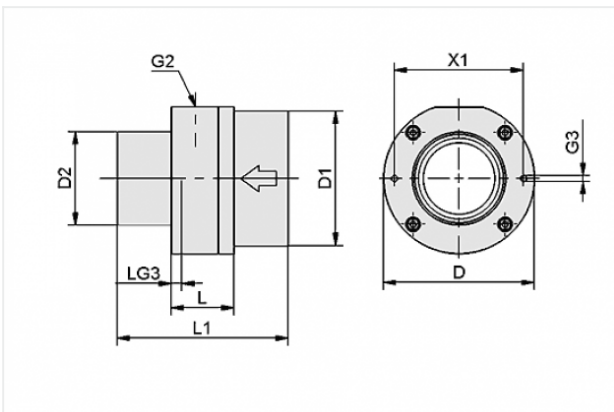
## Powerful ejector for very porous parts



Nozzle size: 6,0 mm

Suction rate (max): 12.9 m<sup>3</sup>/h

## Design Data



Attribute	Value
-----------	-------

D	32 mm
---	-------

D1	12.5 mm
----	---------

D2	12.5 mm
----	---------

G2	M5-F
----	------

G3	M3-F
----	------

L	14 mm
---	-------

L1	44 mm
----	-------

LG3	5 mm
-----	------

X1	25 mm
----	-------

## Technical Data

### Contact to Schmalz

J. Schmalz GmbH | Johannes-Schmalz-Straße, 72293 Glatten, Deutschland | +49 7443 2403-102 | [customercenter@schmalz.de](mailto:customercenter@schmalz.de)

Attribute	Value
Nozzle diameter	6 mm
Vacuum (max)	-245 mbar
Suction rate (max)	215 l/min
Suction rate (max)	12.9 m <sup>3</sup> /h
Air consumption (during evac.)	110 l/min
Air consumption (during evac.)	6.6 m <sup>3</sup> /h
Pressure range (operating pressure)	2.0 ... 5.0 bar
Ambient temperature	-20 ... 80 °C
Weight	0.04 kg
Vacuum (max)	-7.234 inHg
Suction rate (max)	7.592 cfm
Air consumption (during evac.)	3.884 cfm
Pressure range (operating pressure)	29.0 ... 72.5 psi

**Note:**

- Air consumption: At optimal operating pressure (4,5 bar)