

# Supporting frame

## ST-RAHM 75x36 1

Part no.: 10.01.06.02279

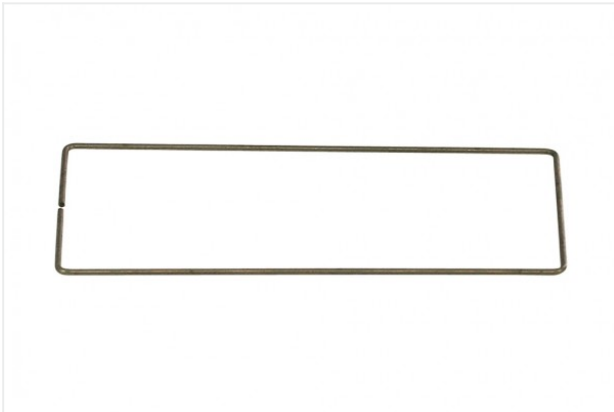
<https://www.schmalz.com/10.01.06.02279>



Homepage > Vacuum Technology for Automation > Vacuum Components > Vacuum Suction Cups > Suction Cups for Packaging > ST-RAHM 75x36

1

## Supporting frame

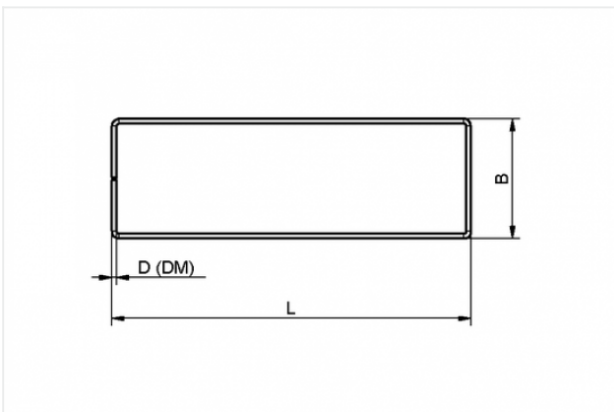


Length L: 75 mm

Width B: 36 mm

Diameter: 1 mm

## Design Data



| Attribute | Value |
|-----------|-------|
|-----------|-------|

|   |       |
|---|-------|
| B | 36 mm |
|---|-------|

|        |      |
|--------|------|
| D (DM) | 1 mm |
|--------|------|

|   |       |
|---|-------|
| L | 75 mm |
|---|-------|

## Technical Data

| Attribute | Value |
|-----------|-------|
|-----------|-------|

|          |                       |
|----------|-----------------------|
| Material | Spring steel X10 CrNi |
|----------|-----------------------|

|        |       |
|--------|-------|
| Weight | 1.3 g |
|--------|-------|

### Contact to Schmalz

J. Schmalz GmbH | Johannes-Schmalz-Straße, 72293 Glatten, Deutschland | +49 7443 2403-102 | [customercenter@schmalz.de](mailto:customercenter@schmalz.de)



---

---

[Contact to Schmalz](#)

J. Schmalz GmbH | Johannes-Schmalz-Straße, 72293 Glatten, Deutschland | +49 7443 2403-102 |  
customercenter@schmalz.de