

Bellows suction cup (rectangular)

<https://www.schmalz.com/10.01.06.02288>

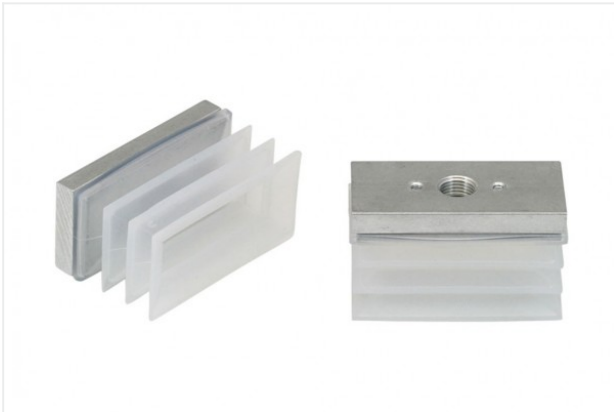


FSGB-R 52x25 SI-50 G1/8-IG

Part no.: 10.01.06.02288

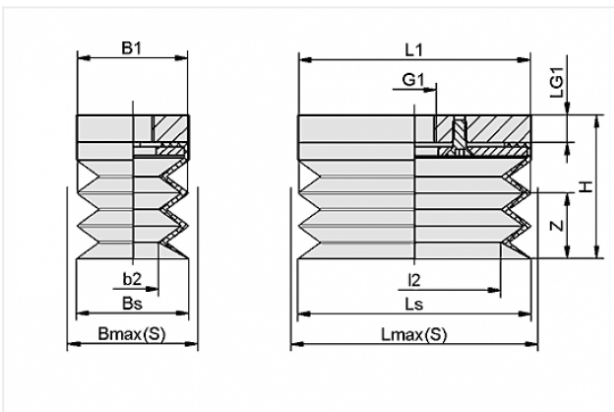
Homepage > Vacuum Technology for Automation > Vacuum Components > Vacuum Suction Cups > Suction Cups for Packaging > Bellows Suction Cups FSGB-R (Rectangular) > FSGB-R 52x25 SI-50 G1/8-IG

Bellows suction cup (rectangular)



Dimensions (LxB): 52 x 25 mm
Suction cup material: Silicone SI
Material hardness: 50 °Sh
Number of folds: 2.5
Nipple material: Aluminium
Vacuum connection: G1/8-F

Design Data



Attribute	Value
-----------	-------

b2	10 mm
B1	25 mm
Bmax(S)	27.5 mm
Bs	25 mm
G1	G1/8"-F
H	32 mm
l2	37 mm
L1	52 mm
LG1	6 mm
Lmax(S)	54.5 mm
Ls	52 mm
Z	15 mm

Contact to Schmalz

J. Schmalz GmbH | Johannes-Schmalz-Straße, 72293 Glatten, Deutschland | +49 7443 2403-102 | customercenter@schmalz.de

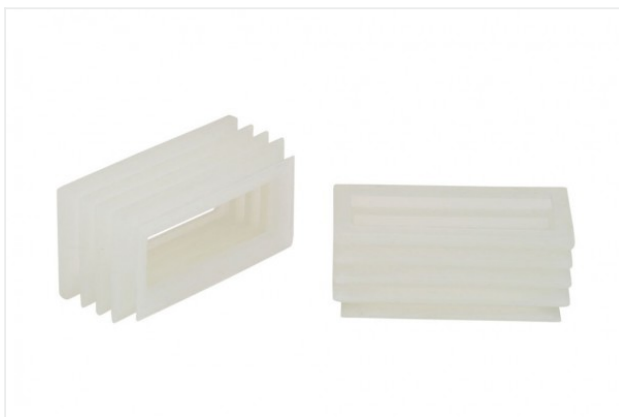
Technical Data

Attribute	Value
Suction force	20 N
Volume	16 cm ³
Curve radius (min) (convex)	10 mm
Internal hose diameter (recom.)	6 mm
Dimensions (LxB)	52 x 25 mm
Number of folds	2.5
Suction cup material	Silicone SI
Material hardness	50 °Sh
Weight	34 g
Product family	FSGB-R

Note:

- Suction force: The specified suction forces are theoretical values at a vacuum of -0.6 bar and with a smooth, dry workpiece surface - they do not include a safety factor
- Hose diameter: The recommended hose diameter refers to a hose length of approx. 2 m

Spare Parts



FGB-R 52x25 SI-50

Part no. 10.01.06.01116

Bellows suction cup (rectangular)

Dimensions (LxB): 52 x 25 mm

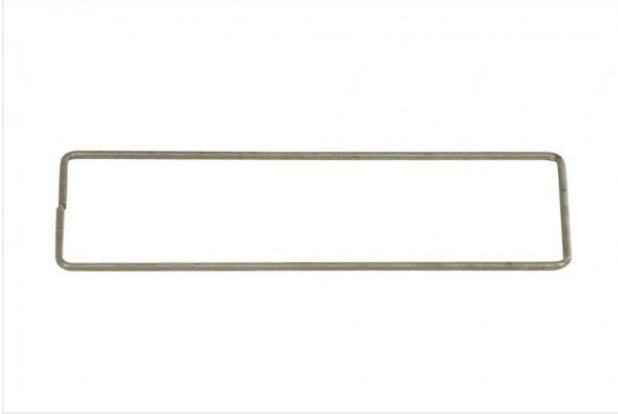
Suction cup material: Silicone SI

Material hardness: 50 °Sh

Number of folds: 2.5

Contact to Schmalz

Accessories



ST-RAHM 50x23 1

Part no. 10.01.06.02276

Supporting frame

Length L: 50 mm

Width B: 23 mm

Diameter: 1 mm