

# Bellows suction cup (oval)

<https://www.schmalz.com/10.01.06.02461>



## SPOB1 100x40 ED-65 SC050

Part no.: 10.01.06.02461

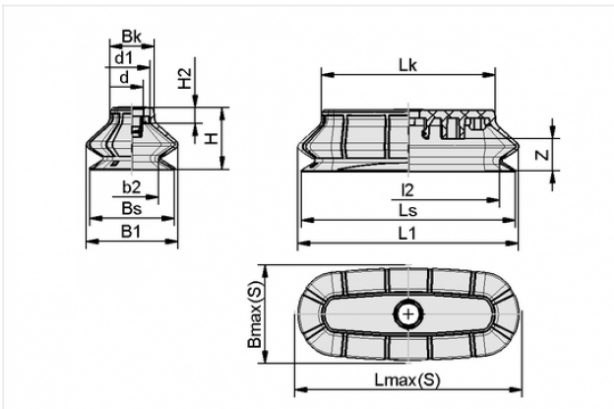
Homepage > Vacuum Technology for Automation > Vacuum Components > Vacuum Suction Cups > Suction Cups for Packaging > SPOB1 100x40 ED-65 SC050

### Bellows suction cup (oval) with 1.5 corrug.for dynamic handling of cardboard and rigid packaging



Dimensions (LxB): 100 x 40 mm  
Suction cup material: Elastodur  
Material hardness: 65 °Sh  
Number of folds: 1.5

#### Design Data



| Attribute | Value |
|-----------|-------|
|-----------|-------|

|    |         |
|----|---------|
| b2 | 25.9 mm |
|----|---------|

|    |         |
|----|---------|
| B1 | 44.6 mm |
|----|---------|

|    |         |
|----|---------|
| Bk | 21.6 mm |
|----|---------|

|         |       |
|---------|-------|
| Bmax(S) | 52 mm |
|---------|-------|

|    |         |
|----|---------|
| Bs | 41.4 mm |
|----|---------|

|   |       |
|---|-------|
| d | 11 mm |
|---|-------|

|    |         |
|----|---------|
| d1 | 17.5 mm |
|----|---------|

|   |       |
|---|-------|
| H | 30 mm |
|---|-------|

|    |      |
|----|------|
| H2 | 7 mm |
|----|------|

|    |         |
|----|---------|
| L2 | 88.9 mm |
|----|---------|

|    |          |
|----|----------|
| L1 | 107.6 mm |
|----|----------|

|    |         |
|----|---------|
| Lk | 84.6 mm |
|----|---------|

#### Contact to Schmalz

J. Schmalz GmbH | Johannes-Schmalz-Straße, 72293 Glatten, Deutschland | +49 7443 2403-102 | [customercenter@schmalz.de](mailto:customercenter@schmalz.de)

| Attribute | Value    |
|-----------|----------|
| Lmax(S)   | 113 mm   |
| Ls        | 104.4 mm |
| Z         | 16 mm    |

## Technical Data

| Attribute                       | Value                |
|---------------------------------|----------------------|
| Suction force                   | 111.2 N              |
| Pull-off force                  | 131.4 N              |
| Lateral force                   | 76.9 N               |
| Volume                          | 60.1 cm <sup>3</sup> |
| Curve radius (min) (convex)     | 50 mm                |
| Internal hose diameter (recom.) | 6 mm                 |
| Dimensions (LxB)                | 100 x 40 mm          |
| Nipple                          | SC 050               |
| Number of folds                 | 1.5                  |
| Suction cup material            | Elastodur            |
| Material hardness               | 65 °Sh               |
| Weight                          | 23.5 g               |
| Product family                  | SPOB1                |