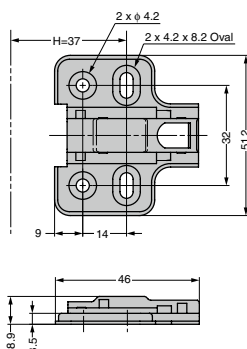


STAINLESS STEEL MOUNTING PLATE **180SUS-P6T**Latest
Info

• Mounting Plate for 180SUS Concealed Hinge.

SUS

Specifications

- Door Adjustment Function (± 2 mm up/down)
- Thickness: 0 mm (Standard Thickness)
- Passed the in-house neutral salt spray test, meeting the 480-hour corrosion resistance standard in accordance with ISO 9227 (equivalent to DIN EN 1670).

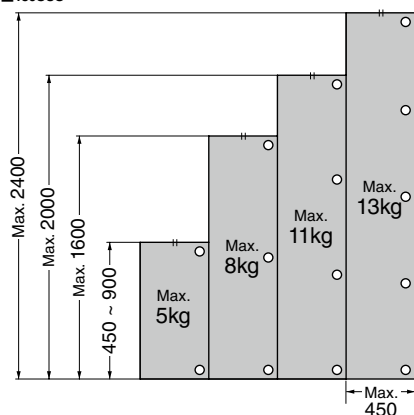
RoHS	CAD	Item Code	Item Name	Material	Finish	Weight (g)	Carton
-	2030	160-056-880	180SUS-P6T	Stainless Steel (SUS304)	Barrel Polishing	15	400

Door size and recommended hinge quantity

The number of hinges mounted varies according to the door dimensions. For doors of the same weight, a larger distance between the upper and lower hinges will enhance strength.

Generally, when using 3 hinges, the intermediate hinge should be a little higher than the centre point between the upper and lower hinges for enhanced strength. Note: Use the figure only as a guideline.

■ 180SUS



Door Width	Door Thickness	Installation Pitch
Max. 450	Max. 20	Min. 300

Caution

- Set door centre of gravity at door centre.
- If you want to increase the door width, please increase the number of hinges accordingly.
- Attach the upper and lower hinges within 100 mm from the edge of the door. When using three or more, install at regular intervals.
- Figures shown in the diagram are only indicative. Please always test before finalising your design.
- Please contact us for any other configuration.
- All screw holes should be used.