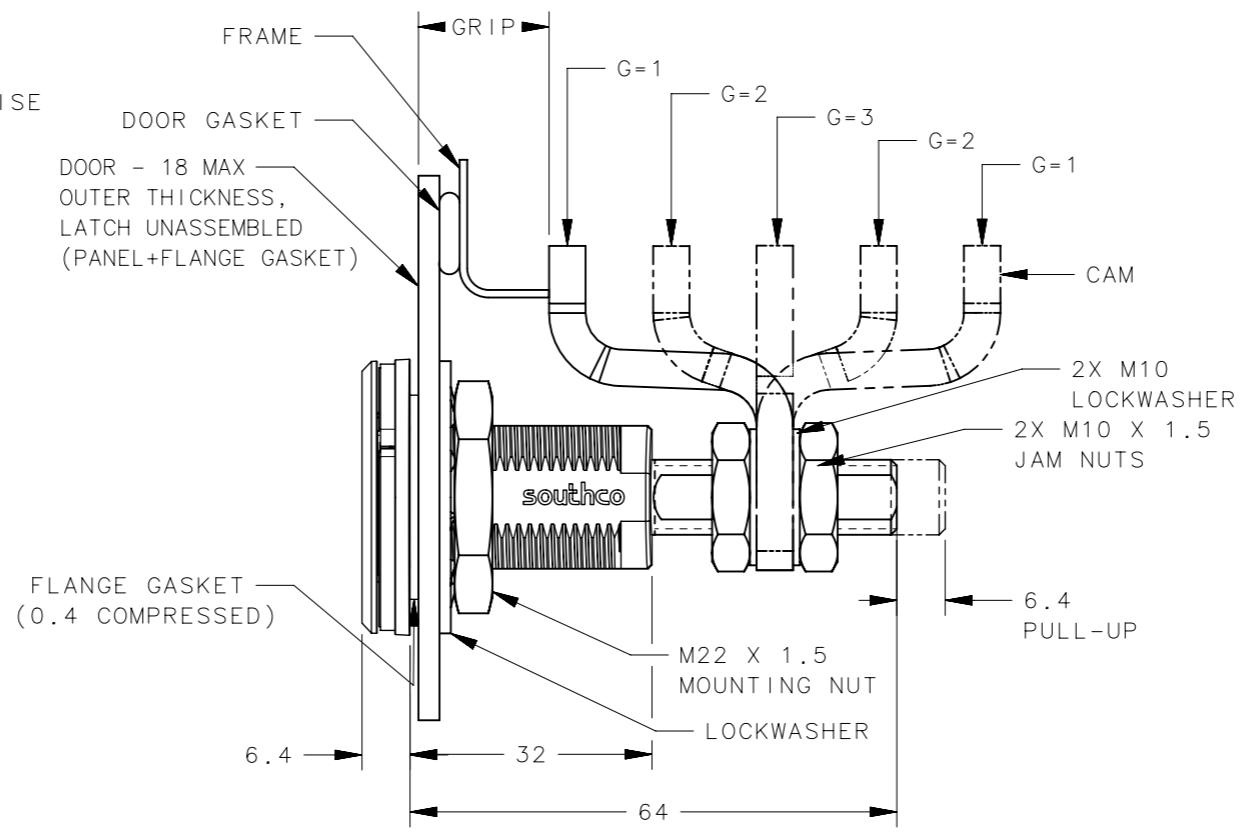
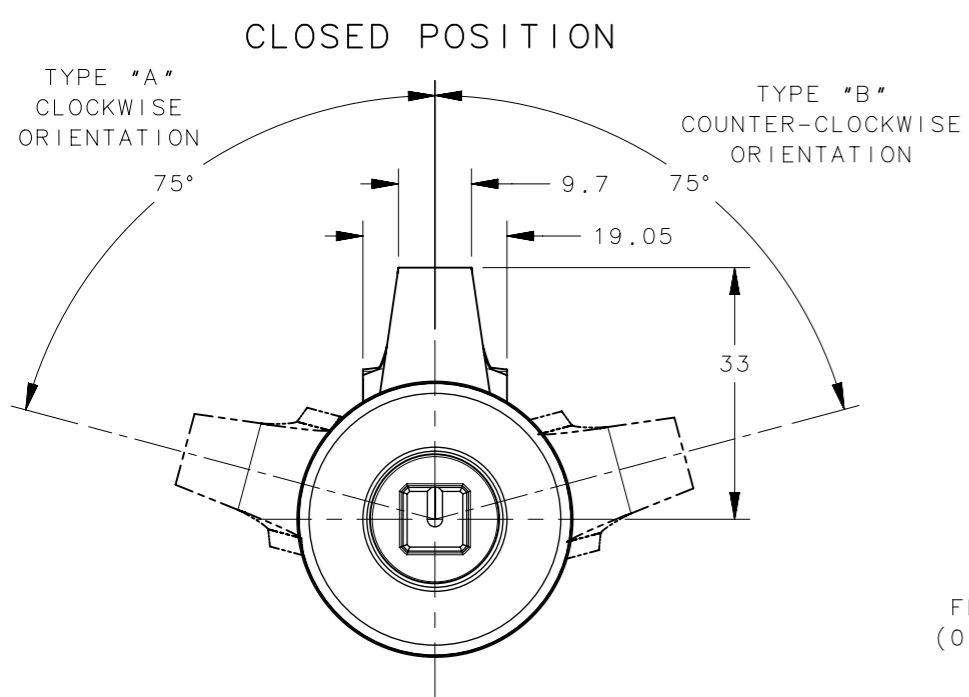
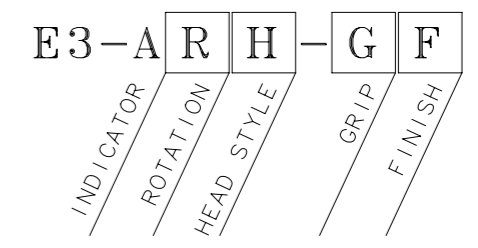


REVISION HISTORY			
REV	DATE	BY	DESCRIPTION
B	13JAN2020	BVH/MJS	PRN: P2020-1163

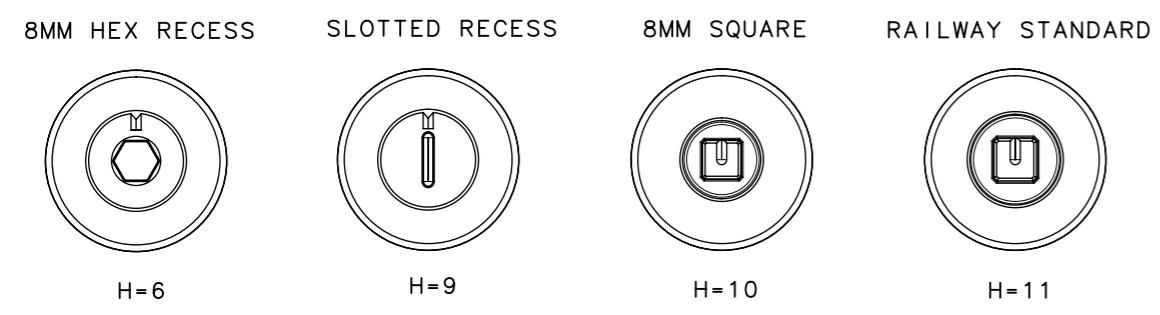


STANDARD PART NUMBER



- R = ACTUATION STYLE**
- 1 = TYPE A CLOCKWISE TO LATCH LATCH UNASSEMBLED
 - 22 = TYPE B COUNTER-CLOCKWISE TO LATCH LATCH UNASSEMBLED
- G = GRIP**
- 0 = NO CAM
 - 1 = DEEP OFFSET CAM (27.4 OFFSET)
 - 2 = OFFSET CAM (13.7 OFFSET)
 - 3 = STRAIGHT CAM (NO OFFSET)
- F = FINISH**
- 2 = MIM ELECTROPOLISHED
- FOR PANEL PREPRATION SEE SHEET#2.

H = HEAD STYLE
SCALE 2:3



GRIP RANGE			
GRIP STYLE (G)	1 (DEEP OFFSET CAM)	2 (OFFSET CAM)	3 (STRAIGHT CAM)
CAM PART NUMBER	E3-28-201-24	E3-28-202-24	E3-28-203-24
CAM ORIENTATION - FORWARD	11.4 - 27.2	25.4 - 44.1	38.9 - 54.6
CAM ORIENTATION - REVERSE	66.3 - 76.2	52.6 - 68.3	
MAX OUTER DOOR THICKNESS	18	18	18

H - HEAD STYLE	KEY PART NUMBER
8MM HEX RECESS	NOT SUPPLIED BY SOUTHCO
SLOTTED RECESS	NOT SUPPLIED BY SOUTHCO
8MM SQUARE	E3-8-1
RAILWAY STANDARD	E3-14-1

- NOTES**
- OPERATION: 195° TURN OF DRIVER CAUSES CAM TO ROTATE AND PULL UP AS SHOWN. SEE SHEET 2 FOR DETAILED WING INDICATOR OPERATION DESCRIPTION.
 - DETERMINE TOTAL GRIP BY ADDING:
MAX. OUTER DOOR THICKNESS (INCLUDE ALL ACCESSORIES)
PLUS COMPRESSED FRAME GASKET AND FRAME THICKNESS.
 - INSTALLATION:
A. INSERT LATCH INTO HOLE IN DOOR. CHECK FOR PROPER ORIENTATION AND OPERATION USING CAM.
B. INSTALL USING LOCKWASHER AND MOUNTING NUT (M22). RECOMMENDED TORQUE 20 Nm.
C. INSTALL JAM NUT, LOCKWASHER, CAM, LOCKWASHER AND JAM NUT ON SHAFT.
ADJUST JAM NUTS TO POSITION CAM AT CORRECT GRIP (WITH LATCH CLOSED).
TIGHTEN JAM NUTS (20 Nm MAX TORQUE) USING TWO 17mm WRENCHES.
 - CAUTION: ADJUST CAM SO NO MORE THAN 7.9Nm TORQUE IS REQUIRED TO CLOSE LATCH.

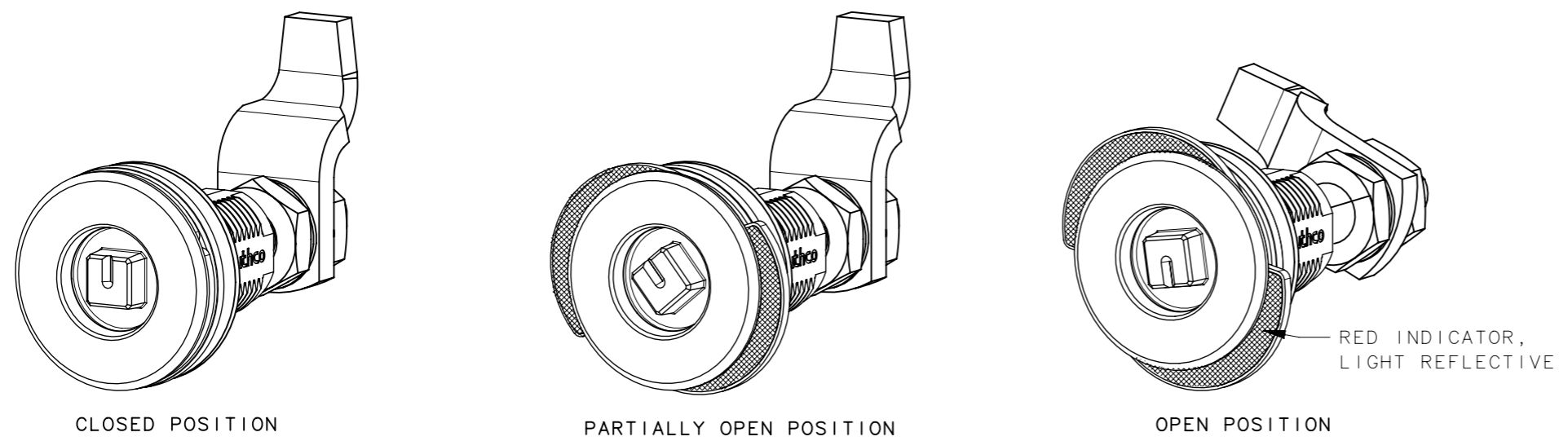
COMPONENT	MATERIAL	FINISH
HOUSING	STAINLESS STEEL	ELECTROPOLISHED
CAP	STAINLESS STEEL	ELECTROPOLISHED
INDICATOR ASSEMBLY	-	-
O-RING, ANTI VIBRATION	NITRILE RUBBER	BLACK
O-RING	NITRILE RUBBER	BLACK
RETAINER RING	STAINLESS STEEL	NATURAL
SPRING	STAINLESS STEEL	NATURAL
SLEEVE	STAINLESS STEEL	PASSIVATED
CAM	STEEL	GEOMET PLUS SEALER
SHAFT	STAINLESS STEEL	PASSIVATED
PIN	STEEL	ZINC PLATE
WASHER	STAINLESS STEEL	PASSIVATED
M10 HEX NUT	STAINLESS STEEL	PASSIVATED
M22 HEX NUT	STAINLESS STEEL	NATURAL
M22 LOCKWASHER	STAINLESS STEEL	PASSIVATED
PAWL	STAINLESS STEEL	PASSIVATED
GASKET	NEOPRENE	BLACK

CPB NUMBER 2017-0409	THIRD ANGLE PROJECTION	 CONNECT • CREATE • INNOVATE
SURFACE AREA	MILLIMETERS [IN]	
VOLUME	TOLERANCES UNLESS OTHERWISE NOTED	DESCRIPTION E3 WITH INDICATOR, MIM, ADJUSTABLE GRIP
PROPRIETARY ITEM <small>EXCEPT FOR USES EXPRESSLY GRANTED IN WRITING, INFORMATION DISCLOSED HEREON IS CONFIDENTIAL AND ALL RIGHTS, PATENT AND OTHERWISE, ARE RESERVED BY SOUTHCO, INC.</small>	ALL DIMENSIONS WITHOUT TOLERANCES ARE FOR REFERENCE ONLY.	SIZE A3 SYSTEM NX DWG NO. J-E3-12-18
	PER ASME Y14.5M-1994	DRAWN BY DKM/DMS DATE 04MAR2019 SCALE 1:1 SHEET 1 OF 2

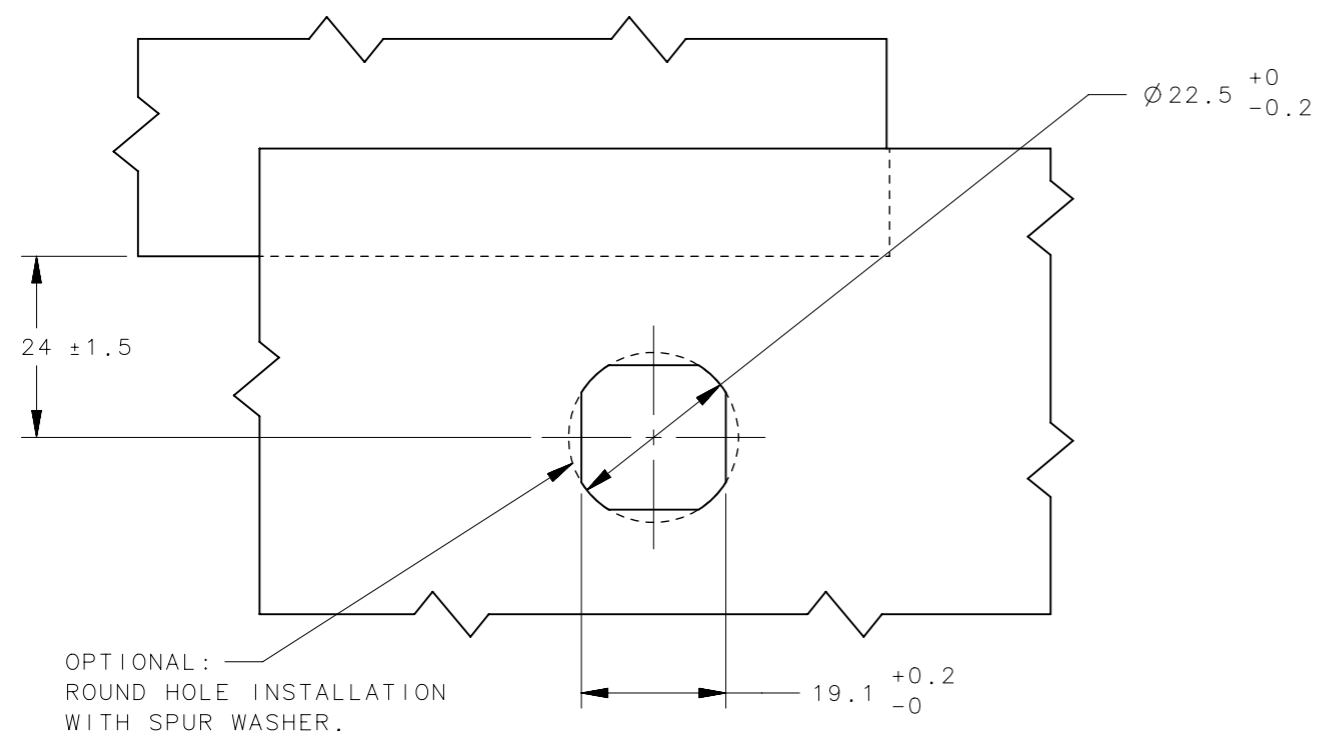
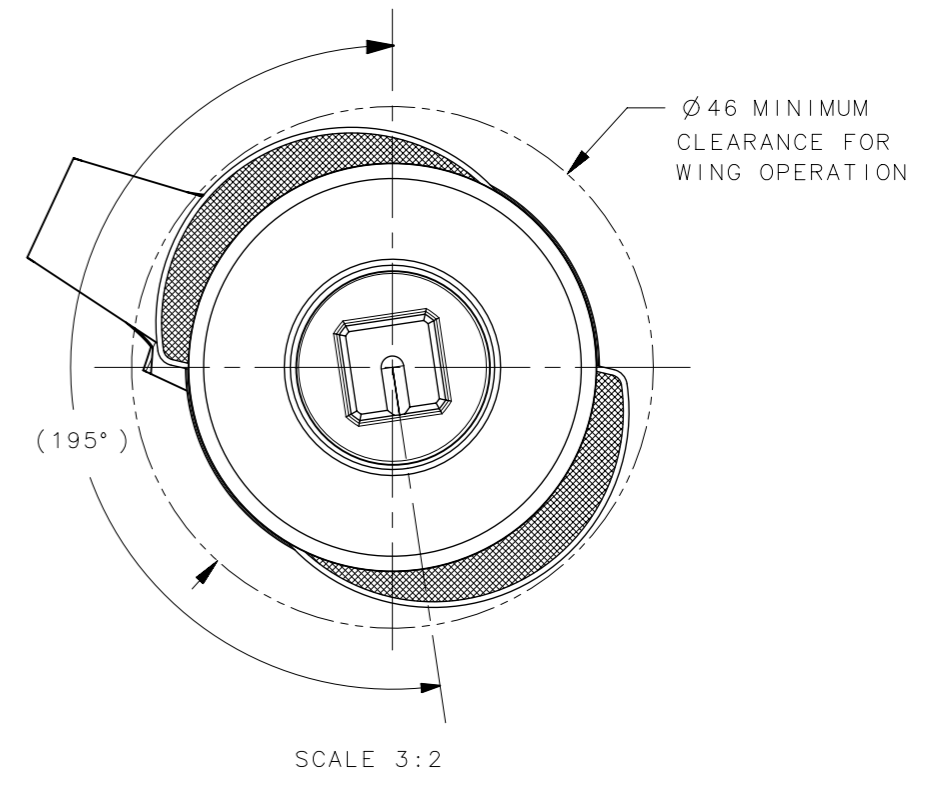
REVISION HISTORY			
REV	DATE	BY	DESCRIPTION
B	22JUN2020	BVH/MJS	PRN: P2020-1163

VISUAL INDICATOR OPERATION

TYPE "A" VERSION SHOWN




INDICATOR WING MOTION
 -REFERENCE ONLY-
 0° (LATCHED POSITION) TO 20° - INDICATORS FULLY RETRACTED.
 20° - 40° (PARTIALLY OPEN POSITION) - INDICATORS MOVE FROM FULLY RETRACTED TO FULLY OPEN.
 40° TO 195° (OPEN POSITION) - INDICATORS FULLY EXTENDED.



OPTIONAL: ROUND HOLE INSTALLATION WITH SPUR WASHER.

PANEL PREPRATION

CPB NUMBER 2017-0409	THIRD ANGLE PROJECTION	
SURFACE AREA	MILLIMETERS [IN]	
VOLUME	TOLERANCES UNLESS OTHERWISE NOTED	DESCRIPTION E3 WITH INDICATOR, MIM, ADJUSTABLE GRIP
PROPRIETARY ITEM <small>EXCEPT FOR USES EXPRESSLY GRANTED IN WRITING, INFORMATION DISCLOSED HEREON IS CONFIDENTIAL AND ALL RIGHTS, PATENT AND OTHERWISE, ARE RESERVED BY SOUTHCO, INC.</small>	ALL DIMENSIONS WITHOUT TOLERANCES ARE FOR REFERENCE ONLY.	SIZE A3
PER ASME Y14.5M-1994	DRAWN BY DKM/DMS	DATE 04MAR2019
		DWG NO. J-E3-12-18
		SCALE NTS
		SHEET 2 OF 2