

REVISION HISTORY			
REV	DATE	BY	DESCRIPTION
D	12APR2022	GEA/MBT	PRN: P2022-0680

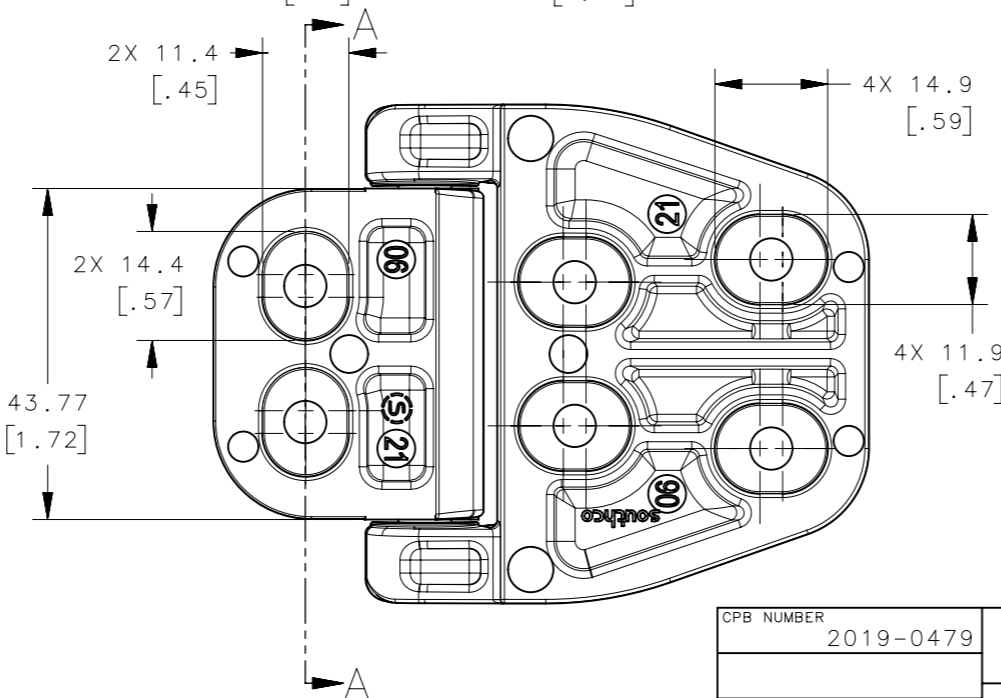
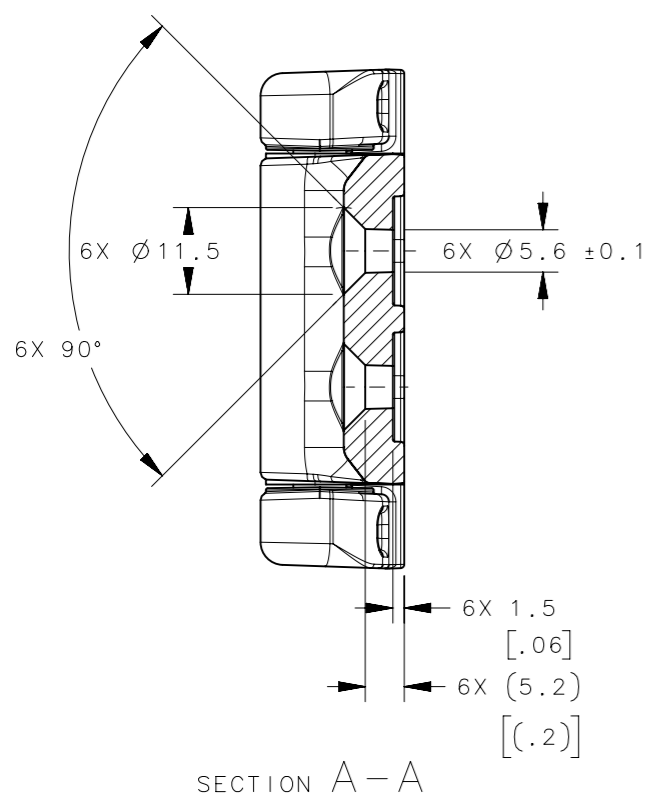
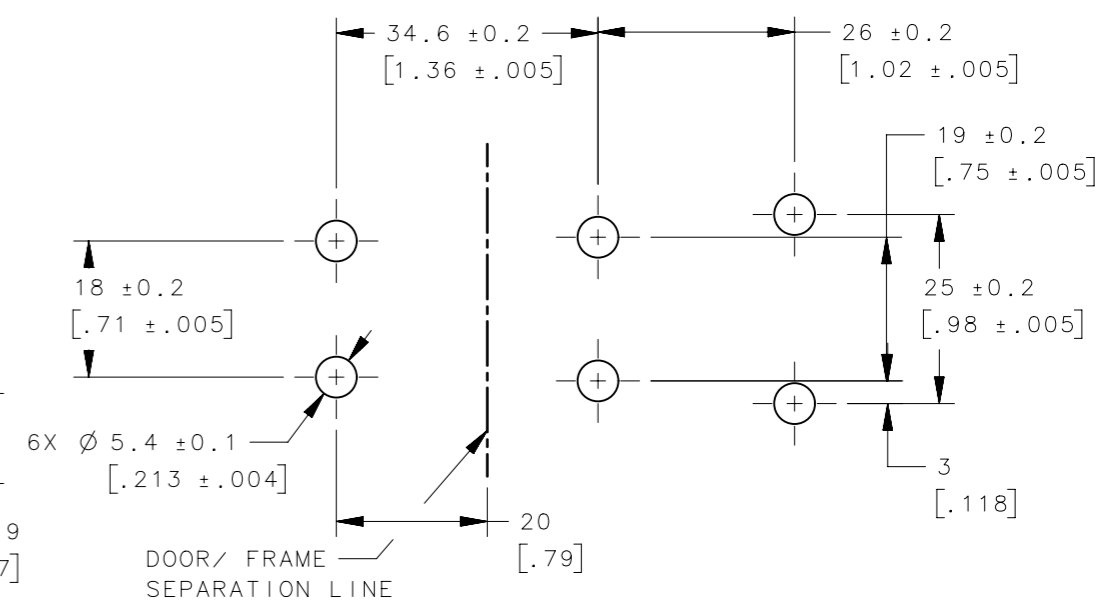
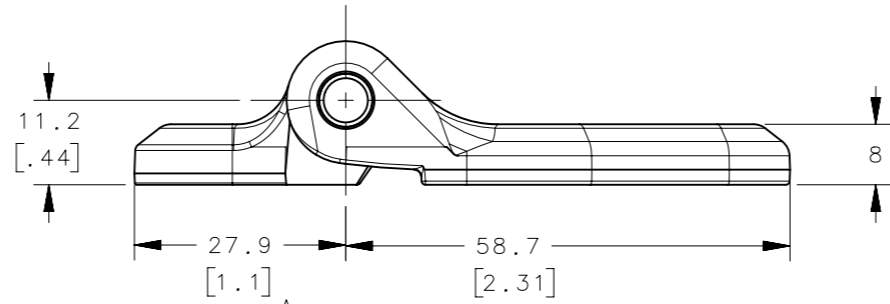
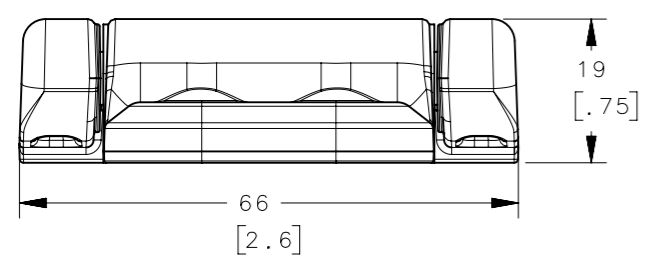
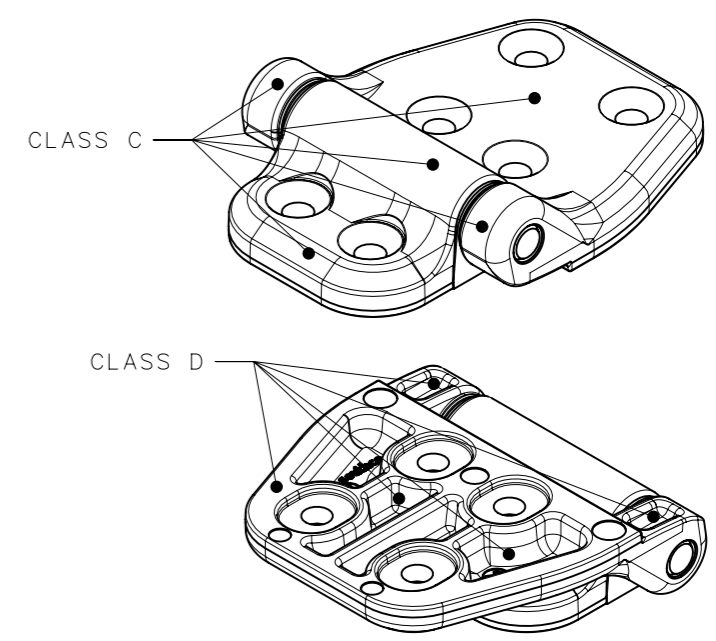
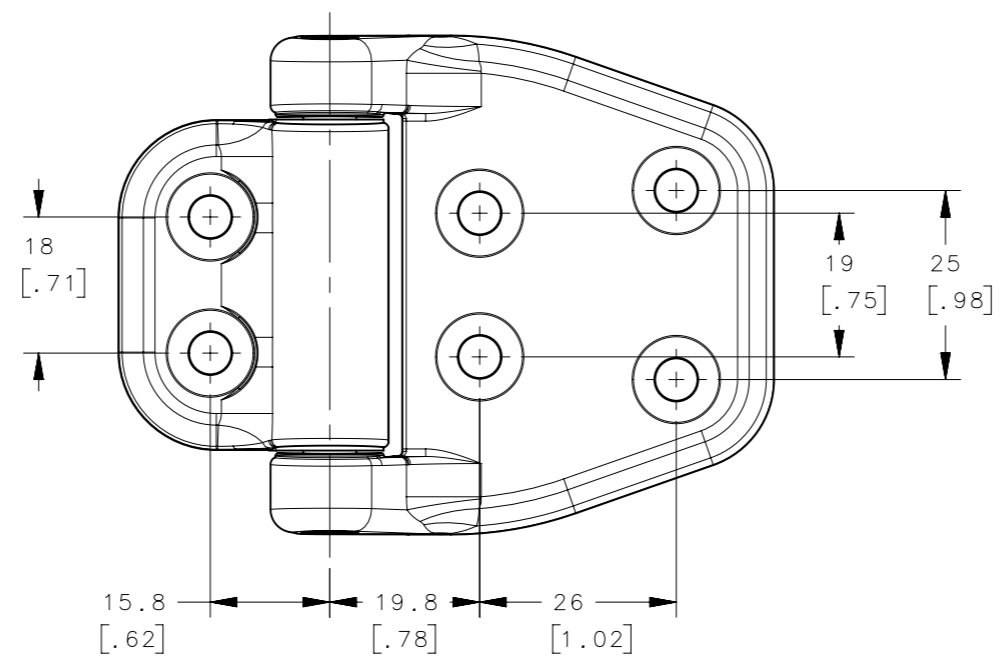
NOTES:

A. COSMETIC SPECIFICATION:  
 ALL EXTERNAL VISIBLE SURFACES WHEN FASTENED TO A PANEL CONFORM TO "CLASS C" DESIGNATION FOR POWDER COATING, ALL OTHER VISIBLE AND RECESS SURFACES ARE "CLASS D", PER SOUTHCO COSMETIC SPECIFICATION S-121, LATEST REVISION FOR POWDER COATING.

B. MATERIALS:  
 PART NUMBER: EH-8C-6V8-82 MATTE BLACK POWDER COATING PER S-93-280.  
 FIXED AND MOVABLE HINGE LEAF;  
 DIE CAST ALUMINUM, CHROMATE COATED, MATTE BLACK POWDER COATED  
 HINGE PIN; STAINLESS STEEL, PASSIVATED  
 LUBRICANT: SILICONE BASE

C. RECOMMENDED MOUNTING HARDWARE (CUSTOMER SUPPLIED):  
 M5X0.8 FLAT HEAD SCREWS  
 BOTTOM OF HINGE IS COUNTERBORED FOR USE OF MOST M5 RIVET STYLE (SELF CLINCHING) THREADED PANEL FASTENERS.

USE MOUNTING SCREW WITH MINIMUM TENSILE STRESS OF 517 MPa CLASS 5.8 (75 KSI GRADE 2) TO MEET LOADING OF HINGE IN APPLICATION. MAXIMUM TIGHTENING TORQUE: 2.27 N\*m (20.2 lbf\*in) DRY CONDITION. HIGHER TENSILE STRENGTH SCREWS CAN BE USED WITH TIGHTENING TORQUES NOT TO EXCEED 4 N\*m (35 lbf\*in).



PANEL PREPARATION

SOUTHCO PART NUMBER: EH-8C-6V8-82

CPB NUMBER 2019-0479	THIRD ANGLE PROJECTION		 CONNECT • CREATE • INNOVATE			
MASS 0.115 Kg./ Hinge	MILLIMETERS [IN]					
PROPRIETARY ITEM EXCEPT FOR USES EXPRESSLY GRANTED IN WRITING, INFORMATION DISCLOSED HEREON IS CONFIDENTIAL AND ALL RIGHTS, PATENT AND OTHERWISE, ARE RESERVED BY SOUTHCO, INC.	TOLERANCES UNLESS OTHERWISE NOTED	DESCRIPTION HINGE ASSEMBLY M5 FLAT HEAD SCREWS	SIZE A3	SYSTEM NX	DWG NO. J-EH-8C-6V8	
	ALL DIMENSIONS WITHOUT TOLERANCES ARE FOR REFERENCE ONLY.	PER ASME Y14.5M-1994	DRAWN BY GEA	DATE 21AUG2019	SCALE 1:1	SHEET 1 OF 1