

REVISION HISTORY			
REV	DATE	BY	DESCRIPTION
C	03JAN2020	JEM/LT	PRN: P2019-3088

- NOTES**
- A. MATERIAL AND FINISH**
- HOUSING, LEVER, KEEPER (BLACK FOR ALL VARIANTS), AND LOCKPLUG: DIECAST ZINC, POWDERCOATED
  - BUTTON: (BLACK FOR ALL VARIANTS)
    - NON LOCKING AND AUTO RELOCKING; POLYETHYLENE
    - KEY LOCKING; NYLON
  - SPRINGS: STAINLESS STEEL,
  - SCREW AND HEX NUT: LOW CARBON STEEL, ZINC ALLOY PLATE BRIGHT PLUS SEALER
  - BRACKET: 1010 STEEL, ZINC ALLOY PLATE BRIGHT PLUS SEALER
  - KEYS: BRASS, NICKEL PLATED
- B. PANEL PREPARATION ON SHEET 2**
- C. LOCK PLUG INSTALLATION:**
- POSITION LOCKPLUG AND ORIENT RETAINING WAFER (LAST WAFER LOCATED AT THE BOTTOM OF LOCK) AT THE 3 O'CLOCK POSITION AND INSERT INTO THE BUTTON.
  - ENSURE THE LOCK PLUG IS FULLY SEATED AGAINST THE BUTTON, THEN REMOVE KEY
- D. FOR LAYER PACKED, [P]=3, FULL BOX QUANTITY IS 40PCS / BOX**

C2-5 G - L F - P

**[G] GRIP\_RANGE**  
 2 STANDARD 1-18mm  
 3 EXTENDED 18-40mm

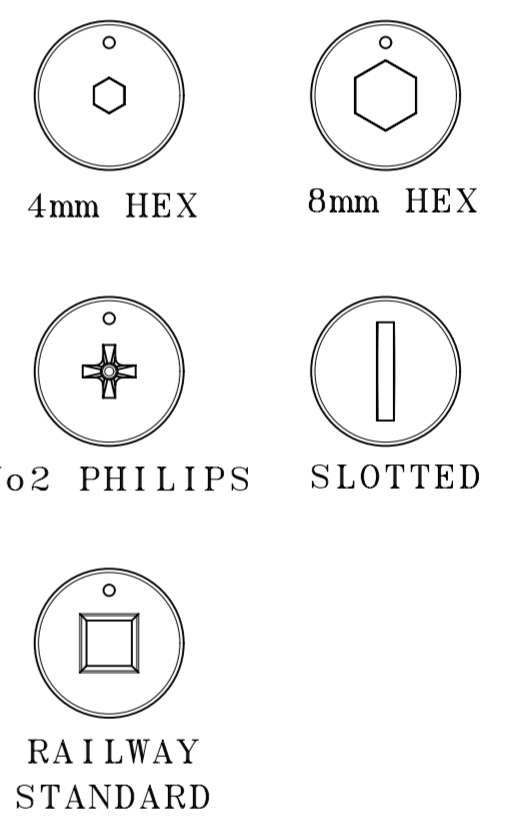
**[F] FINISH**  
 5 BLACK POWDERCOAT

**[P] PACKAGING**  
 3 LAYER PACKED  
 OMIT FOR INDIVIDUALLY PACKAGED

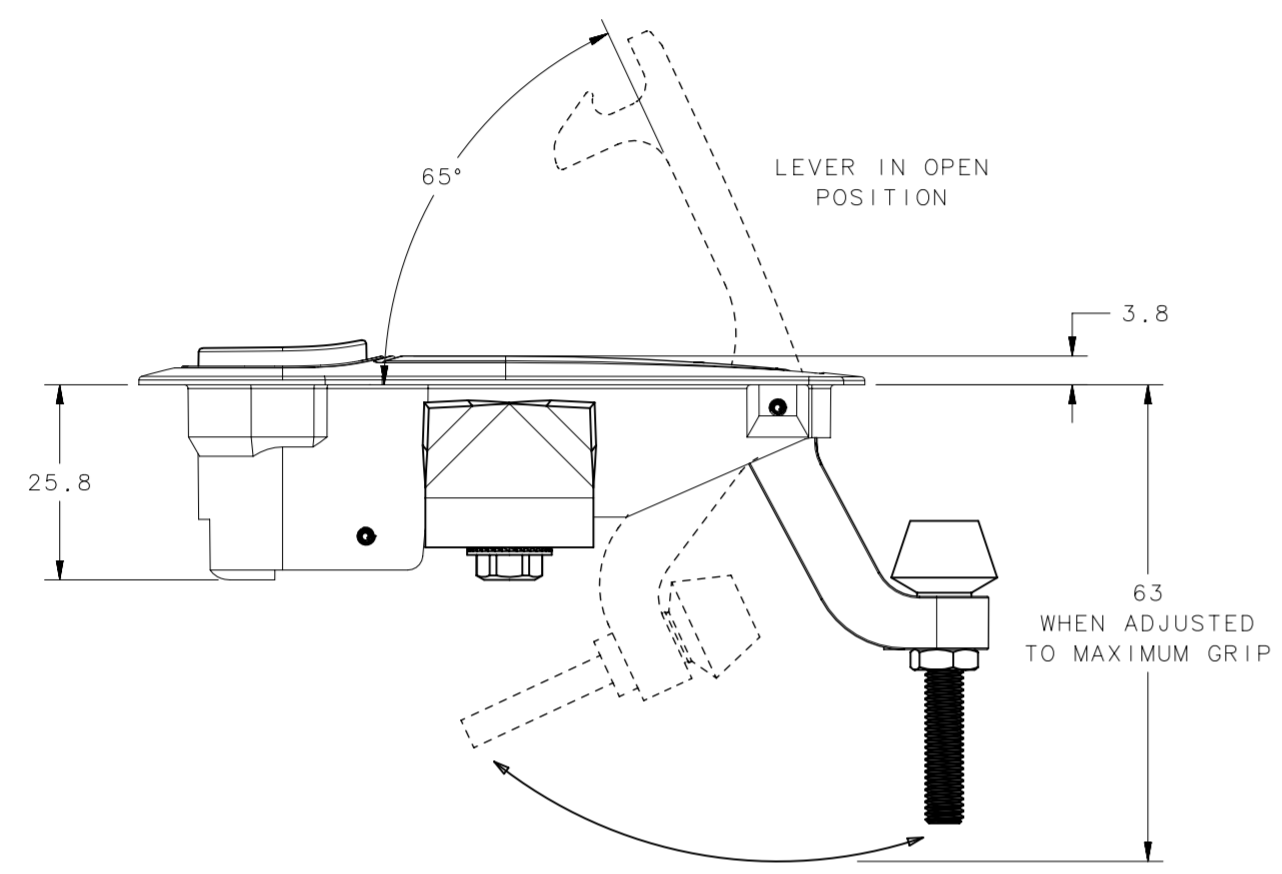
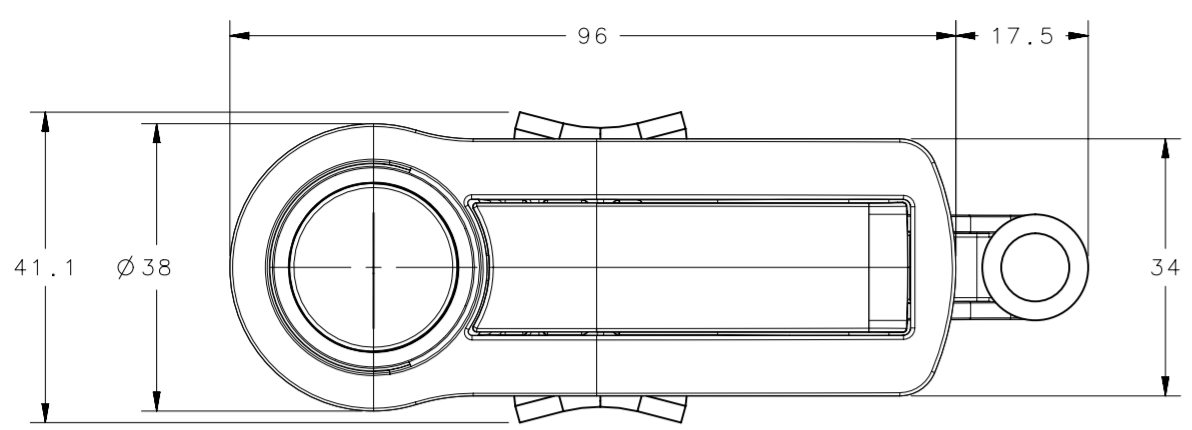
**[L] LOCK\_STYLE**

- NON LOCKING
- KEY LOCKING CH751
- KEY LOCKING CH751 (KEY RETAINED IN UNLOCKED POSITION)
- 4mm HEX RECESS
- No2 PHILIPS
- WITHOUT LOCKCORE
- RAILWAY STANDARD
- 8mm HEX RECESS
- SLOTTED RECESS
- AUTO RELOCK, 4mm HEX RECESS
- AUTO RELOCK, No2 PHILIPS
- AUTO RELOCK, RAILWAY STANDARD
- AUTO RELOCK, 8mm HEX RECESS
- AUTO RELOCK, SLOTTED RECESS

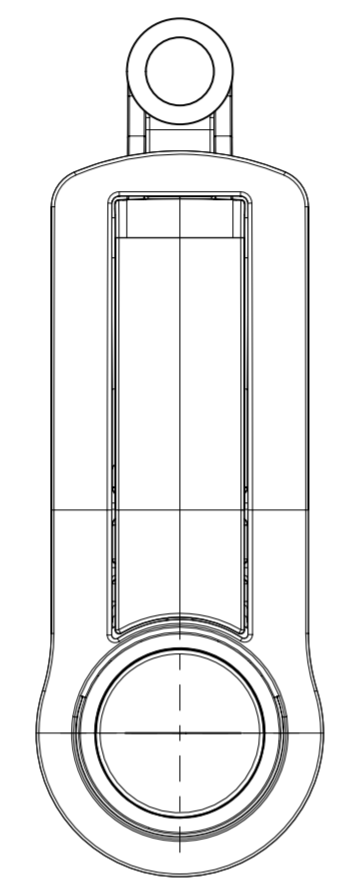
**TOOL DRIVER OPTIONS**



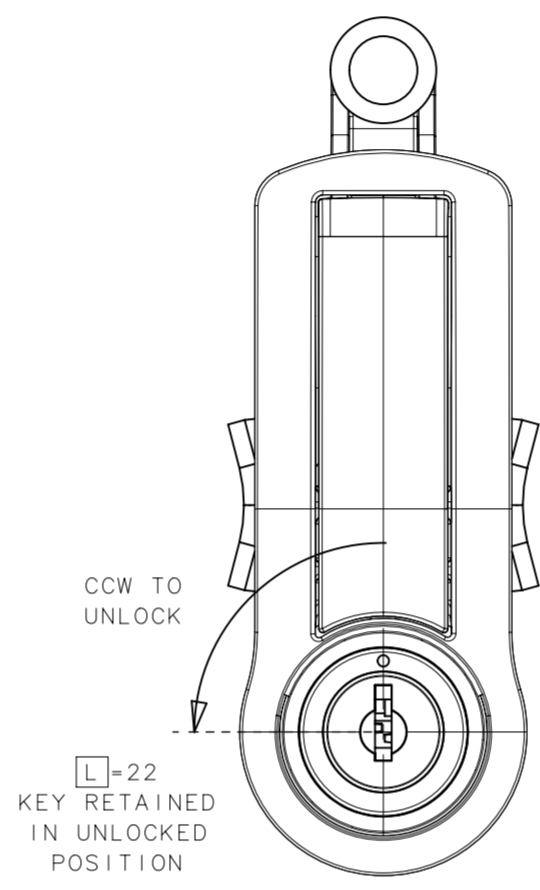
**KEY LOCKING**



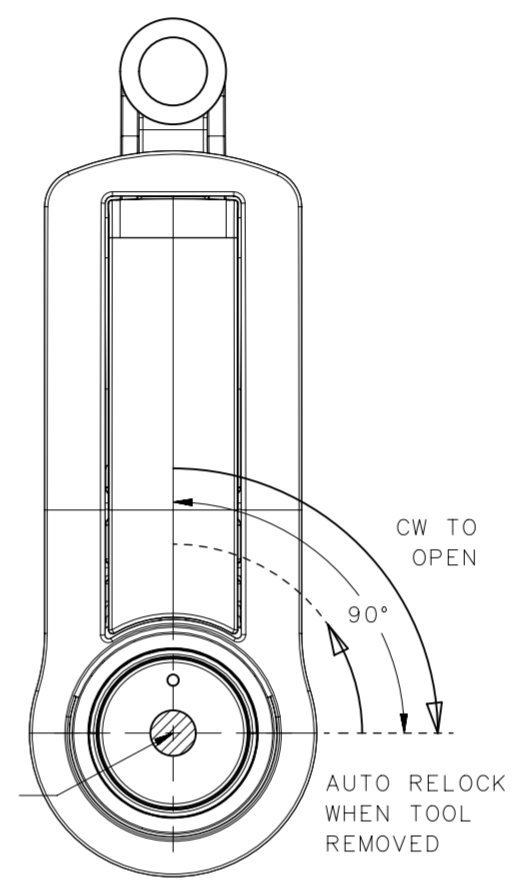
**STANDARD LEVER**  
NON LOCKING LATCH SHOWN



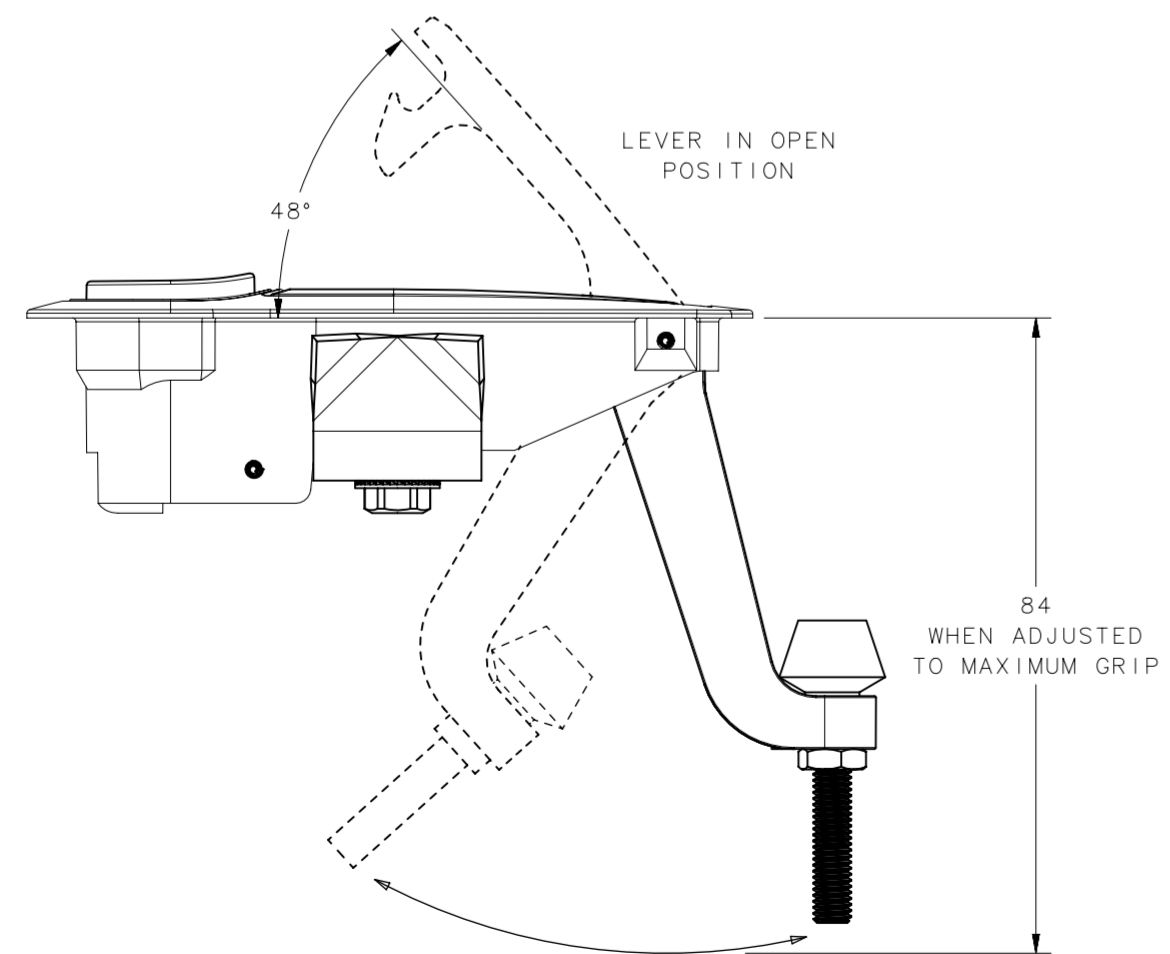
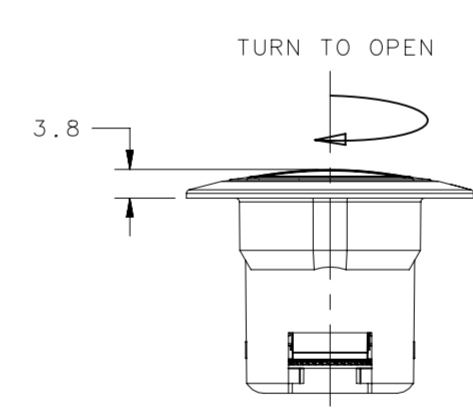
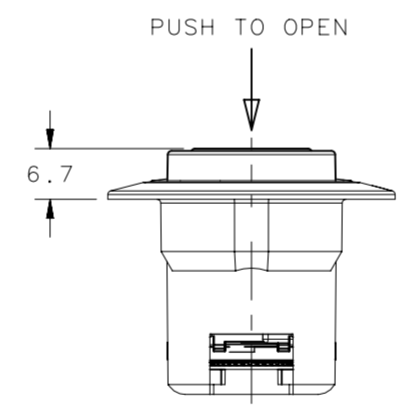
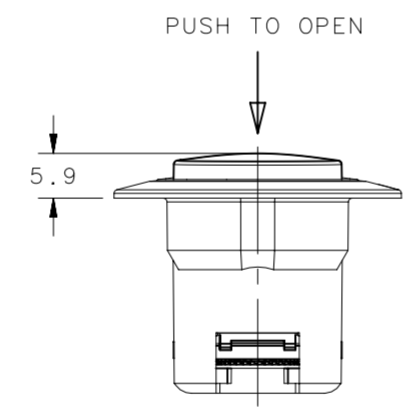
**NON LOCKING**



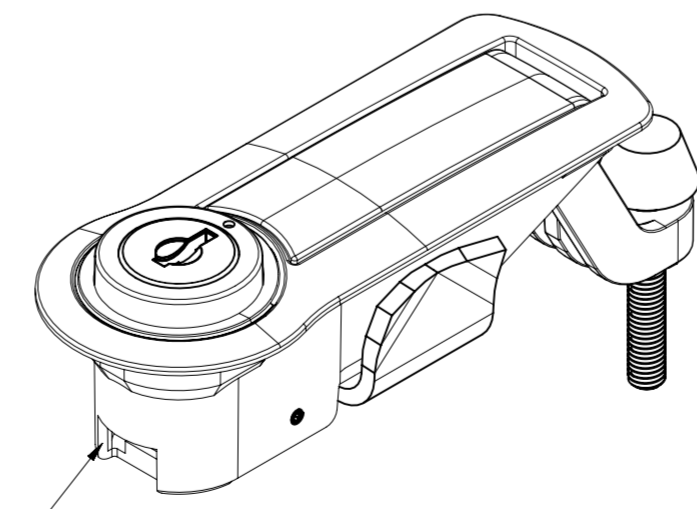
**LOCKING**  
KEY LOCKING OR TOOL ACCESS



**AUTO RELOCKING**  
TOOL ACCESS



**EXTENDED LEVER**  
NON LOCKING LATCH SHOWN



**ISO VIEW**  
LOCKING VERSION SHOWN  
SCALE 1:1

THIRD ANGLE PROJECTION		<b>southco</b> CONNECT · CREATE · INNOVATE	
MILLIMETERS [IN]			
TOLERANCES UNLESS OTHERWISE NOTED		DESCRIPTION	
UP TO 0.5	±0.1	C2 COMPRESSION LATCH	
OVER 0.5 UP TO 6	±0.2		
OVER 6 UP TO 30	±0.4		
OVER 30	±0.6		
ANGLES	±5°		
PROPRIETARY ITEM EXCEPT FOR USES EXPRESSLY GRANTED IN WRITING, INFORMATION DISCLOSED HEREON IS CONFIDENTIAL AND ALL RIGHTS, PATENT AND OTHERWISE, ARE RESERVED BY SOUTHCO, INC.		SIZE SYSTEM	DWG NO.
PER ASME Y14.5M-1994		A2 NX	J-C2-5
DRAWN BY		DATE	SCALE
JEM		15JUN2017	1:1
		SHEET	1 OF 2

8

7

6

5

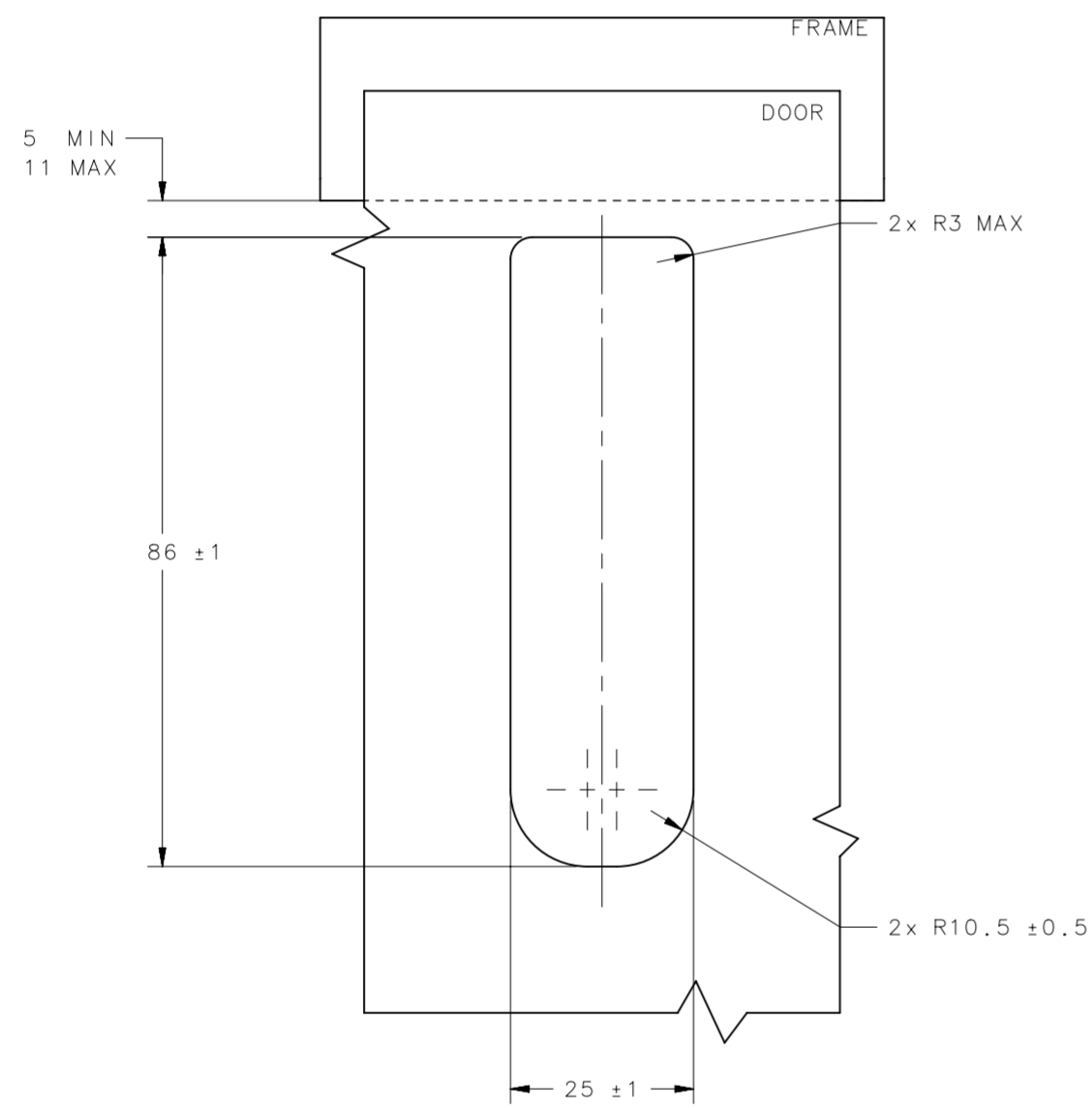
4

3

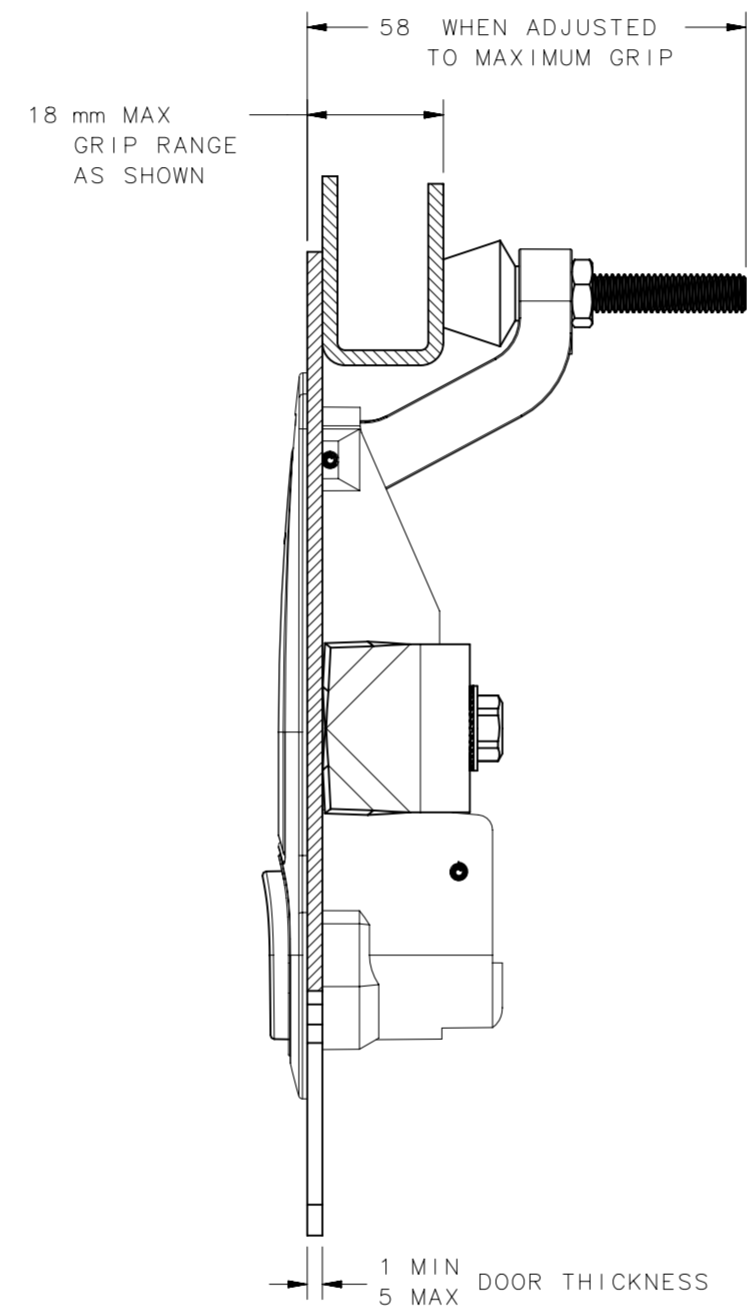
2

1

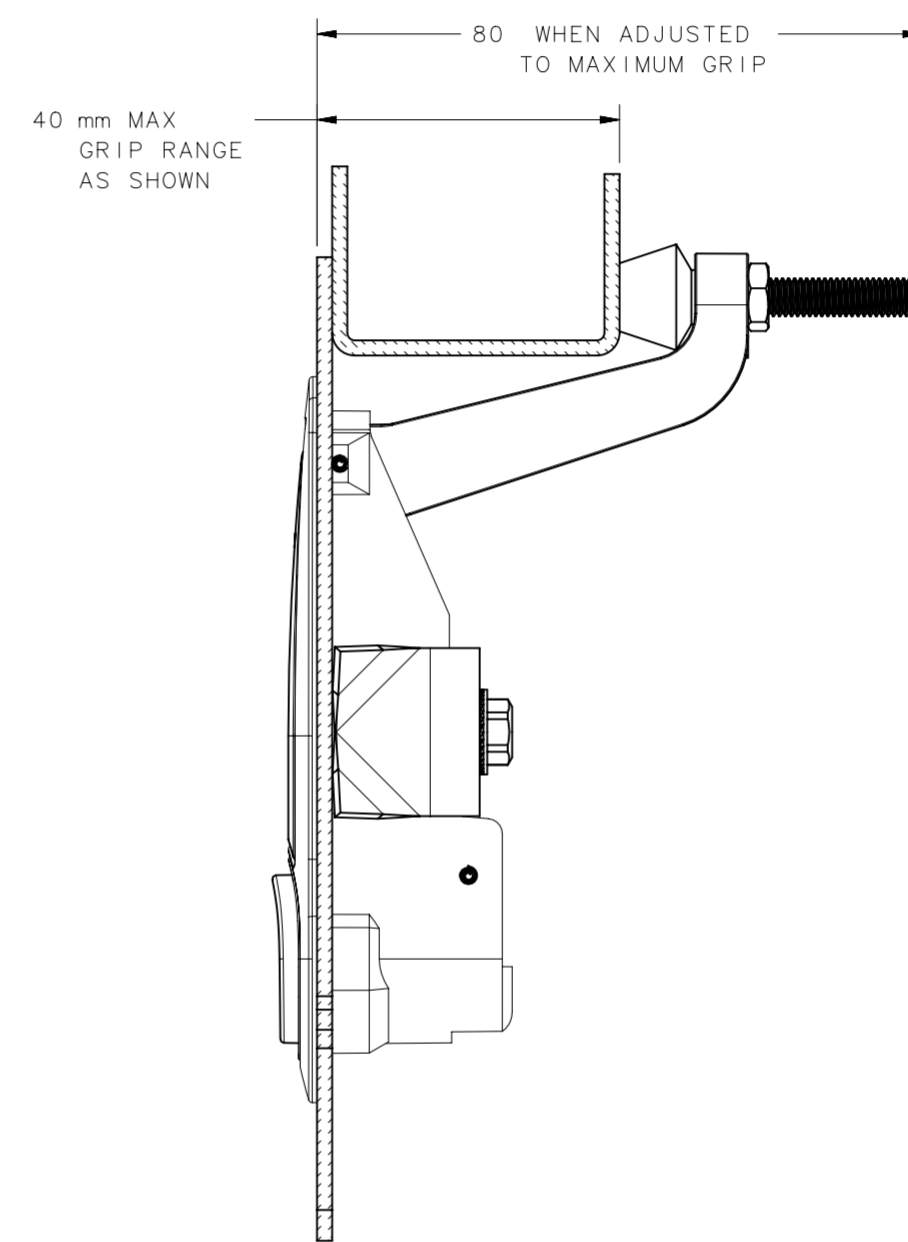
REVISION HISTORY			
REV	DATE	BY	DESCRIPTION
C	03JAN2020	JEM/LT	PRN: P2019-3088



PANEL PREPARATION



STANDARD GRIP



EXTENDED GRIP

THIRD ANGLE PROJECTION				<b>southco</b> CONNECT · CREATE · INNOVATE	
MILLIMETERS [IN]					
TOLERANCES UNLESS OTHERWISE NOTED				DESCRIPTION	
UP TO 0.5		± 0.1		C2 COMPRESSION LATCH	
OVER 0.5 UP TO 6		± 0.2			
OVER 6 UP TO 30		± 0.4			
OVER 30		± 0.6			
ANGLES		± 5°		SIZE SYSTEM DWG NO.	
PER ASME Y14.5M-1994		A2 NX		J-C2-5	
PROPRIETARY ITEM EXCEPT FOR USES EXPRESSLY GRANTED IN WRITING, INFORMATION DISCLOSED HEREON IS CONFIDENTIAL AND ALL RIGHTS, PATENT AND OTHERWISE, ARE RESERVED BY SOUTHCO, INC.		DRAWN BY JEM		DATE 15JUN2017	
		SCALE 1:1		SHEET 2 OF 2	

8

7

6

5

4

3

2

1