

REV	DATE	DRAWN/CHKD	DESCRIPTION	PART NUMBER	COMPONENT	QUANTITY	MATERIAL	FINISH
A	09JAN2001	LJC	PRN: N4-08	N4-1-303-X-5	ASSEMBLY	-----	-----	-----
B	10OCT2001	DLG	PRN: P2001-0567		HOUSING	1	DIE CAST ZINC	BLACK POWDER
C	18OCT2001	SKB	PRN: P2001-0589		CAP	1	DIE CAST ZINC	BLACK POWDER
D	09MAY2002	VNI	PRN: P2002-0258		RETAINER	1	302 STAINLESS STEEL	PASSIVATED
E	30MAY2003	AJT	PRN: P2003-0280		SPRING	1	302 STAINLESS STEEL	NATURAL
F	15SEPT2003	AJT	PRN: P2003-0757		O-RING	1	BUNA-N	NATURAL
G	07NOV2006	MDY/RLR	PRN: P2006-1558		SLEEVE	1	1075 STEEL	ZINC IMMERSION COATING
					CAM	1	1075 STEEL	ZINC IMMERSION COATING
					SHAFT	1	LOW CARBON STEEL	ZINC PLATE CHROMATE PLUS SEALER
					PIN	1	1008 STEEL	ZINC PLATE CHROMATE PLUS SEALER
					HANDLE	1	DIE CAST ZINC	BLACK POWDER
					DETENT RUBBER	1	BUNA-N	NATURAL
					DETENT PIN	1	304 STAINLESS STEEL	NATURAL
					GROOVE PIN	1	303 STAINLESS STEEL	NATURAL
					LOCKING DISC	1	STEEL	ZINC PLATE CHROMATE PLUS SEALER
					LOCK M10	2	LOW CARBON STEEL	ZINC PLATE CHROMATE PLUS SEALER
					LOCKWASHER ϕ 10	2	SPRING STEEL	BLACK PHOSPHATE
					NUT M22	1	DIE CAST ZINC	ACRYLIC LATEX SEALER
					TABWASHER	1	STEEL	ZINC PLATE CHROMATE PLUS SEALER
					CUP	1	STEEL	ZINC PLATE CHROMATE PLUS BLACK POWDER
				NUT M6	4	LOW CARBON STEEL	ZINC PLATE CHROMATE PLUS SEALER	
				LOCKWASHER ϕ 6	4	SPRING STEEL	ZINC PLATE CHROMATE PLUS SEALER	
				CURVED LOCK PAWL	1	1010 STEEL	ZINC PLATE CHROMATE PLUS SEALER	
				CH751 LOCKPLUG	1	DIE CAST ZINC	NICKEL PLATE & CLEAR PASSIVATE	
				PAWL	1	1010 STEEL	ZINC PLATE CHROMATE PLUS SEALER	

MILLIMETERS

ALL DIMENSIONS WITHOUT TOLERANCES ARE FOR REFERENCE ONLY.

THIRD ANGLE PROJECTION

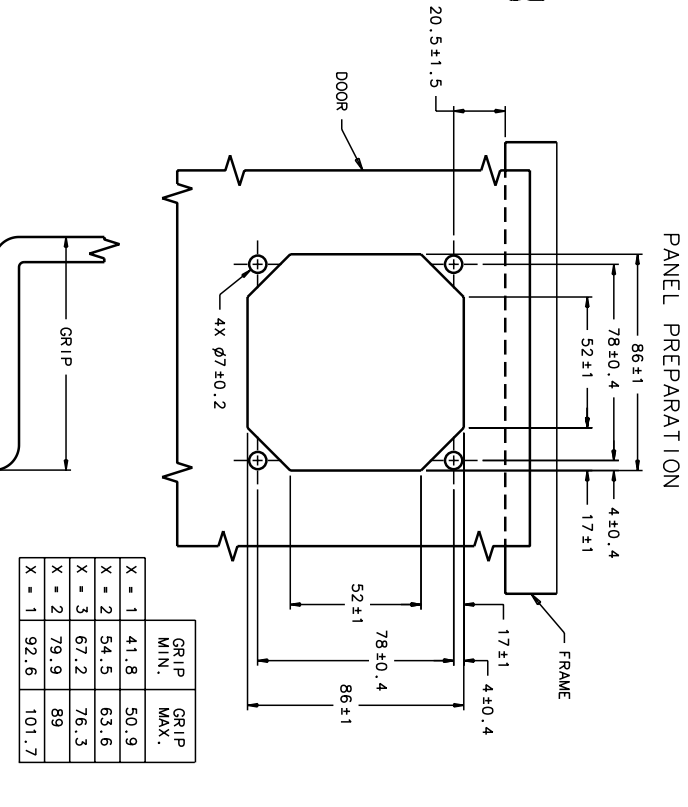
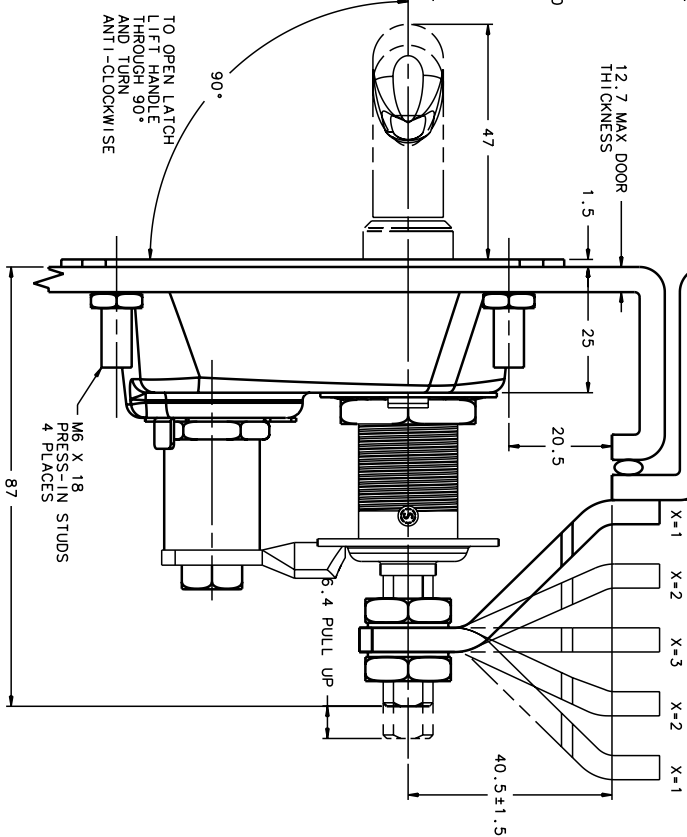
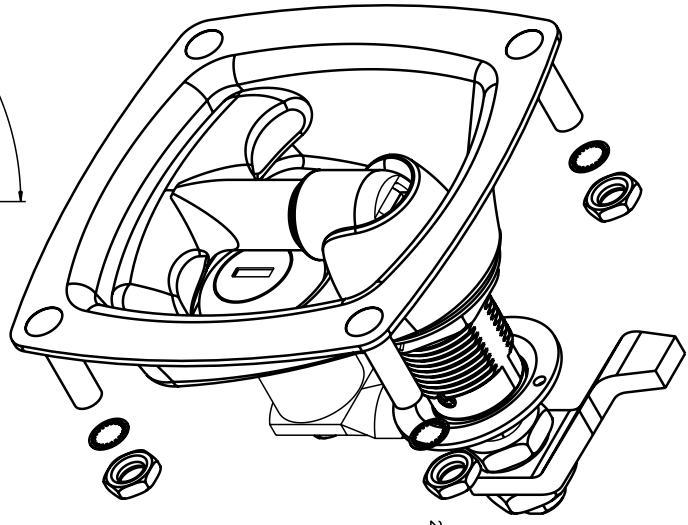
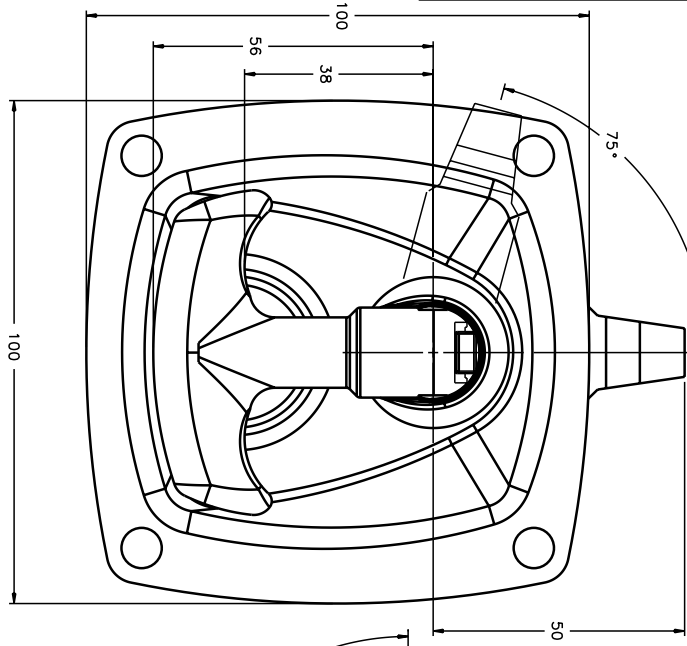
A3 PAPER SIZE

STANDARD PART NUMBER
N4-1-303-X-5

GRIP

MAXIMUM RECOMMENDED TIGHTENING TORQUE FOR M6 MOUNTING NUTS 12Nm.

MAXIMUM RECOMMENDED TIGHTENING TORQUE FOR PAWL LOCK NUTS 16Nm.



GRIP	MIN.	MAX.
X = 1	41.8	50.9
X = 2	54.5	63.6
X = 3	67.2	76.3
X = 2	79.9	89
X = 1	92.6	101.7

PANEL PREPARATION