

STAINLESS STEEL HANDLE ZL-2003



- Ultra-premium "Zwei L finish":
Using top-class polishing technology, the finish combines the elegance of Satin with the deep glow of Mirror.
- Can also be used on glass when used with the XL-2301 bracket. (optional part).
- Has sharper corners than the ZL-2001 and ZL-2002 handles.

[Remarks]

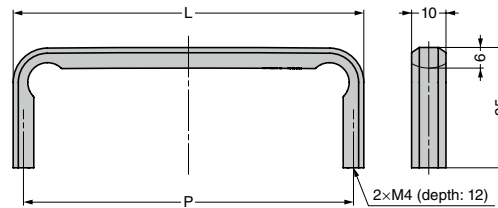
- When installing to thin sheet metal or acrylic sheet, mounting surface may not be horizontal and the sheet may warp. Please check with actual item.

[Parts Included]

- Truss head screw M4 x 30 (SUS)

[Optional Part]

- ZL-2301 bracket



RoHS	CAD	Item Code	Item Name	Material	Finish	L	P	Load Capacity N	Load Capacity kgf	Weight (g)
-	-	100-041-880	ZL-2003-32	Stainless Steel (SUS316)	Zwei L	38	32	150	15	33
-	-	100-041-881	ZL-2003-64			70	64			46
-	-	100-041-882	ZL-2003-96			102	96			59
-	-	100-041-883	ZL-2003-128			134	128			72
-	-	100-041-884	ZL-2003-160			166	160			86
-	-	100-041-885	ZL-2003-192			198	192			99
-	-	100-041-886	ZL-2003-256			262	256			125

STAINLESS STEEL HANDLE ZL-2004



- Ultra-premium "Zwei L finish":
Using top-class polishing technology, the finish combines the elegance of Satin with the deep glow of Mirror.
- Can also be used on glass when used with the XL-2301 bracket. (optional part).
- Has sharper corners than the ZL-2001 and ZL-2002 handles.

[Remarks]

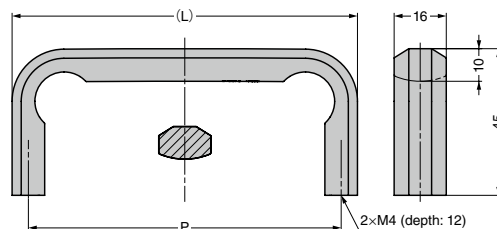
- When installing to thin sheet metal or acrylic sheet, mounting surface may not be horizontal and the sheet may warp. Please check with actual item.

[Parts Included]

- Truss head screw M4 x 30 (SUS)

[Optional Part]

- ZL-2301 bracket



RoHS	CAD	Item Code	Item Name	Material	Finish	L	P	Load Capacity N	Load Capacity kgf	Weight (g)
-	-	100-041-887	ZL-2004-96	Stainless Steel (SUS316)	Zwei L	106	96	250	25	172
-	-	100-041-888	ZL-2004-128			138	128			208
-	-	100-041-889	ZL-2004-160			170	160			244
-	-	100-041-890	ZL-2004-192			202	192			280
-	-	100-041-891	ZL-2004-256			266	256			351
-	-	100-041-892	ZL-2004-320			330	320			421
-	-	100-041-893	ZL-2004-416			426	416			526
-	-	100-041-894	ZL-2004-512			522	512			630